

APP CRS 214°	Rwy Idg 10000
	TDZE 5316
	Apt Elev 5355

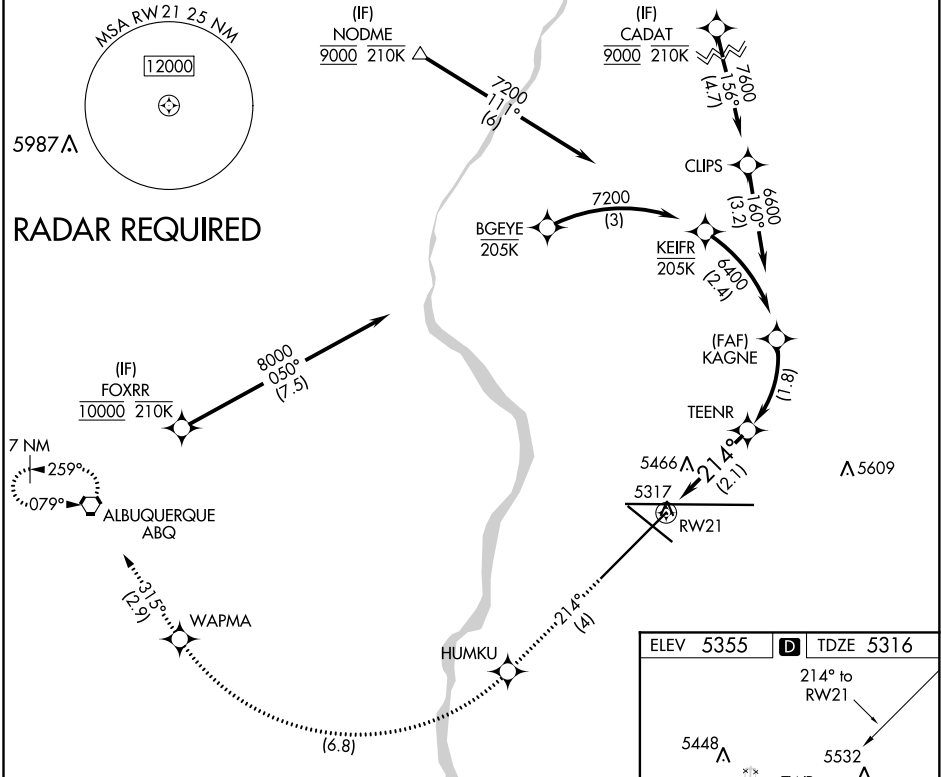
RNAV (RNP) Y RWY 21

ALBUQUERQUE INTL SUNPORT (ABQ)

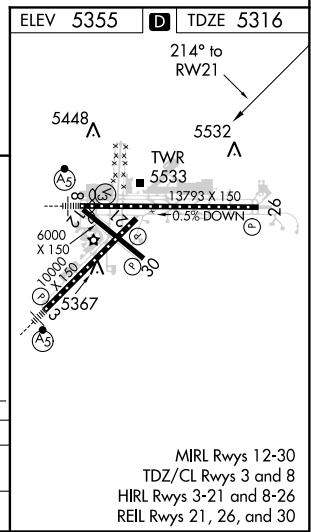
ASR For uncompensated Baro-VNAV systems, procedure NA below -12°C (11°F) or above 47°C (116°F). RF Required. GPS Required.

MISSED APPROACH: Climb to 8000 on track 214° to HUMKU, right turn to WAPMA, then on track 315° to ABQ VORTAC and hold.

D-ATIS 118.0 257.7	ALBUQUERQUE APP CON 123.9 354.1	ALBUQUERQUE TOWER 120.3 351.9	GND CON 121.9 348.6	CLNC DEL 119.2 259.3	CPDLC
------------------------------	-------------------------------------------	-----------------------------------------	-------------------------------	--------------------------------	-------



8000 tr 214°	HUMKU	WAPMA	tr 315°	ABQ	KAGNE 6600
See planview for multiple IF locations.			TEENR 6030	6600	
RW21		214°		VGS and RNAV glidepath not coincident.	
2.1 NM		1.8 NM		GP 3.00° TCH 55	



CATEGORY	A	B	C	D
RNP 0.30 DA	5758-1½		442 (500-1½)	

AUTHORIZATION REQUIRED

SW-1, 31 JAN 2019 to 28 FEB 2019

SW-1, 31 JAN 2019 to 28 FEB 2019