

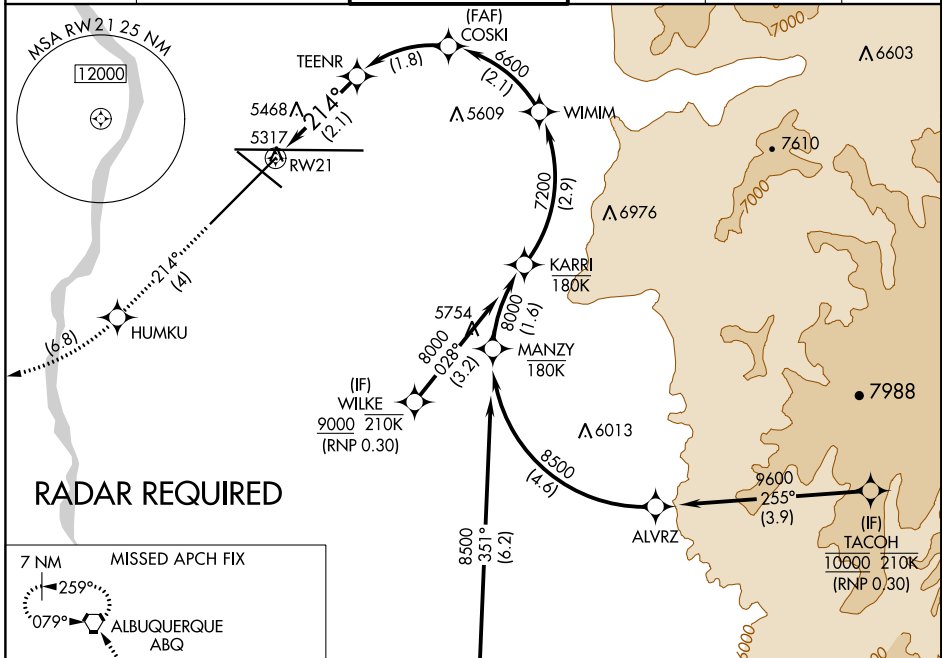
APP CRS 214°	Rwy Idg TDZE Apt Elev	10000 5316 5355
------------------------	-----------------------------	--

RNAV (RNP) Z RWY 21

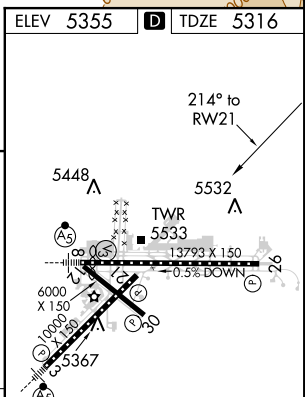
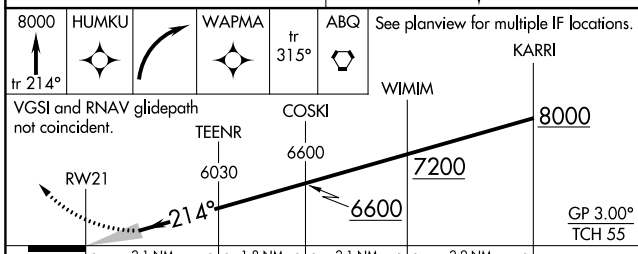
ALBUQUERQUE INTL SUNPORT (ABQ)

ASR	For uncompensated Baro-VNAV systems, procedure NA below -12°C (11°F) or above 47°C (116°F). RF required. GPS required.	MISSED APPROACH: Climb to 8000 on track 214° to HUMKU, right turn to WAPMA, then on track 315° to ABQ VORTAC and hold.

D-ATIS 118.0 257.7	ALBUQUERQUE APP CON 123.9 354.1	ALBUQUERQUE TOWER 120.3 351.9	GND CON 121.9 348.6	CLNC DEL 119.2 259.3	CPDLC
------------------------------	---	---	-------------------------------	--------------------------------	-------



ELEV 5355	D TDZE 5316
-----------	--------------------



CATEGORY	A	B	C	D
RNP 0.30 DA	5755-1½	439 (400-1½)		

AUTHORIZATION REQUIRED

MRL Rwy 12-30
 TDZ/CL Rwy 3 and 8
 HIRL Rwy 3-21 and 8-26
 REIL Rwy 21, 26, and 30

SW-1, 31 JAN 2019 to 28 FEB 2019

SW-1, 31 JAN 2019 to 28 FEB 2019