

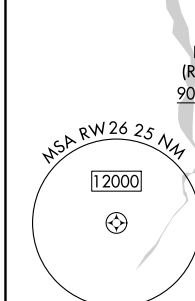
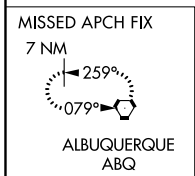
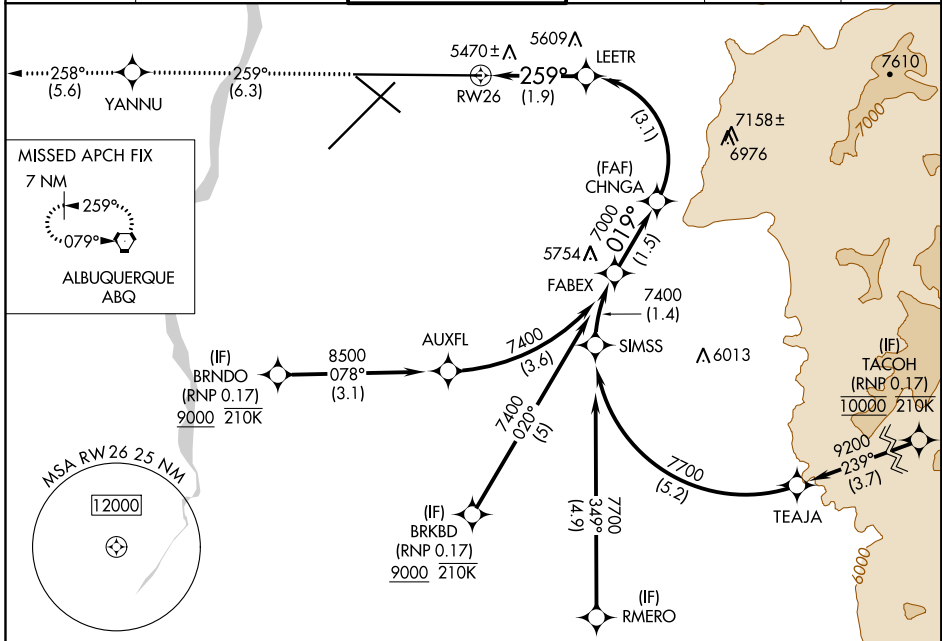
APP CRS	Rwy Idg	<b>13793</b>
<b>259°</b>	TDZE	<b>5355</b>
	Apt Elev	<b>5355</b>

# RNAV (RNP) Z RWY 26

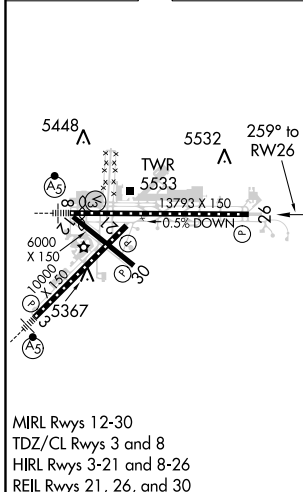
ALBUQUERQUE INTL SUNPORT (ABQ)

RNP AR APCH, RF required.		MISSED APPROACH: Climb to 8000 on track 259° to YANNU and on track 258° to ABQ VORTAC and hold.			
For uncompensated Baro-VNAV systems, procedure NA ASR below -13°C or above 48°C.					

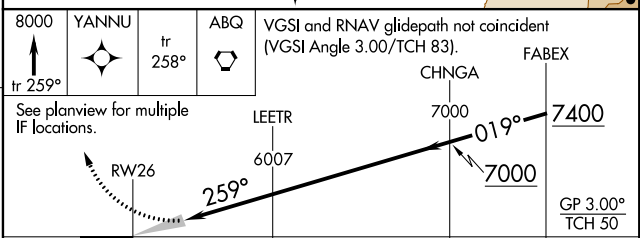
D-ATIS	ALBUQUERQUE APP CON	ALBUQUERQUE TOWER	GND CON	CLNC DEL	CPDLC
<b>118.0 257.7</b>	<b>123.9 354.1</b>	<b>120.3 351.9</b>	<b>121.9 348.6</b>	<b>119.2 259.3</b>	



ELEV 5355	<b>D</b>	TDZE 5355
-----------	----------	-----------



8000	YANNU	tr 258°	ABQ	VGSI and RNAV glidepath not coincident (VGSI Angle 3.00/TCH 83).
				FABEX



CATEGORY	A	B	C	D
RNP 0.17 DA	5745-1¼ 390 (400-1¼)			

**AUTHORIZATION REQUIRED**

SW-1, 31 JAN 2019 to 28 FEB 2019

SW-1, 31 JAN 2019 to 28 FEB 2019