

# RNAV (RNP) Z RWY 3 ALBUQUERQUE INTL SUNPORT (ABQ)

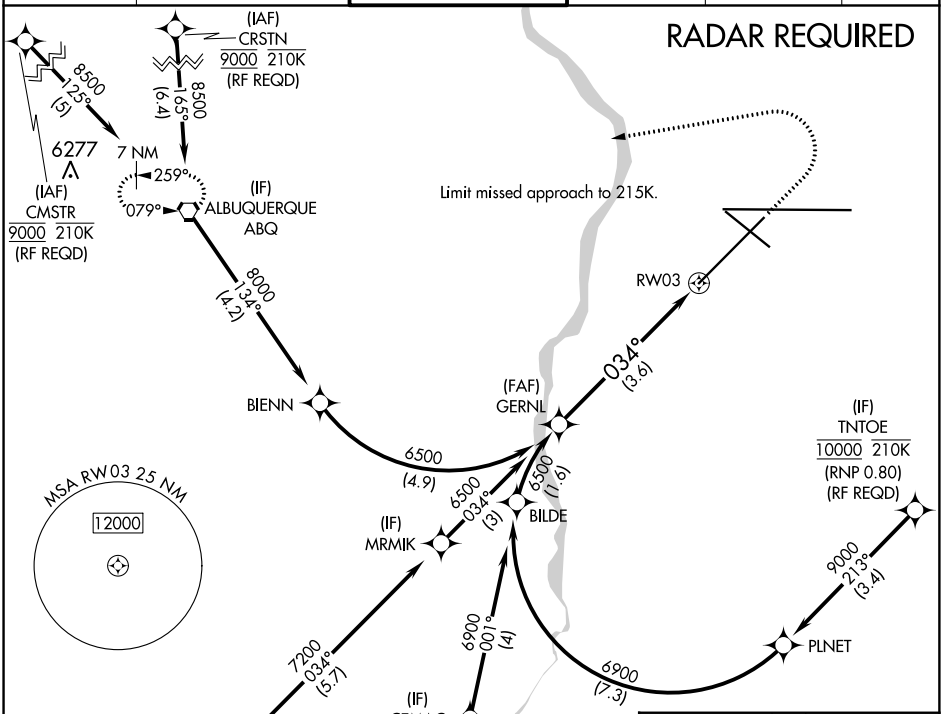
APP CRS <b>034°</b>	Rwy Idg <b>10000</b>
	TDZE <b>5312</b>
	Apt Elev <b>5355</b>

**ASR** For uncompensated Baro-VNAV systems, procedure NA below -12°C (11°F) or above 45°C (114°F). For inop MALSRS, increase RNP 0.30 all Cats visibility to RVR 4000. GPS required.

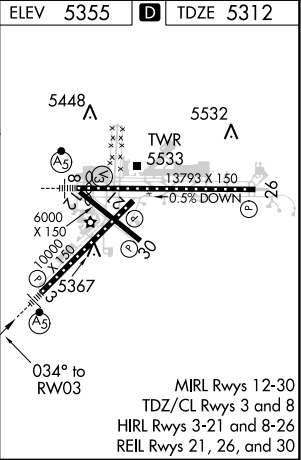
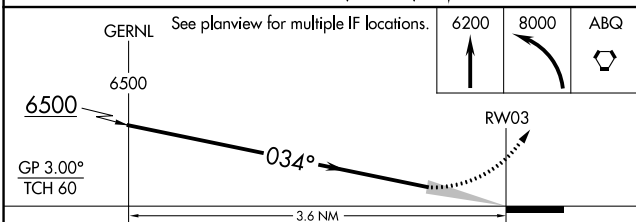


**MISSED APPROACH:** Climb to 6200 then climbing left turn to 8000 direct ABQ VORTAC and hold.

D-ATIS <b>118.0 257.7</b>	ALBUQUERQUE APP CON <b>123.9 354.1</b>	ALBUQUERQUE TOWER <b>120.3 351.9</b>	GND CON <b>121.9 348.6</b>	CLNC DEL <b>119.2 259.3</b>	CPDLC
------------------------------	---	---	-------------------------------	--------------------------------	-------



ELEV 5355	<b>D</b> TDZE 5312
-----------	--------------------



CATEGORY	A	B	C	D
RNP 0.30 DA	5571/24		259 (300-½)	

## AUTHORIZATION REQUIRED

SW-1, 31 JAN 2019 to 28 FEB 2019

SW-1, 31 JAN 2019 to 28 FEB 2019