

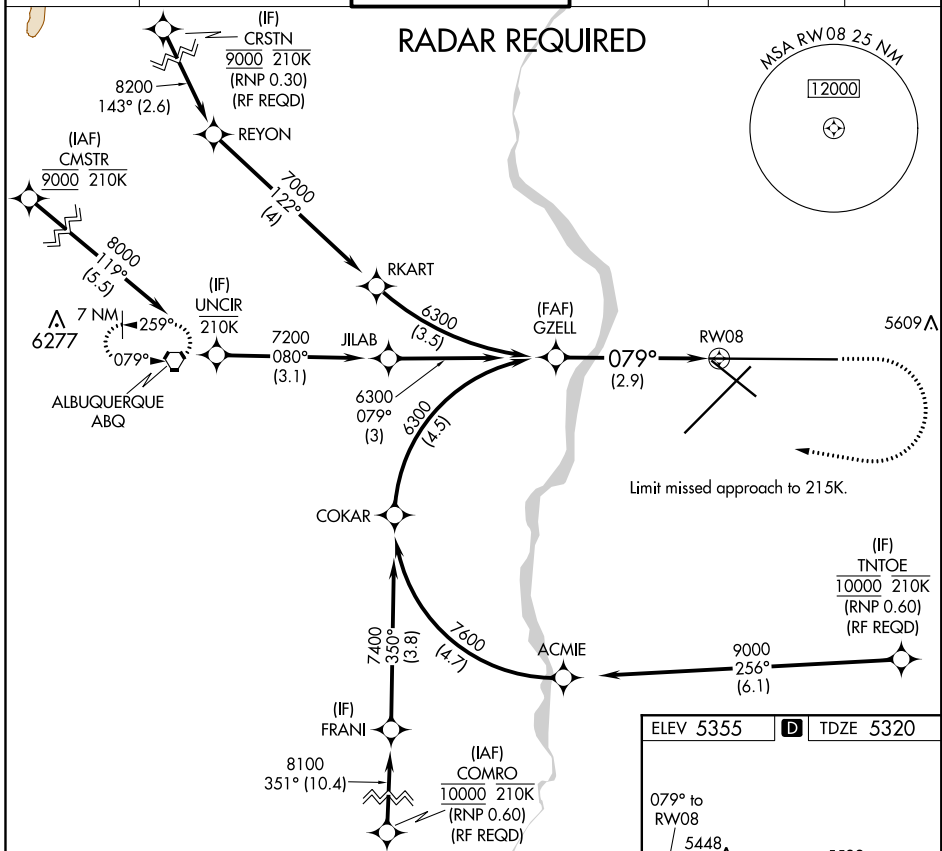
APP CRS <b>079°</b>	Rwy Idg <b>12793</b> TDZE <b>5320</b> Apt Elev <b>5355</b>
------------------------	--

# RNAV (RNP) Z RWY 8

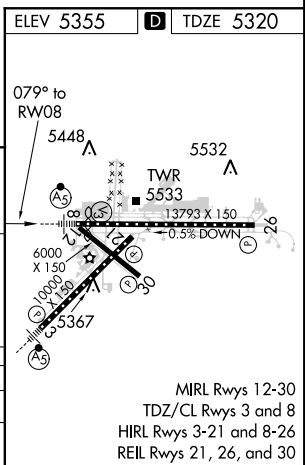
ALBUQUERQUE INTL SUNPORT (ABQ)

<p><b>ASR</b> For uncompensated Baro-VNAV systems, procedure NA below -12°C (11°F) or above 47°C (117°F). For inop MALSR, increase RNP 0.30 all Cats visibility to RVR 4700. GPS required.</p>	<p><b>MALSR</b></p>	<p><b>MISSED APPROACH:</b> Climb to 5900 then climbing right turn to 8000 direct ABQ VORTAC and hold.</p>
--	---------------------	---

D-ATIS <b>118.0 257.7</b>	ALBUQUERQUE APP CON <b>123.9 354.1</b>	ALBUQUERQUE TOWER <b>120.3 351.9</b>	GND CON <b>121.9 348.6</b>	CLNC DEL <b>119.2 259.3</b>	CPDLC
------------------------------	---	---	-------------------------------	--------------------------------	-------



GZELL	VGSI and RNAV glidepath not coincident (VGSI Angle 2.95/TCH 55).	5900	8000	ABQ
6300		↑	↷	⬡
GP 3.00°	See planview for multiple IF locations.			
TCH 54				
CATEGORY	A	B	C	D
RNP 0.30 DA	5619/24 299 (300-1/2)			
<b>AUTHORIZATION REQUIRED</b>				



SW-1, 31 JAN 2019 to 28 FEB 2019

SW-1, 31 JAN 2019 to 28 FEB 2019