

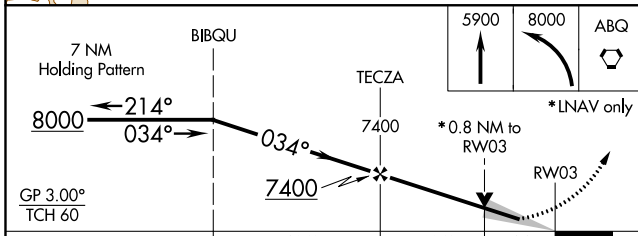
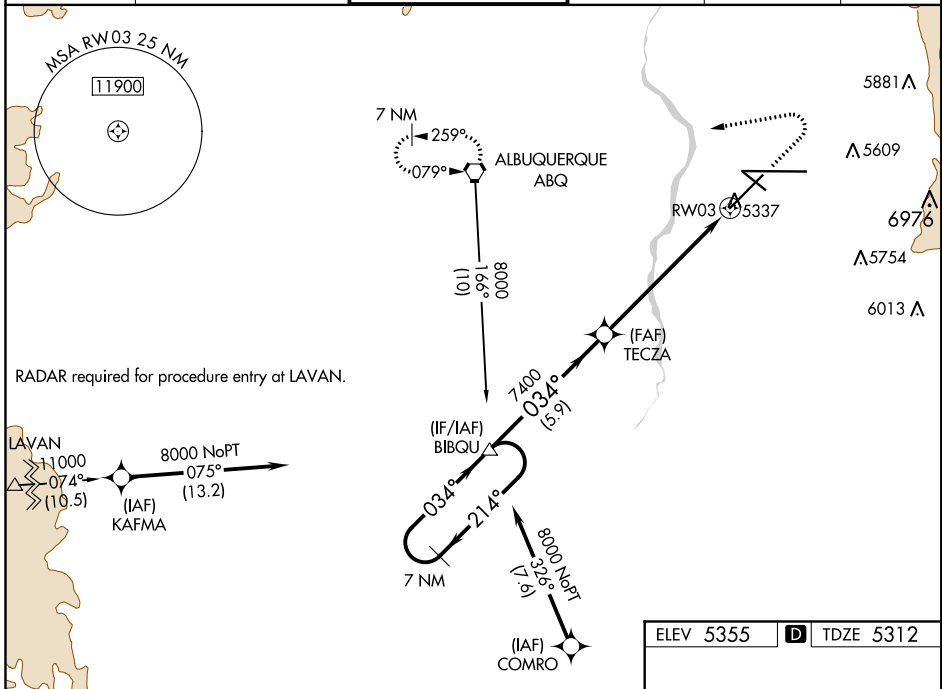
WAAS CH 78137 W03A	APP CRS 034°	Rwy Idg TDZE Apt Elev	10000 5312 5355
--	------------------------	-----------------------------	--

RNAV (GPS) Y RWY 3

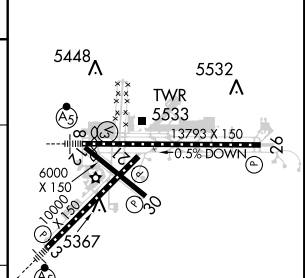
ALBUQUERQUE INTL SUNPORT (ABQ)

	MALSR 		MISSED APPROACH: Climb to 5900 then climbing left turn to 8000 direct ABQ VORTAC and hold, continue climb-in-hold to 8000.		
	D-ATIS 118.0 257.7	ALBUQUERQUE APP CON 123.9 354.1	ALBUQUERQUE TOWER 120.3 351.9	GND CON 121.9 348.6	CLNC DEL 119.2 259.3

D-ATIS 118.0 257.7	ALBUQUERQUE APP CON 123.9 354.1	ALBUQUERQUE TOWER 120.3 351.9	GND CON 121.9 348.6	CLNC DEL 119.2 259.3	CPDLC
------------------------------	---	---	-------------------------------	--------------------------------	-------



ELEV 5355	D	TDZE 5312
-----------	----------	-----------



CATEGORY	A	B	C	D
LPV DA		5512/24	200 (200-½)	
LNAV/VNAV DA		5562/24	250 (300-½)	
LNAV MDA		5620/24	308 (300-½)	
C CIRCLING	5840-1 485 (500-1)	5920-1 565 (600-1)	5940-1½ 585 (600-1½)	6460-3 1105 (1200-3)

MIRL Rwy 12-30
TDZ/CL Rwy 3 and 8
HIRL Rwy 3-21 and 8-26
REIL Rwy 21, 26, and 30

SW-1, 31 JAN 2019 to 28 FEB 2019

SW-1, 31 JAN 2019 to 28 FEB 2019