

# HI-VOR/DME or TACAN RWY 4

VORTAC PNH  
**116.6**  
 Chan **113**

APCH CRS  
**037°**

Rwy Idg **13,502**  
 TDZE **3607**  
 Arprt Elev **3607**

JAL-19 [USAF]

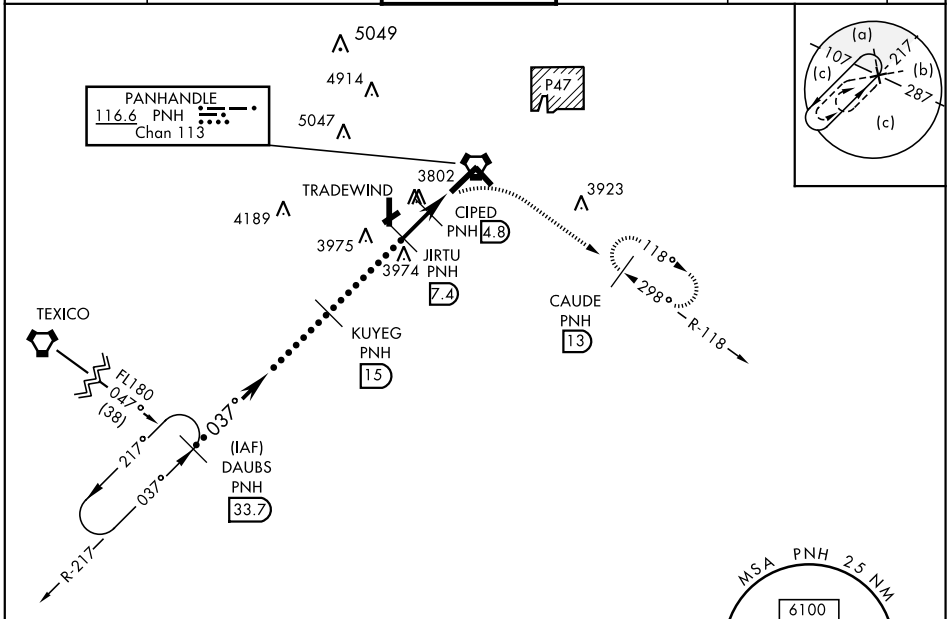
RICK HUSBAND AMARILLO INTL (KAMA)

▲ For inop ALS, increase CAT D vis to 1¼ miles, CAT E vis to 1½ miles.  
 ▲▲ For inop ALS, increase CAT D vis to 1½ miles, CAT E vis to 2 miles.



MISSED APPROACH: Climbing right turn to 5000 via heading 090° and PNH VORTAC R-118 to CAUDE INT/PNH 13 DME and hold.

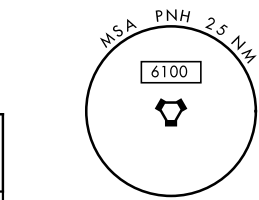
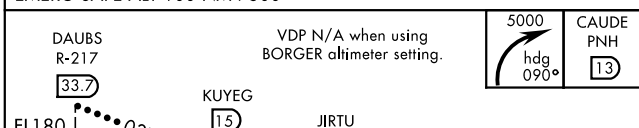
ATIS <b>118.85 350.3</b>	AMARILLO APP CON <b>119.5 307.0</b>	AMARILLO TOWER ★ <b>118.3 257.9</b>	GND CON <b>121.9 348.6</b>	CLNC DEL <b>121.65 239.275</b>	ASR
-----------------------------	--	--	-------------------------------	-----------------------------------	-----



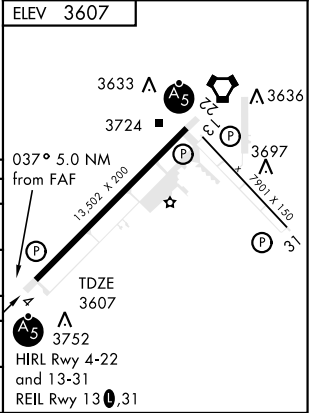
SC-2, 31 JAN 2019 to 28 FEB 2019

SC-2, 31 JAN 2019 to 28 FEB 2019

EMERG SAFE ALT 100 NM 7500



CATEGORY	C	D	E
S-4 *	4020/40 413 (500-¾)	4020/50 413 (500-1)	
CIRCLING	4080-1½ 473 (500-1½)	4240-2 633 (700-2)	4460-3 853 (900-3)
BORGER ALTIMETER SETTING			
S-4 **	4180/50 573 (600-1)	4180/60 573 (600-1¼)	4180-1½ 573 (600-1½)
CIRCLING	4240-1¾ 633 (700-1¾)	4400-2½ 793 (800-2½)	4620-3 1013 (1100-3)



# HI-VOR/DME or TACAN RWY 4