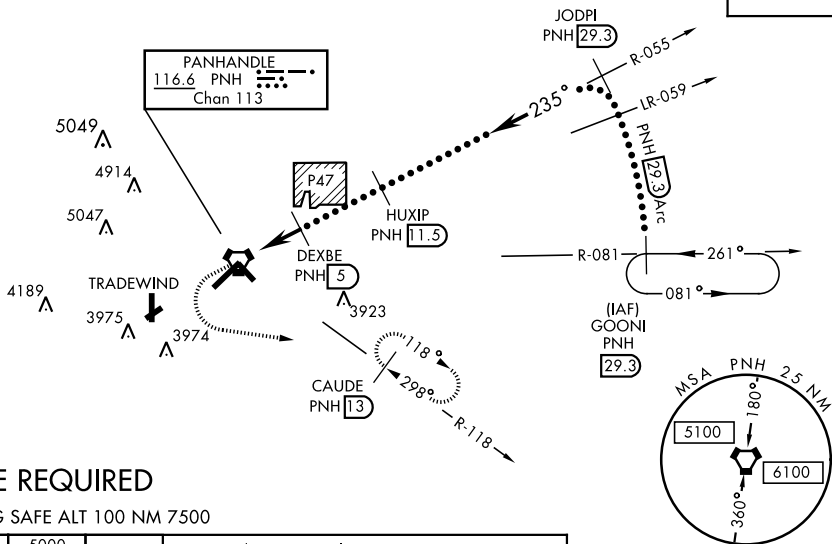
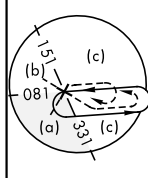


# HI-VOR or TACAN RWY 22

<b>VORTAC PNH</b> <b>116.6</b> Chan <b>113</b>	<b>APCH CRS</b> <b>235°</b>	Rwy Idg <b>13,502</b> TDZE <b>3606</b> Arprt Elev <b>3607</b>	JAL-19 [USAF]	RICK HUSBAND AMARILLO INTL (KAMA)
* When ALS inop, increase CAT CDE vis to 1½ mile. ** When ALS inop, increase CAT CDE vis to 1¾ mile. ALT MINS N/A when local altimeter not available.			<b>MALSR</b>	MISSED APPROACH: Climb to 4100 then climbing left turn to 5000 on heading 090° and PNH VOTRAC R-118 to CAUDE INT/PNH 13 DME and hold.

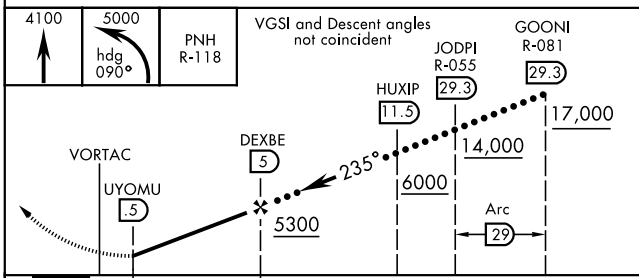
ATIS <b>118.85 350.3</b>	AMARILLO APP CON <b>119.5 307.0</b>	AMARILLO TOWER * <b>118.3 257.9</b>	GND CON <b>121.9 348.6</b>	CLNC DEL <b>121.65 239.275</b>	ASR
-----------------------------	--	--	-------------------------------	-----------------------------------	-----

When local altimeter setting not received, use Borger altimeter setting.

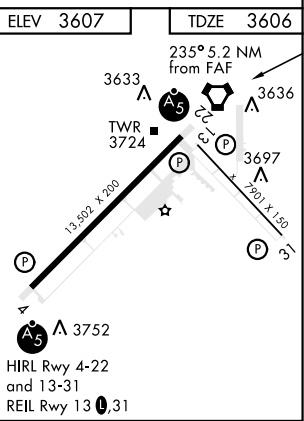


## DME REQUIRED

EMERG SAFE ALT 100 NM 7500



	4100	5000							
	↑	hdg 090°	PNH R-118	VGSI and Descent angles not coincident					
				HUXIP 11.5	JODPI R-055 29.3	GOONI R-081 29.3			
CATEGORY	C	D	E						
S-22 *	4000-5/8 394 (400-5/8)								
CIRCLING	4240-1¾ 633 (700-1¾)	4280-2¼ 673 (700-2¼)	4460-3 853 (900-3)						
BORGER ALTIMETER SETTING									
S-22 **	4160-1½ 554 (600-1½)								
CIRCLING	4400-2¼ 793 (800-2¼)	4420-2¾ 813 (900-2¾)	4620-3 1013 (1100-3)						



# HI-VOR or TACAN RWY 22

SC-2, 31 JAN 2019 to 28 FEB 2019

SC-2, 31 JAN 2019 to 28 FEB 2019