

LOC I-RQ 111.1	APP CRS 214°	Rwy Idg 13502 TDZE 3606 Apt Elev 3607
--------------------------	------------------------	--

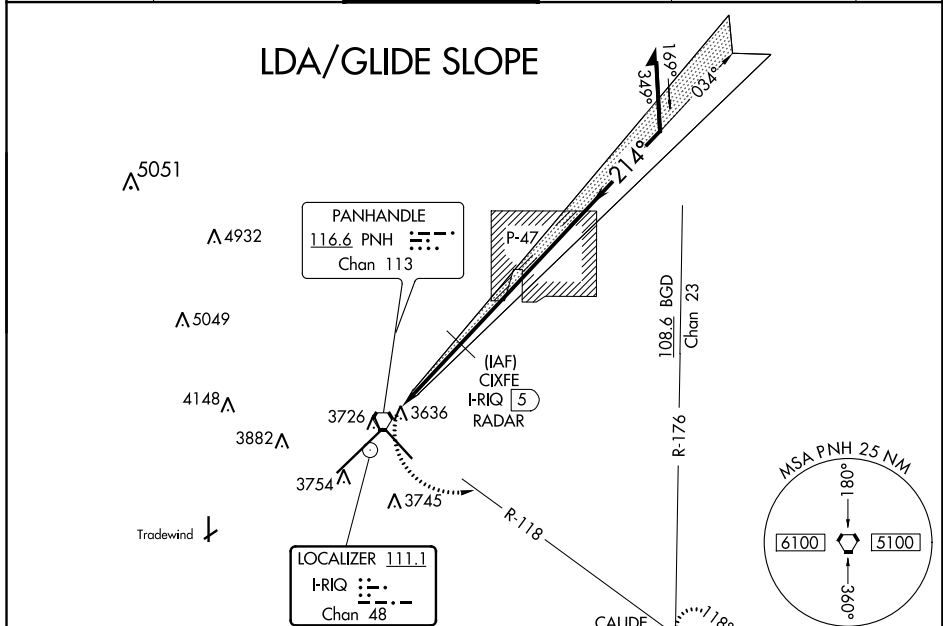
LDA/DME RWY 22
RICK HUSBAND AMARILLO INTL (AMA)

RADAR required for procedure entry.

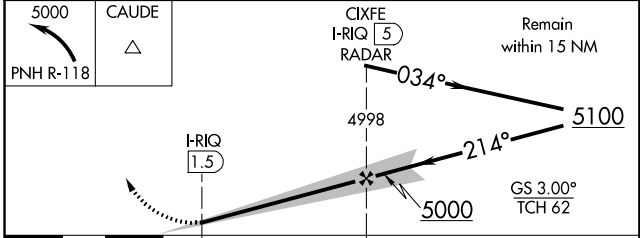
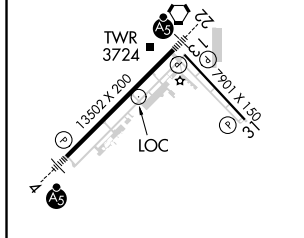
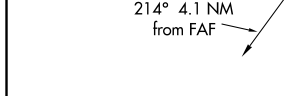
Final approach course offset 4.45 degrees intersects the runway centerline 2509' from Rwy 22. For inop ALS, increase LDA/GS-22 all Cats visibility to ¾ SM, ASR increase LDA-22 Cat C/D/E visibility to ¾ SM.

MALSRS MISSED APPROACH: Climbing left turn to 5000 via PNH VORTAC R-118 to CAUDE INT and hold.

ATIS 118.85 350.3	AMARILLO APP CON* 119.5 307.0	AMARILLO TOWER* 118.3(CTAF) 257.9	GND CON 121.9 348.6	CLNC DEL 121.65 239.275	UNICOM 122.95
-----------------------------	---	---	-------------------------------	-----------------------------------	-------------------------



ELEV 3607	D TDZE 3606
-----------	--------------------



CATEGORY	A	B	C	D	E
LDA/GS-22	3856-½ 250 (300-½)				
LDA-22	3900-½	294 (300-½)	3900-¾ 294 (300-¾)		
CIRCLING	4080-1	473 (500-1)	4080-1½ 473 (500-1½)	4240-2 633 (700-2)	4460-3 853 (900-3)

REIL Rwy 13
REIL Rwy 31
HIRL Rws 4-22 and 13-31

SC-2, 31 JAN 2019 to 28 FEB 2019

SC-2, 31 JAN 2019 to 28 FEB 2019