

APP CRS	Rwy Idg	<b>7901</b>
<b>129°</b>	TDZE	<b>3603</b>
	Apt Elev	<b>3607</b>

# RNAV (RNP) Z RWY 13

RICK HUSBAND AMARILLO INTL (AMA)

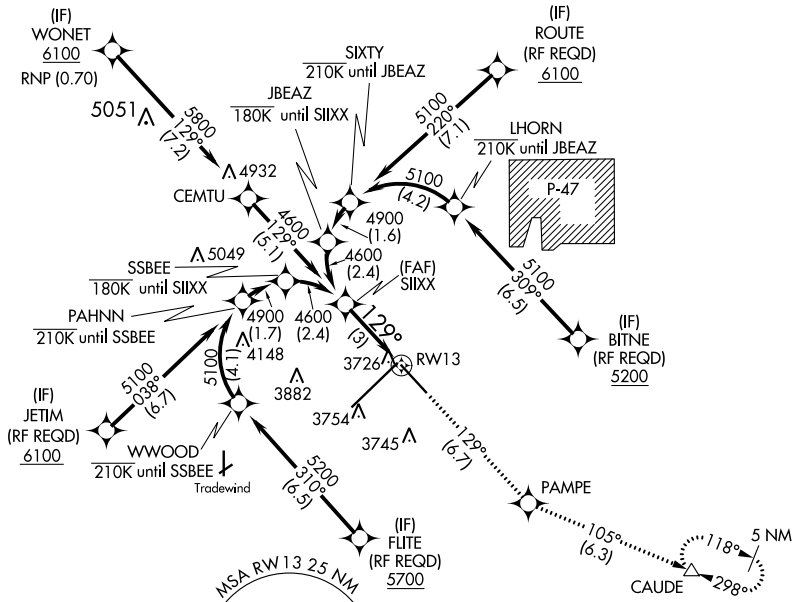
**ASR** For uncompensated Baro-VNAV systems, procedure NA below -14°C (7°F) or above 51°C (124°F). GPS required.

**MISSED APPROACH:** Climb to 5400 on track 129° to PAMPE and track 105° to CAUDE and hold.

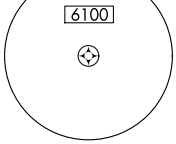
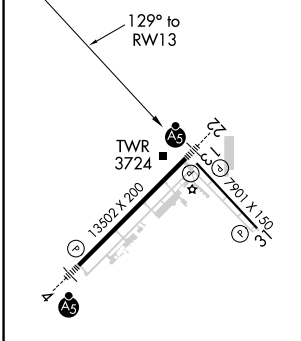
ATIS	AMARILLO APP CON*	AMARILLO TOWER*	GND CON	CLNC DEL	UNICOM
<b>118.85 350.3</b>	<b>119.5 307.0</b>	<b>118.3(CTAF) 257.9</b>	<b>121.9 348.6</b>	<b>121.65 239.275</b>	<b>122.95</b>

SC-2, 31 JAN 2019 to 28 FEB 2019

SC-2, 31 JAN 2019 to 28 FEB 2019



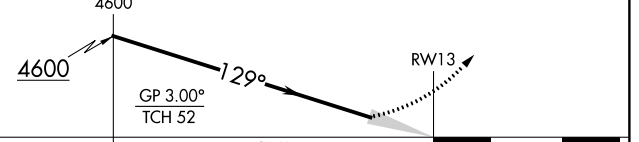
ELEV	<b>3607</b>	<b>D</b>	TDZE	<b>3603</b>
------	-------------	----------	------	-------------



## RNAV 1 - GPS or RADAR REQUIRED

See planview for multiple IF locations.

5400	PAMPE	CAUDE
↑	✧	△
tr 129°	tr 105°	



CATEGORY	A	B	C	D
RNP 0.30 DA		3976-1¼	373 (400-1¼)	

REIL Rwy 13 **1**  
 REIL Rwy 31  
 HIRL Rwy 4-22 and 13-31

## AUTHORIZATION REQUIRED