

APP CRS <b>309°</b>	Rwy Idg <b>7901</b>
	TDZE <b>3601</b>
	Apt Elev <b>3607</b>

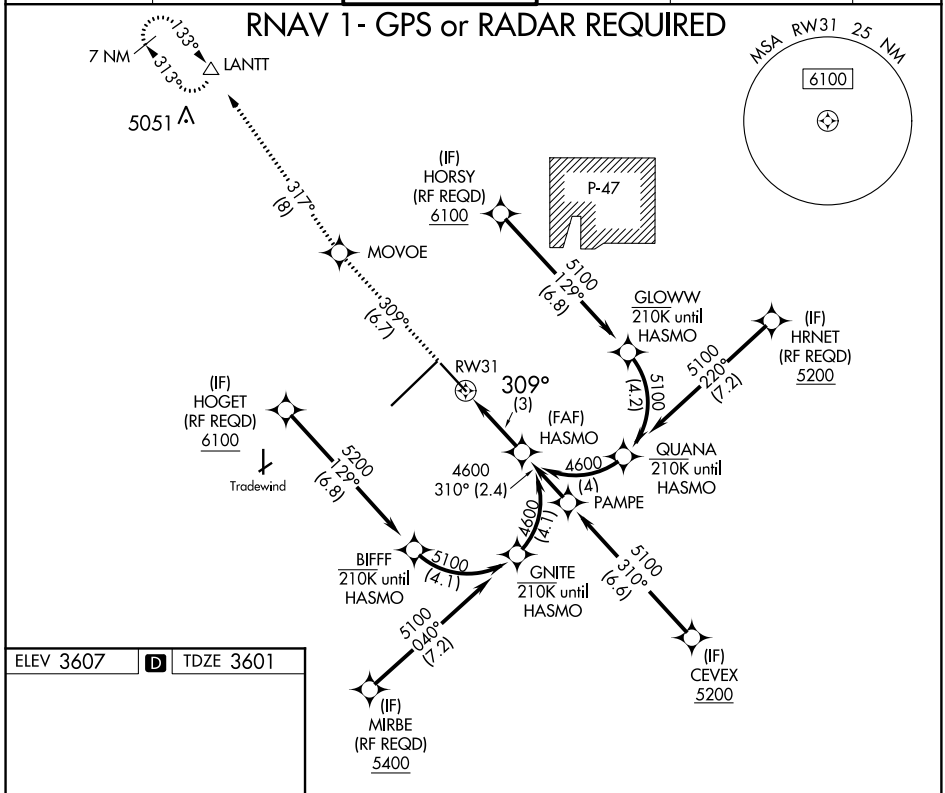
# RNAV (RNP) Z RWY 31

RICK HUSBAND AMARILLO INTL (AMA)

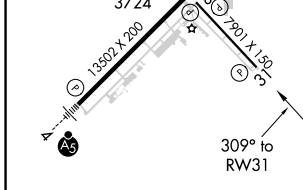
**ASR** For uncompensated Baro-VNAV systems, procedure NA below -14°C (7°F) or above 51°C (124°F). GPS required.

**MISSED APPROACH:** Climb to 6200 on track 309° to MOVVOE and track 317° to LANTT and hold.

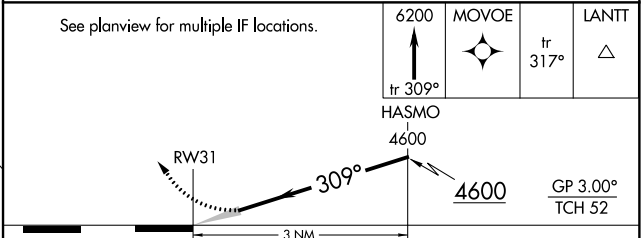
ATIS <b>118.85 350.3</b>	AMARILLO APP CON* <b>119.5 307.0</b>	AMARILLO TOWER* <b>118.3(CTAF) 257.9</b>	GND CON <b>121.9 348.6</b>	CLNC DEL <b>121.65 239.275</b>	UNICOM <b>122.95</b>
-----------------------------	---	---	-------------------------------	-----------------------------------	-------------------------



ELEV 3607	<b>D</b>	TDZE 3601
-----------	----------	-----------



REIL Rwy 13 **①**  
 REIL Rwy 31  
 HIRL Rwy 4-22 and 13-31



CATEGORY	A	B	C	D
RNP 0.30 DA		3930-1½	329 (400-1½)	

**AUTHORIZATION REQUIRED**

SC-2, 31 JAN 2019 to 28 FEB 2019

SC-2, 31 JAN 2019 to 28 FEB 2019