

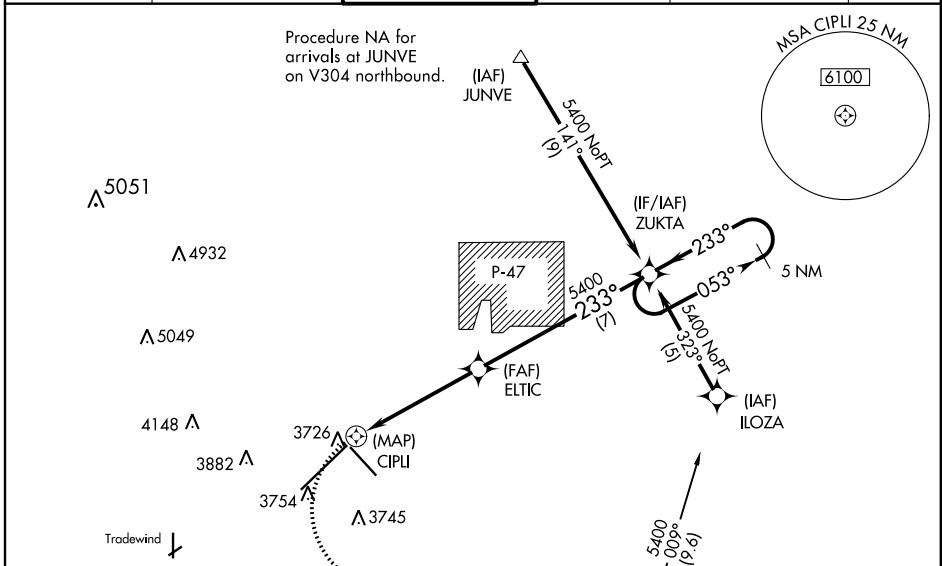
APP CRS 233°	Rwy Idg TDZE Apt Elev	13502 3606 3607
------------------------	-----------------------------	--

RNAV (GPS) Y RWY 22

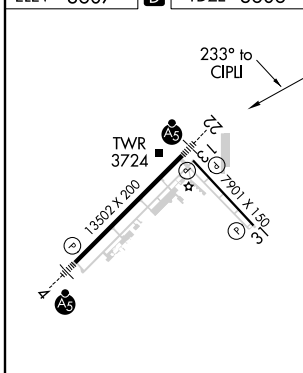
RICK HUSBAND AMARILLO INTL (A.M.A)

<p>For inop MALSR, increase LNAV Cat D visibility to 1¼ mile and Cat E visibility to 1½ mile. DME/DME RNP-0.3 NA. When local altimeter setting not received, use Borger altimeter setting and increase all MDA 160 feet, increase LNAV Cat C visibility ¼ mile, Cat D visibility ¾ mile, Cat E visibility 1 mile, Circling Cat C visibility ¼ mile and Cat D visibility ½ mile. VDP NA with Borger altimeter setting. Inop table does not apply to LNAV Cats D and E with Borger altimeter setting.</p>	<p>MALSR</p>	<p>MISSED APPROACH: Climbing left turn to 5400 direct CAUDE and hold</p>

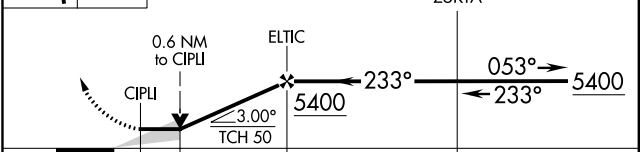
ATIS 118.85 350.3	AMARILLO APP CON* 119.5 307.0	AMARILLO TOWER* 118.3(CTAF) 257.9	GND CON 121.9 348.6	CLNC DEL 121.65 239.275	UNICOM 122.95
-----------------------------	---	---	-------------------------------	-----------------------------------	-------------------------



ELEV 3607	D	TDZE 3606
-----------	----------	-----------



5400	CAUDE	VGSI and descent angles not coincident (VGSI Angle 3.00/TCH 77).	5 NM Holding Pattern
------	-------	--	----------------------



CATEGORY	A	B	C	D	E
LNAV MDA	4020-½	414 (500-½)	4020-¾ 414 (500-¾)	4020-1	414 (500-1)
CIRCLING	4080-1	473 (500-1)	4080-1½ 473 (500-1½)	4240-2 633 (700-2)	4460-3 853 (900-3)

REIL Rwy 13

REIL Rwy 31

HIRL Rws 4-22 and 13-31

SC-2, 31 JAN 2019 to 28 FEB 2019

SC-2, 31 JAN 2019 to 28 FEB 2019