

WAAS CH 82319 W31A	APP CRS 310°	Rwy Idg TDZE Apt Elev	7901 3601 3607
--	------------------------	-----------------------------	---

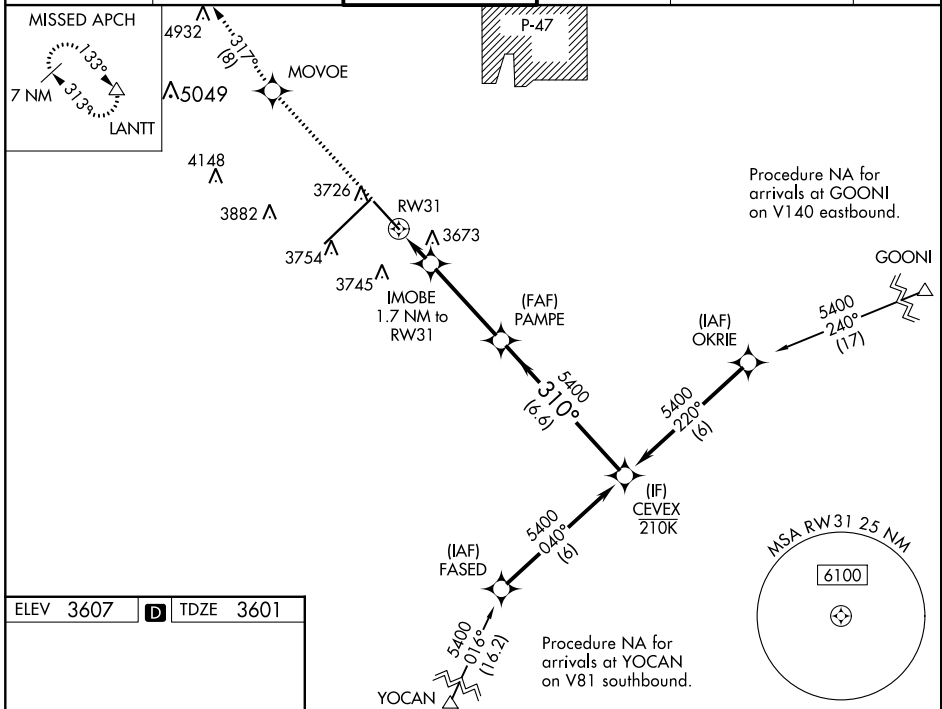
RNAV (GPS) Y RWY 31

RICK HUSBAND AMARILLO INTL (AMA)

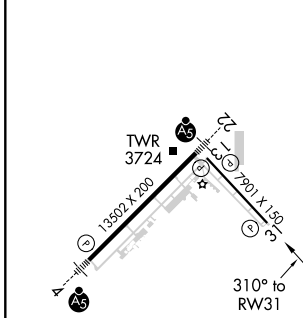
ASR **▼** DME/DME RNP-0.3 NA. For uncompensated Baro-VNAV systems, LNAV/VNAV NA below -14°C (7°F) or above 46°C (116°F). When local altimeter setting not received, use Barger altimeter setting: increase DA to 4004 and all visibilities 5/8 mile; increase all MDA 160 feet and visibility Cat C and D 1/2 mile. Baro-VNAV and VDP NA when using Barger altimeter setting.

MISSED APPROACH: Climb to 6100 direct MOVEO and on track 317° to LANIT and hold.

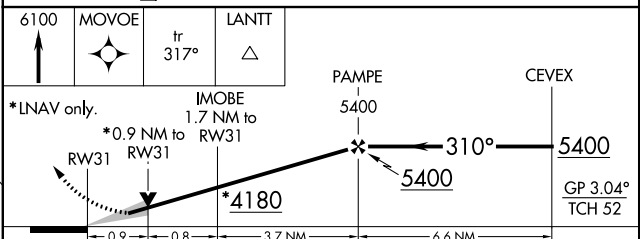
ATIS 118.85 350.3	AMARILLO APP CON* 119.5 307.0	AMARILLO TOWER* 118.3 (CTAF) 257.9	GND CON 121.9 348.6	CLNC DEL 121.65 239.275	UNICOM 122.95
-----------------------------	---	--	-------------------------------	-----------------------------------	-------------------------



ELEV 3607	D	TDZE 3601
-----------	----------	-----------



REIL Rwy 13 **①**
REIL Rwy 31
HIRL Rwy 4-22 and 13-31



CATEGORY	A	B	C	D
LPV DA		3851-3/4	250 (300-3/4)	
LNAV/VNAV DA		3851-3/4	250 (300-3/4)	
LNAV MDA		3940-1	339 (400-1)	
C CIRCLING	4080-1	473 (500-1)	4240-1 3/4 633 (700-1 3/4)	4280-2 1/4 673 (700-2 1/4)

SC-2, 31 JAN 2019 to 28 FEB 2019

SC-2, 31 JAN 2019 to 28 FEB 2019