

WAAS CH 82718 W04A	APP CRS 038°	Rwy Idg 13502 TDZE 3607 Apt Elev 3607
--	------------------------	--

RNAV (GPS) Y RWY 4

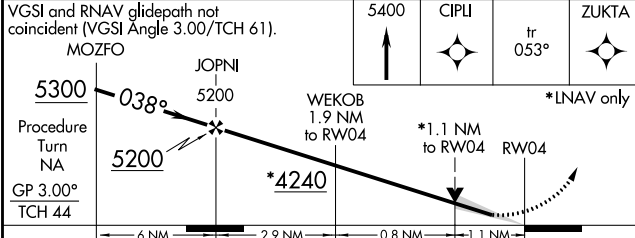
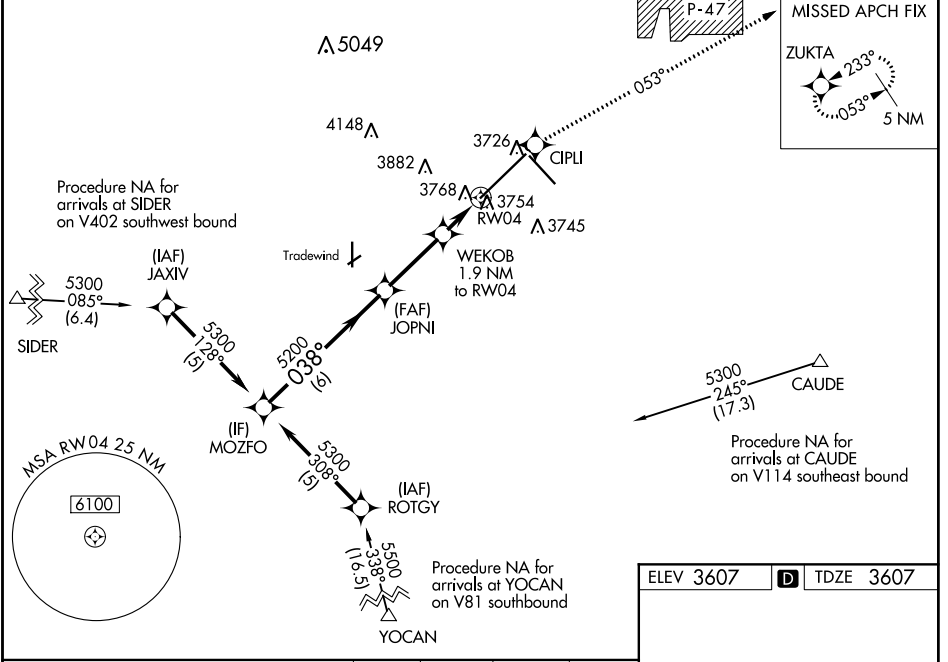
RICK HUSBAND AMARILLO INTL (AMA)

For uncompensated Baro-VNAV systems, LNAV/VNAV NA below -22°C (-7°F) or above 41°C (105°F).
 ▼ DME/DME RNP-0.3 NA. When local altimeter setting not received, use Baro altimeter setting and increase all DA 153 feet and all MDA 160 feet, increase LPV all Cats visibility 1/4 mile, LNAV/VNAV all Cats visibility 1/2 mile, LNAV Cats C and D visibility 1/4 mile and Cat E visibility 1/2 mile, Circling Cat C visibility 1/4 mile and Circling Cat D visibility 1/2 mile. Baro-VNAV and VDP NA with Baro altimeter setting. For inop MALS/R, increase LPV Cat E visibility to RVR 4000. LNAV/VNAV Cat E visibility ASR to 1 1/2 mile, LNAV Cat D visibility to RVR 6000 and Cat E visibility 1 1/2 mile. For inop MALS/R with Baro altimeter setting, increase LPV all Cats visibility to RVR 6000, LNAV/VNAV all Cats visibility 2 miles, LNAV Cat D visibility to 1 3/4 mile, and Cat E visibility to 2 miles.

MALS/R

MISSED APPROACH:
Climb to 5400
direct CIPLI
and on track
053° to
ZUKTA
and hold.

ATIS 118.85 350.3	AMARILLO APP CON* 119.5 307.0	AMARILLO TOWER* 118.3 (CTAF) 0 257.9	GND CON 121.9 348.6	CLNC DEL 121.65 239.275	UNICOM 122.95
-----------------------------	---	---	-------------------------------	-----------------------------------	-------------------------



ELEV 3607	D TDZE 3607
-----------	--------------------

TWR 3724

13502 Y 200

700 X 150

038° to RW04

REIL Rwy 13
REIL Rwy 31
HIRL Rws 4-22 and 13-31

SC-2, 31 JAN 2019 to 28 FEB 2019

SC-2, 31 JAN 2019 to 28 FEB 2019