

LOC/DME I-ATL <b>109.9</b> Chan <b>36</b>	APP CRS <b>095°</b>	Rwy Idg 8R <b>9999 8800</b> 8L <b>1024 1015</b> Apt Elev <b>1026 1026</b>
---	------------------------	--

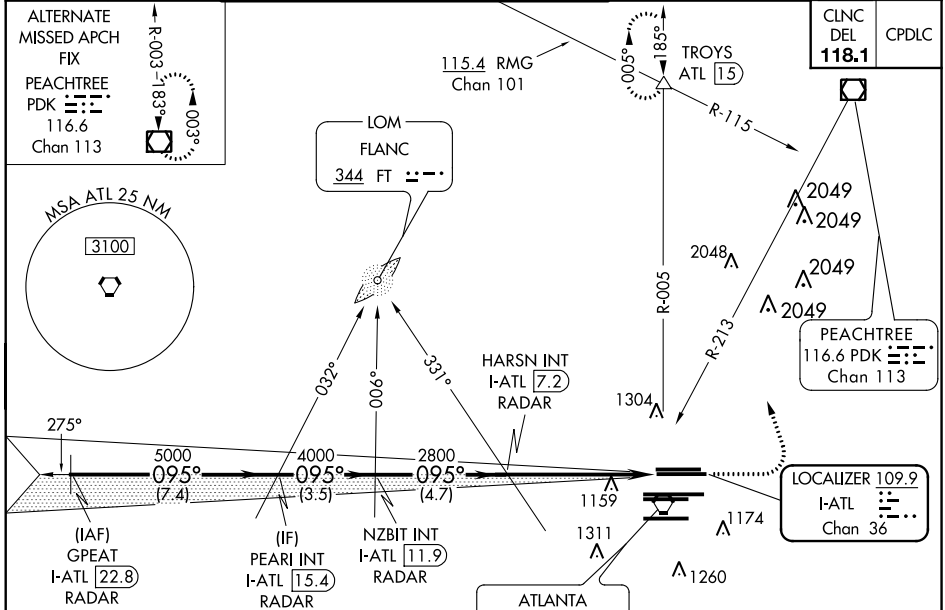
# ILS or LOC RWY 8R

## HARTSFIELD-JACKSON ATLANTA INTL (ATL)

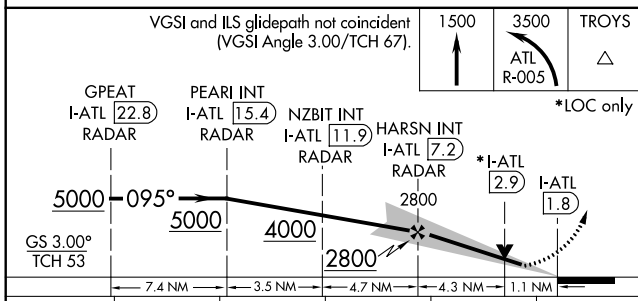
**▼** Inop table does not apply to Sidestep 8L Cats A and B.  
For inop ALSF-2, increase Sidestep 8L Cat E visibility to 2.  
Simultaneous approach authorized with Rwy 9L or 9R or 10.  
ADF or DME or RADAR required.

Rwy 8L ALSF-2  
**MISSED APPROACH:** Climb to 1500 then climbing left turn to 3500 on ATL VORTAC R-005 to TROYS INT/ATL 15 DME and hold. (TACAN aircraft climb to 1500 then climbing left turn to 3500 on heading 005° for RADAR vectors.)

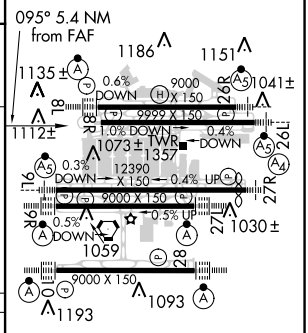
D-ATIS ARR <b>119.65</b>	ATLANTA APP CON DEP <b>127.9 379.9</b>	ATLANTA TOWER 8L-26R 8R-26L 9L-27R 9R-27L 10-28 RWYS <b>119.1 125.325 123.85 119.3 119.5 254.4</b>				ALL RWYS <b>121.9</b>	GND CON (8L-26R,8R-26L) (9L-27R,9R-27L) 10-28 RWYS <b>121.75</b>	ALL RWYS <b>121.65 254.4</b>
-----------------------------	--	--	--	--	--	-----------------------------	--	------------------------------------



### RADAR REQUIRED



ELEV 1026	TDZE 8R 1024	TDZE 8L 1015
-----------	--------------	--------------



CATEGORY	A	B	C	D	E
S-ILS 8R	1278/40		254 (300-¾)		
S-LOC 8R	1440/55	416 (500-1)	1440/60		416 (500-1½)
SIDESTEP 8L	1440/55		425 (500-1)	1440-1½ 425 (500-1½)	

HIRT all Rwys TDZ/CL Rwys 8L, 9R, 10, 26R, 27L and 28					
FAF to MAP 5.4 NM					
Knots	60	90	120	150	180
Min:Sec	5:24	3:36	2:42	2:10	1:48

SE-4, 31 JAN 2019 to 28 FEB 2019

SE-4, 31 JAN 2019 to 28 FEB 2019