

LOC/DME I-HZK <b>110.5</b> Chan <b>42</b>	APP CRS <b>095°</b>	Rwy Idg 9L <b>11730 8925</b> 9R <b>1019 1026</b> TDZE <b>1026 1026</b> Apt Elev
---	------------------------	--

# ILS or LOC RWY 9L

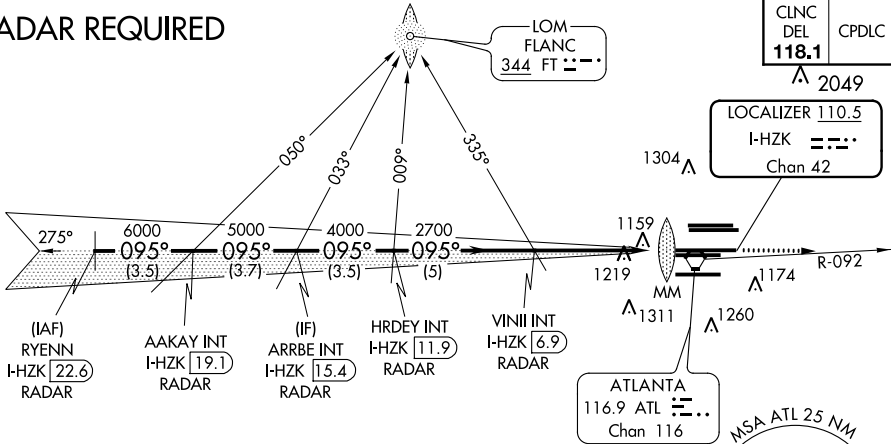
HARTSFIELD-JACKSON ATLANTA INTL (ATL)

For inop MALSRS, increase S-ILS 9L all Cats visibility to RVR 6000 and S-LOC 9L Cats A/B visibility to RVR 5000, Cats C/D visibility to 1/2 mile. Inop table does not apply to sidestep 9R Cats A and B. Simultaneous approach authorized with Rwy 8L or 8R or 10, or Rwy 8L and 10. ADF or DME or RADAR required. Helicopter visibility reduction below RVR 4000 NA.

Rwy 9L MALSRS 	Rwy 9R ALSF-2 	MISSED APPROACH: Climb to 1500 then climbing left turn to 4000 on ATL VORTAC R-092 to CONNI INT/ATL 31 DME and hold.
----------------------	----------------------	--

D-ATIS ARR <b>119.65</b>	ATLANTA APP CON <b>127.9 379.9</b>	ATLANTA TOWER 8L-26R 8R-26L 9L-27R 9R-27L 10-28 RWYS <b>119.1 125.325 123.85 119.3 119.5 254.4</b>				ALL RWYS <b>121.9</b>	GND CON ALL <b>121.75 121.65 254.4</b>
-----------------------------	--	--	--	--	--	-----------------------------	--

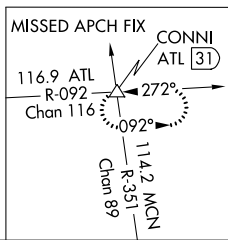
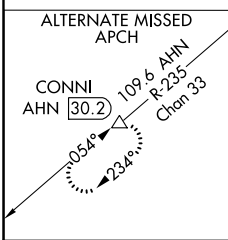
## RADAR REQUIRED



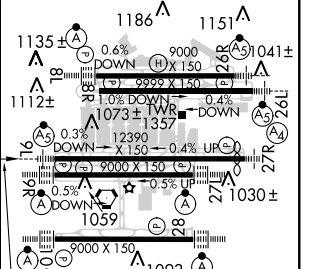
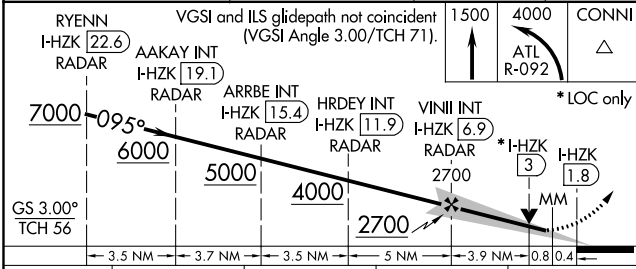
CINC DEL <b>118.1</b>	CPDLC
-----------------------------	-------

SE-4, 31 JAN 2019 to 28 FEB 2019

SE-4, 31 JAN 2019 to 28 FEB 2019



ELEV 1026	TDZE 9L 1019	TDZE 9R 1026
-----------	--------------	--------------



CATEGORY	A	B	C	D
S-ILS 9L	1359/40		340 (400-3/4)	
S-LOC 9L	1480/40	461 (500-3/4)	1480/50	461 (500-1)
SIDESTEP 9R	1480/55	454 (500-1)	1480-1 3/4 454 (500-1 3/4)	1480-2 454 (500-2)

FAF to MAP 5.1 NM					
Knots	60	90	120	150	180
Min:Sec	5:06	3:24	2:33	2:02	1:42