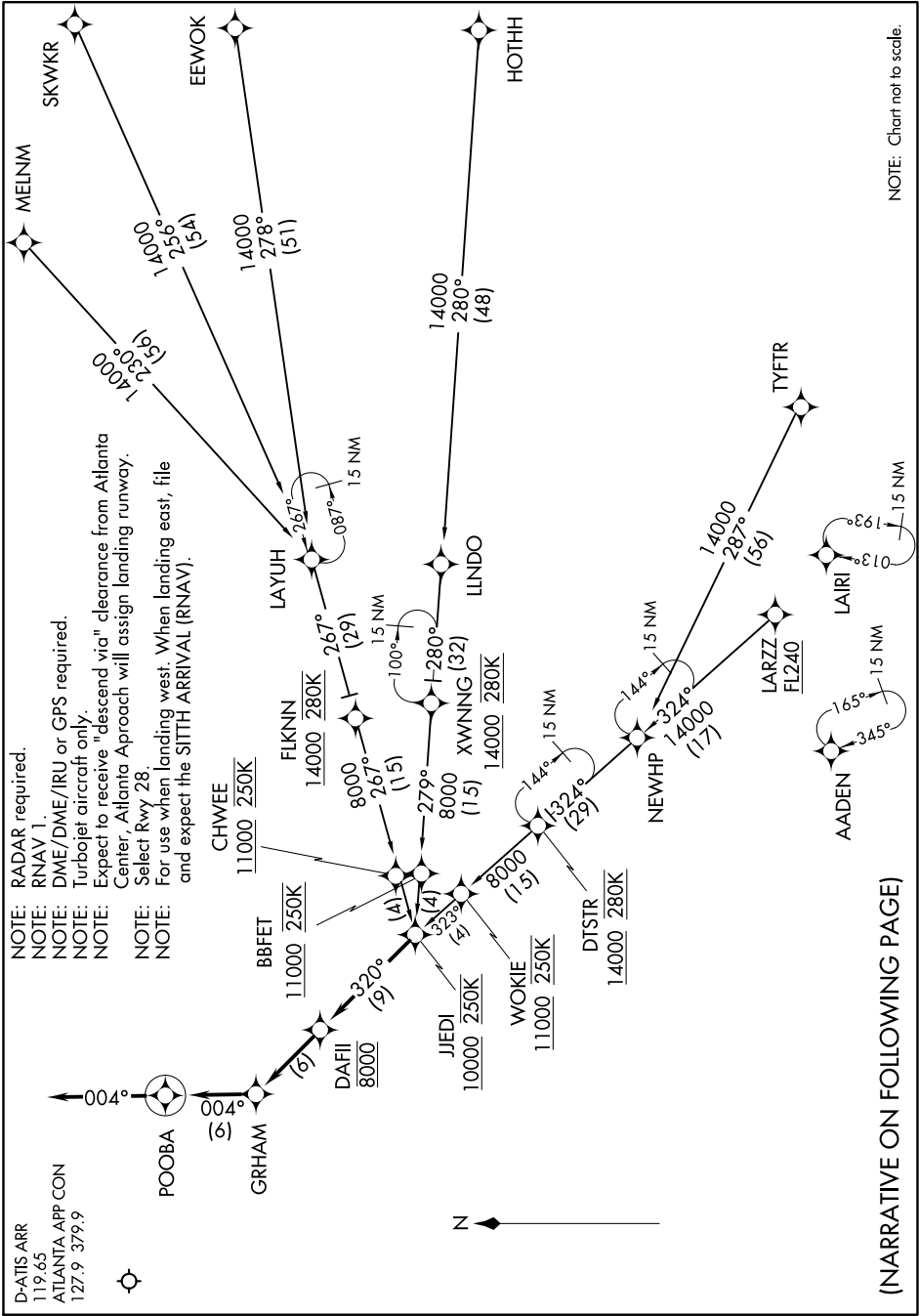


JJEDI TWO ARRIVAL (RNAV)

Transition Routes

SE-4, 31 JAN 2019 to 28 FEB 2019



D-ATIS ARR
119.65
ATLANTA APP CON
127.9 379.9

- NOTE: RADAR required.
- NOTE: RNAV 1.
- NOTE: DME/DME/IRU or GPS required.
- NOTE: Turbojet aircraft only.
- NOTE: Expect to receive "descend vica" clearance from Atlanta Center. Atlanta Approach will assign landing runway.
- NOTE: Select Rwy 28.
- NOTE: For use when landing west. When landing east, file and expect the SITH ARRIVAL (RNAV).

NOTE: Chart not to scale.

(NARRATIVE ON FOLLOWING PAGE)

SE-4, 31 JAN 2019 to 28 FEB 2019