

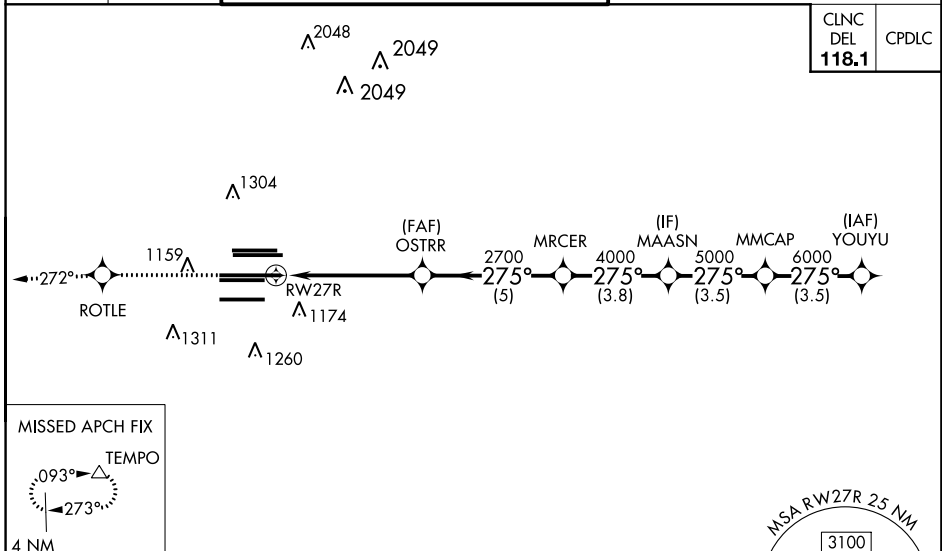
RNAV (GPS) PRM RWY 27R (SIMULTANEOUS CLOSE PARALLEL) HARTSFIELD-JACKSON ATLANTA INTL (ATL)

WAAS CH 70400 W27B	APP CRS 275°	Rwy Idg 11690 TDZE 985 Apt Elev 1026
--	------------------------	---

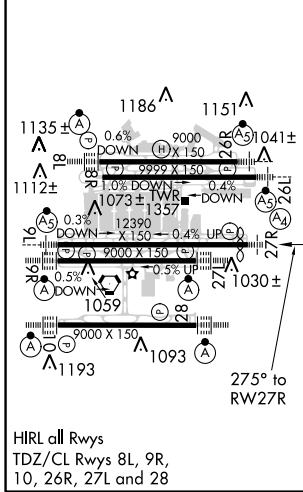
▼ For uncompensated Baro-VNAV systems, LNAV/VNAV NA below -7°C (20°F) or above 54°C (130°F). DME/DME RNP-0.3 NA. Simultaneous close parallel approach authorized with ILS PRM and RNAV PRM Rwy 26R or 26L or 28, or Rwys 26R and 28, or Rwys 26L and 28. Dual VHF Comm required. Use of FD or AP providing RNAV track guidance required during simultaneous operations. See additional requirements on AAUP. For inop MALS, increase LNAV/VNAV Cat D visibility to 1½ miles. Inop table does not apply to LPV, all Cats.

MALS 	MISSED APPROACH: Climb to 4000 direct ROTLE and on track 272° to TEMPO and hold.
----------	--

D-ATIS ARR 119.65 DEP 125.55	ATLANTA APP CON 127.9 379.9	ATLANTA TOWER 8L-26R 119.1 8R-26L 125.325 9L-27R 123.85 9R-27L 119.3 10-28 RWYS 119.5 254.4 PRM 132.55	ALL RWYS 121.9	GND CON 8L-26R,8R-26L 121.75 9L-27R,9R-27L 121.65 10-28 254.4	ALL RWYS
--	---------------------------------------	--	--------------------------	---	----------

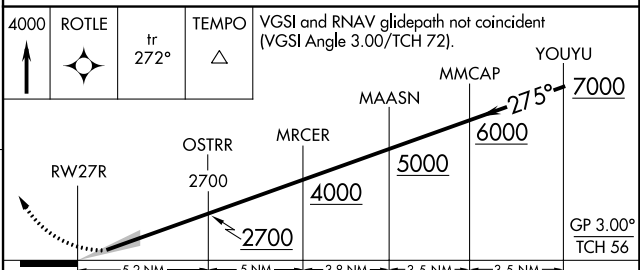


ELEV 1026	D	TDZE 985
-----------	----------	----------



RADAR REQUIRED

MSA RWY 27R 25 NM
3100



CATEGORY	A	B	C	D
LPV DA		1185/40	200 (200-¾)	
LNAV/VNAV DA		1461-1¾	476 (500-1¾)	

RNAV (GPS) PRM RWY 27R (SIMULTANEOUS CLOSE PARALLEL)

SE-4, 31 JAN 2019 to 28 FEB 2019

SE-4, 31 JAN 2019 to 28 FEB 2019