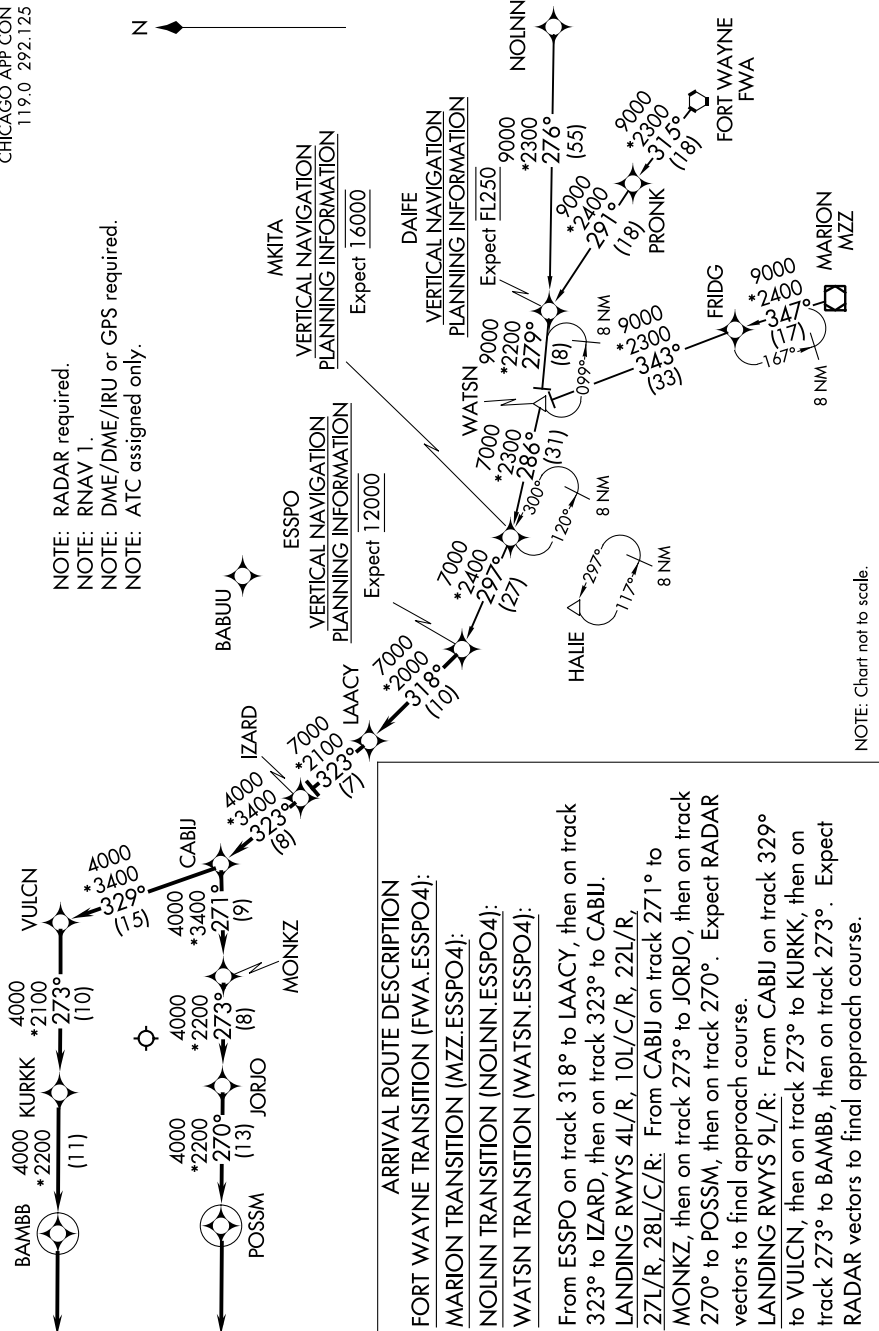


ESSPO FOUR ARRIVAL (RNAV)

D-ATIS
135.4 282.225
CHICAGO APP CON
119.0 292.125

NOTE: RADAR required.
NOTE: RNAV 1.
NOTE: DME/DME/IRU or GPS required.
NOTE: ATC assigned only.



ARRIVAL ROUTE DESCRIPTION:
FORT WAYNE TRANSITION (FWA.ESSPO4):
MARION TRANSITION (MZZ.ESSPO4):
NOLNN TRANSITION (NOLNN.ESSPO4):
WATSN TRANSITION (WATSN.ESSPO4):

From ESSPO on track 318° to LAACY, then on track 323° to IZARD, then on track 323° to CABIJ.
LANDING RWYS 4L/R, 10L/C/R, 22L/R, 27L/R, 28L/C/R: From CABIJ on track 271° to MONKZ, then on track 273° to JORJO, then on track 270° to POSSM, then on track 270°. Expect RADAR vectors to final approach course.
LANDING RWYS 9L/R: From CABIJ on track 329° to VULCN, then on track 273° to KURKK, then on track 273° to BAMB B, then on track 273°. Expect RADAR vectors to final approach course.

NOTE: Chart not to scale.

EC-3, 31 JAN 2019 to 28 FEB 2019

EC-3, 31 JAN 2019 to 28 FEB 2019