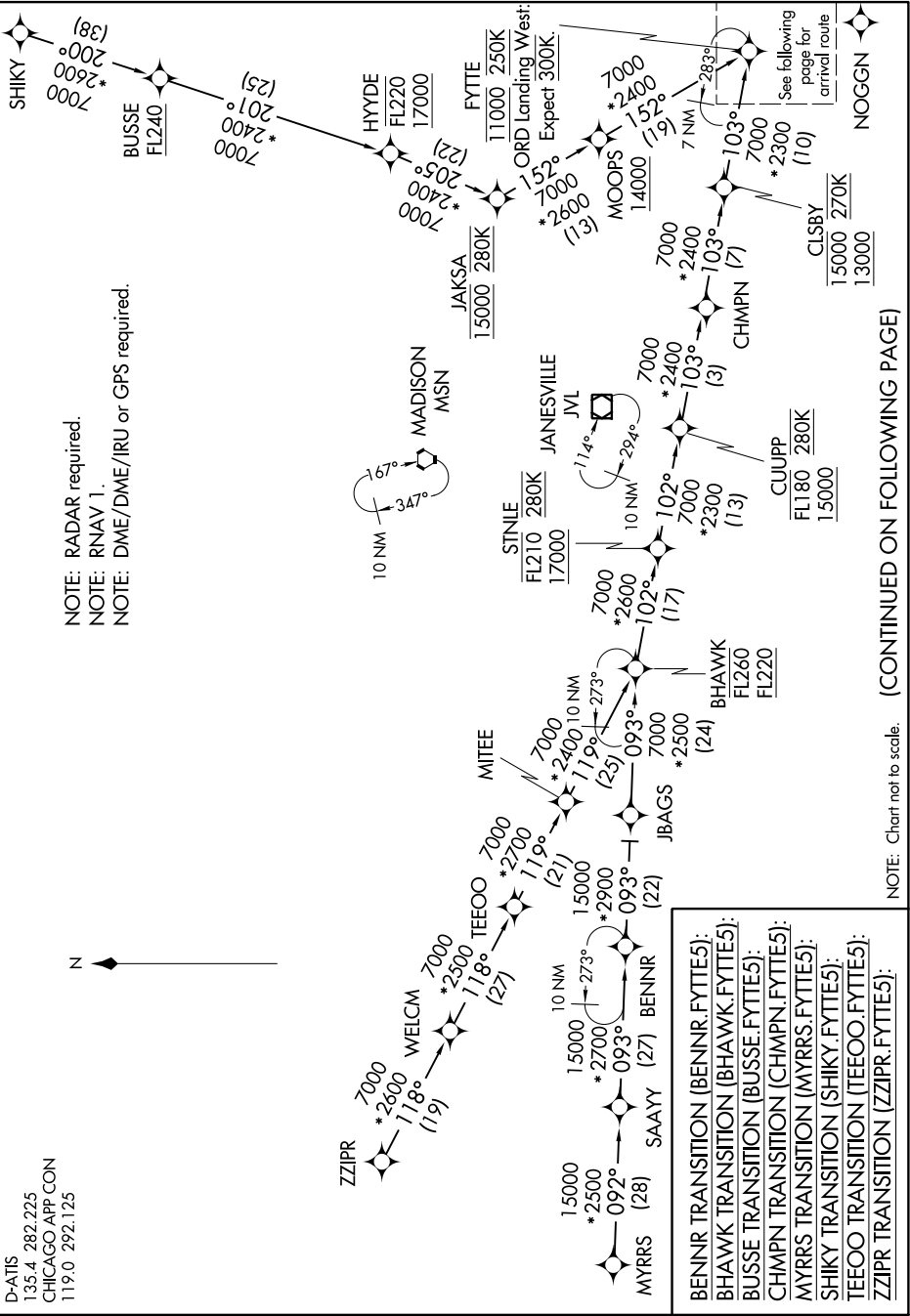


# FYTTE FIVE ARRIVAL (RNAV) Transition Routes

EC-3, 31 JAN 2019 to 28 FEB 2019

D-ATIS  
135.4 282.225  
CHICAGO APP CON  
119.0 292.125

NOTE: RADAR required.  
NOTE: RNAV 1.  
NOTE: DME/DME/IRU or GPS required.



NOTE: Chart not to scale. (CONTINUED ON FOLLOWING PAGE)

EC-3, 31 JAN 2019 to 28 FEB 2019