

LOC/DME I-SXH 108.95 Chan 26(Y)	APP CRS 093°	Rwy Idg 10540 TDZE 669 Apt Elev 680
--	------------------------	--

ILS RWY 10C (CAT II & III)

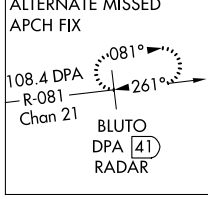
CHICAGO O'HARE INTL (ORD)

From GIBNS: RNAV-1 GPS required.
 RNAV 1-GPS or RADAR required for procedure entry. DME or RADAR required.
 Simultaneous approach authorized. CAT II: RVR 1000 authorized with specific OPSPEC, MSPEC, or LOA approval and use of autoland or HUD to touchdown.

ALSIF-2
 MISSED APPROACH: Climb to 4000 on heading 093° and CGT VORTAC R-336 to CGT VORTAC and hold.

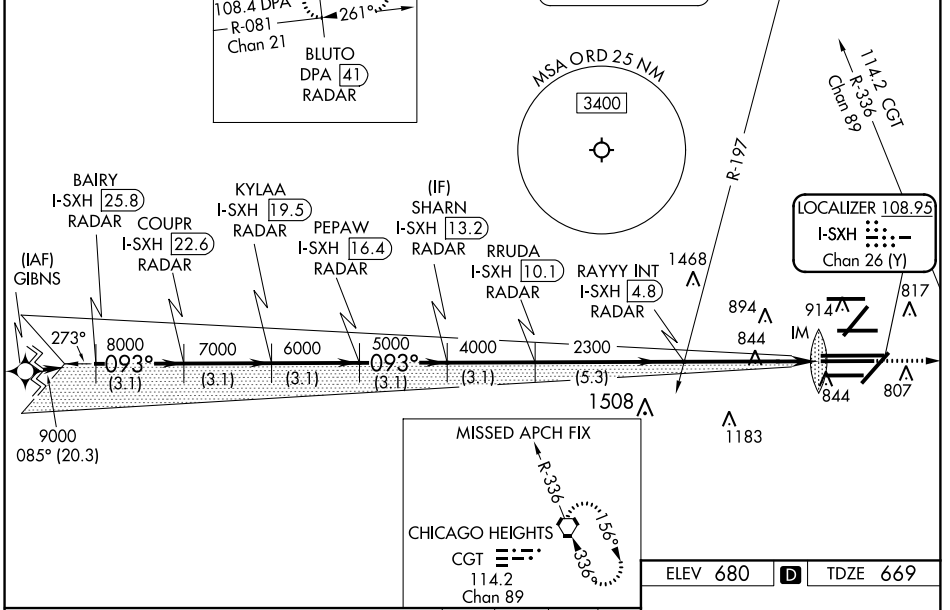
CHICAGO APP CON 119.0 292.125	O'HARE TOWERS 128.15 348.0 (Rwy 9L/27R) 133.0 348.0 (10R/28L) 120.75 121.15 126.9 132.7 348.0 (CENTER)	GND CON (TWR CENTER) 124.125 (TWR NORTH) 121.75 (OBND) 118.05 (TWR SOUTH) 121.9 (IBND) 226.675 (ALL TWRs)	CLNC DEL 121.6
---	---	---	--------------------------

D-ATIS
135.4
282.225



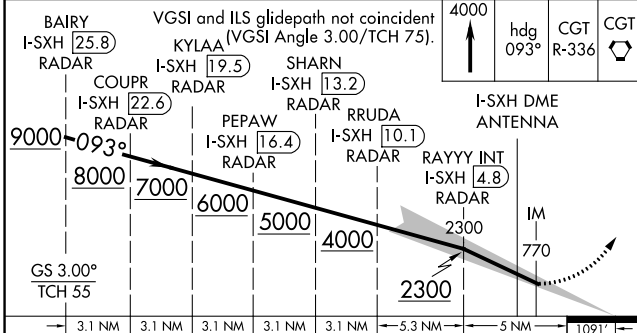
NORTHBROOK
113.0 OBK
Chan 77

CPDLC



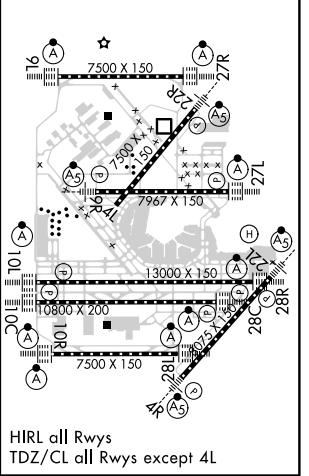
EC-3, 31 JAN 2019 to 28 FEB 2019

EC-3, 31 JAN 2019 to 28 FEB 2019



ELEV 680	D	TDZE 669
----------	----------	----------

BAIRY I-SXH [25.8] RADAR	KYLAA I-SXH [19.5] RADAR	SHARN I-SXH [13.2] RADAR	I-SXH DME ANTENNA	
COUPR I-SXH [22.6] RADAR	PEPAW I-SXH [16.4] RADAR	RRUDA I-SXH [10.1] RADAR	RAYYY INT I-SXH [4.8] RADAR	
GS 3.00° TCH 55 9000 8000 7000 6000 5000 4000 2300 3.1 NM 3.1 NM 3.1 NM 3.1 NM 3.1 NM 5.3 NM 5 NM 1091'				
CATEGORY	A	B	C	D
S-ILS 10C	CAT II RA 102/12 100 DA 769			
S-ILS 10C	CAT III RVR 06			



HIRL all Rwys
 TDZ/CL all Rwys except 4L