

LOC/DME I-SXH <b>108.95</b> Chan 26(Y)	APP CRS <b>093°</b>	Rwy Idg <b>10540</b> TDZE <b>669</b> Apt Elev <b>680</b>
--	------------------------	--

# ILS RWY 10C (SA CAT I)

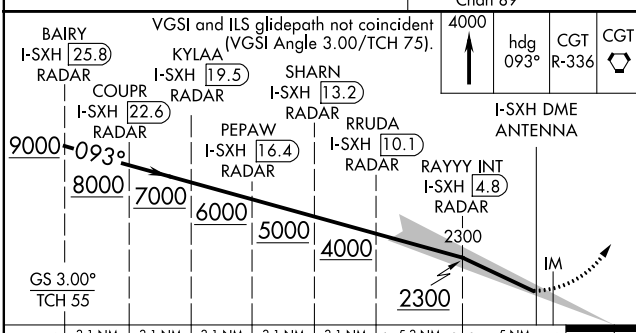
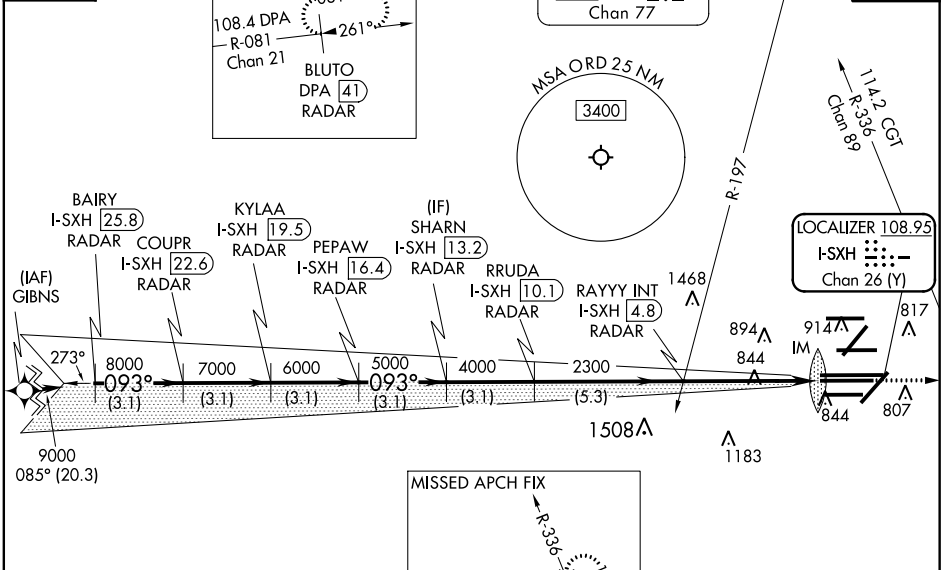
CHICAGO O'HARE INTL (ORD)

From GIBNS: RNAV-1 GPS required.  
 RNAV 1-GPS or RADAR required for procedure entry. DME or RADAR required.  
 Simultaneous approach authorized. Requires special OPSPEC, MSPEC, or LOA approval and use of HUD to DH.

ALSF-2  
 MISSED APPROACH: Climb to 4000 on heading 093° and CGT VORTAC R-336 to CGT VORTAC and hold.

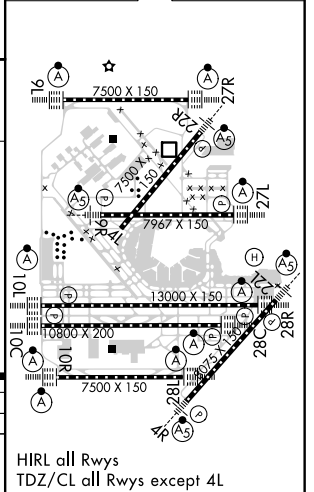
CHICAGO APP CON <b>119.0 292.125</b>	O'HARE TOWERS <b>128.15 348.0</b> (Rwy 9L/27R) <b>133.0 348.0</b> (10R/28L) <b>126.9 348.0</b> (CENTER)	GND CON (TWR CENTER) <b>124.125</b> (TWR NORTH) <b>121.75</b> (OBND) <b>118.05</b> (TWR SOUTH) <b>121.9</b> (IBND)	CLNC DEL <b>121.6</b>
---	--	---	--------------------------

D-ATIS <b>135.4</b> <b>282.225</b>	ALTERNATE MISSED APCH FIX	NORTHBROOK 113.0 OBK Chan 77	CPDLC
--	---------------------------	------------------------------------	-------



BAIRY I-SXH (25.8) RADAR	COUPR I-SXH (22.6) RADAR	KYLAA I-SXH (19.5) RADAR	PEPAW I-SXH (16.4) RADAR	SHARN I-SXH (13.2) RADAR	RRUDA I-SXH (10.1) RADAR	RAYYY INT I-SXH (4.8) RADAR
3.1 NM	3.1 NM	3.1 NM	3.1 NM	3.1 NM	5.3 NM	5 NM
RA 148/14 150 DA 819						

ELEV 680	TDZE 669
----------	----------



EC-3, 31 JAN 2019 to 28 FEB 2019

EC-3, 31 JAN 2019 to 28 FEB 2019