

LOC/DME I-MED <b>111.1</b> Chan <b>48</b>	APP CRS <b>093°</b>	Rwy Ldg <b>12246</b> TDZE <b>672</b> Apt Elev <b>680</b>
---	------------------------	--

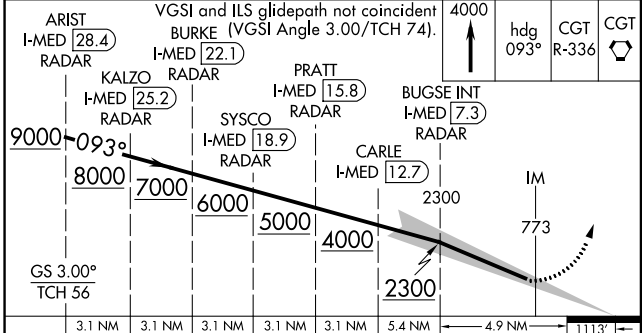
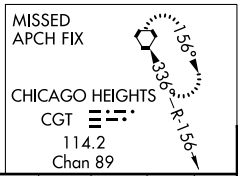
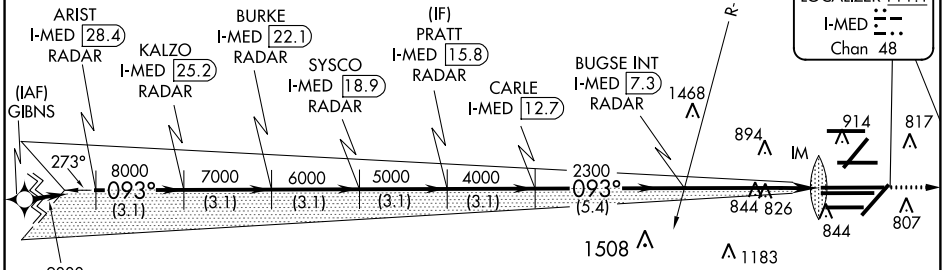
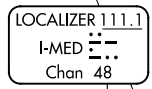
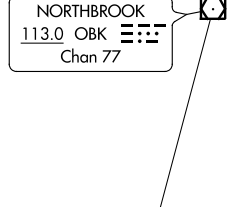
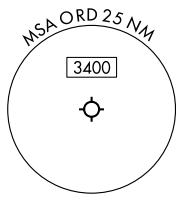
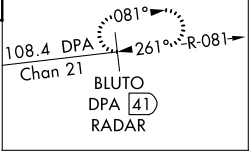
# ILS RWY 10L (CAT II & III)

CHICAGO-O'HARE INTL (ORD)

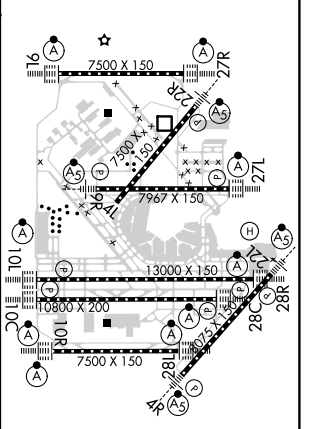
From GIBNS: RNAV-1 GPS required.  
 RNAV 1-GPS or RADAR required for procedure entry. DME or RADAR required.  
 Simultaneous approach authorized.

CHICAGO APP CON <b>119.0 292.125</b>	O'HARE TOWERS <b>128.15 348.0</b> (Rwy 9L/27R) <b>133.0 348.0</b> (110R/28L) <b>126.9 132.7 348.0</b> (CENTER)	GND CON (TWR NORTH) <b>124.125</b> (TWR SOUTH) <b>118.05</b> (ALL TWRs) <b>226.675</b>	(TWR CENTER) <b>121.75</b> (OBND) (IBND) <b>121.9</b>	CLNC DEL <b>121.6</b>
---	---	---	--	--------------------------

D-ATIS <b>135.4</b> <b>282.225</b>	ALTERNATE MISSED APCH FIX	MSA ORD 25 NM <b>3400</b>	NORTHBROOK <b>113.0</b> OBK Chan 77	CPDLC
--	---------------------------	------------------------------	---	-------



ELEV 680	<b>D</b>	TDZE 672
----------	----------	----------



CATEGORY	A	B	C	D
S-ILS 10L	CAT II RA 95/12100 DA 772			
S-ILS 10L	CAT III RVR 06			

**CATEGORY II and III ILS - SPECIAL AIRCREW & AIRCRAFT CERTIFICATION REQUIRED**

HIRL all Rwys  
 TDZ/CL all Rwys except 4L

EC-3, 31 JAN 2019 to 28 FEB 2019

EC-3, 31 JAN 2019 to 28 FEB 2019