

LOC/DME I-IAC 110.5 Chan 42	APP CRS 273°	Rwy ldg 7782	TDZE 654
		Apt Elev 680	

ILS RWY 27L (CAT II & III)

CHICAGO O'HARE INTL (ORD)

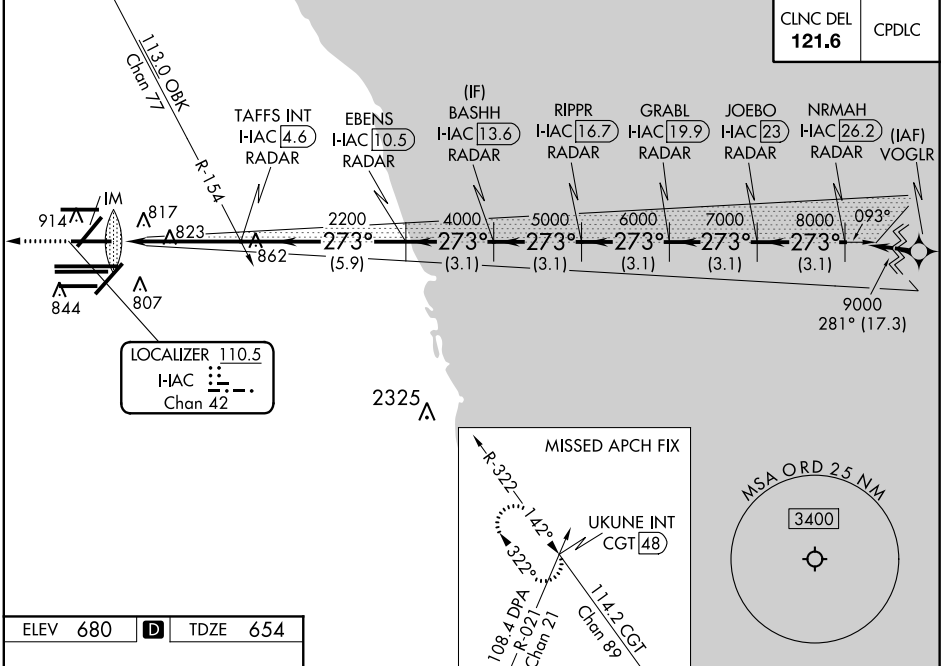
From VOGLR: RNAV 1-GPS required.
 Aircraft not GPS equipped - RADAR required for procedure entry.
 DME or RADAR required.

ALSF-2

MISSED APPROACH: Climb to 1200 then climbing right turn to 4000 on heading 295° and on CGT VORTAC R-322 to UKUNE INT/CGT 48 DME and hold.

Simultaneous approach authorized.

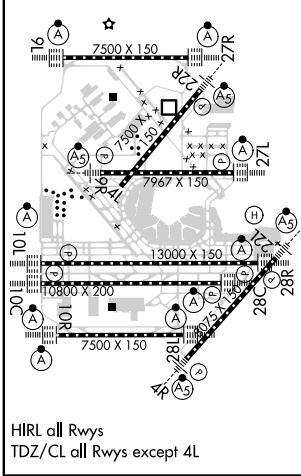
D-ATIS 135.4	CHICAGO APP CON 119.0 292.125	O'HARE TOWERS 128.15 348.0 (Rwy 9L/27R) 133.0 348.0 (10R/28L)	GND CON (TWR NORTH) 124.125	(TWR CENTER) 121.75 (OBND)
		120.75 121.15 126.9 132.7 348.0 (CENTER)	(TWR SOUTH) 118.05	(IBND) 121.9
			(ALL TWSR) 226.675	



EC-3, 31 JAN 2019 to 28 FEB 2019

EC-3, 31 JAN 2019 to 28 FEB 2019

ELEV 680	D	TDZE 654
----------	---	----------



1200	4000	CGT R-322	UKUNE INT	VGSi and ILS glidepath not coincident (VGSi Angle 3.00/TCH 67).			
hdg 295°				BASHH I-IAC 13.6	GRABL I-IAC 19.9	JOEBO I-IAC 23	NRMAH I-IAC 26.2
		TAFSS INT I-IAC 4.6	EBENS I-IAC 10.5	RIPPR I-IAC 16.7			
		H-IAC DME ANTENNA	RADAR	RADAR	RADAR		
		IM 750	2200	4000	5000	6000	7000
							9000
							GS 3.00° TCH 55
		1040'	4.7 NM	5.9 NM	3.1 NM	3.1 NM	3.1 NM
CATEGORY	A	B		C		D	
S-ILS 27L	CAT II RA 110/12			100 DA 754			
S-ILS 27L	CAT III RVR 06						

CATEGORY II & III ILS - SPECIAL AIRCREW & AIRCRAFT CERTIFICATION REQUIRED