

LOC/DME I-VQX 110.75 Chan 44(Y)	APP CRS 274°	Rwy ldg TDZE Apt Elev	7500 667 680
---	------------------------	-----------------------------	---

ILS RWY 28L (SA CAT I)

CHICAGO-O'HARE INTL (ORD)

From VOGLR: RNAV 1-GPS required.

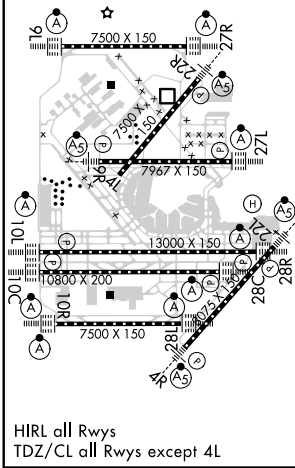
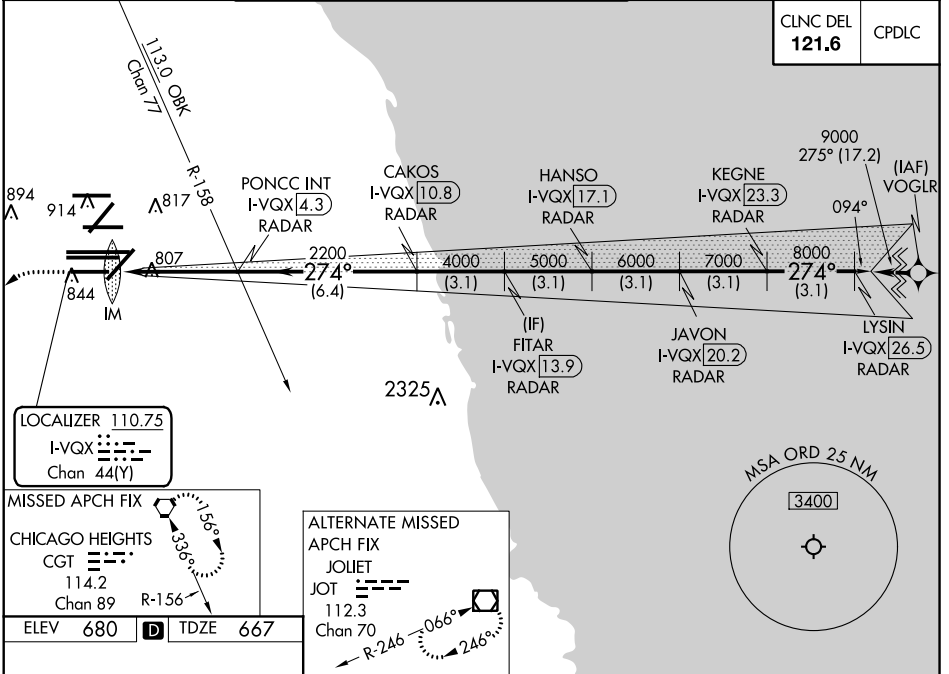
Aircraft not GPS equipped - RADAR required for procedure entry. DME or RADAR required.

Simultaneous approach authorized. Requires specific OPSPEC, MSPEC, or LOA approval and use of HUD to DH. For inop ALS, increase S-LOC 28L Cat C/D visibility to 1/8 SM.

ALS-F-2

MISSED APPROACH: Climb to 1200 then climbing left turn to 4000 direct CGT VORTAC and hold.

D-ATIS 135.4	CHICAGO APP CON 119.0 292.125	O'HARE TOWERS 128.15 348.0 (Rwy 9L/27R) 133.0 348.0 (10R/28L) 120.75 121.15 126.9 132.7 348.0 (CENTER)	GND CON (TWR NORTH) 124.125 (TWR SOUTH) 118.05 (ALL TWRs) 226.675	(TWR CENTER) 121.75 (OBND) (IBND) 121.9
------------------------	---	--	---	--



1200	4000	CGT								
			FITAR I-VQX 13.9	JAVON I-VQX 20.2	LYSIN I-VQX 26.5					
			PONCC INT I-VQX 4.3	HANSO I-VQX 17.1	KEGNE I-VQX 23.3					
			I-VQX DME ANTENNA	CAKOS I-VQX 10.8						
			IM	2200	4000	5000	6000	7000	8000	9000
			99°	4.7 NM	6.4 NM	3.1 NM	3.1 NM	3.1 NM	3.1 NM	3.1 NM
CATEGORY			A	B	C	D				
S-ILS 28L			RA 157/14 150 DA 817							

SA CATEGORY I ILS-SPECIAL AIRCREW & AIRCRAFT CERTIFICATION REQUIRED

EC-3, 31 JAN 2019 to 28 FEB 2019

EC-3, 31 JAN 2019 to 28 FEB 2019