

LOC/DME I-TSL <b>111.1</b> Chan <b>48</b>	APP CRS <b>273°</b>	Rwy ldg <b>13000</b> TDZE <b>651</b> Apt Elev <b>680</b>
---	------------------------	--

# ILS RWY 28R (CAT II & III)

CHICAGO-O'HARE INTL (ORD)

From VOGLR: RNAV 1-GPS required.  
 Aircraft not GPS equipped - RADAR required for procedure entry.  
 DME or RADAR required.

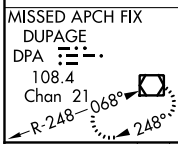
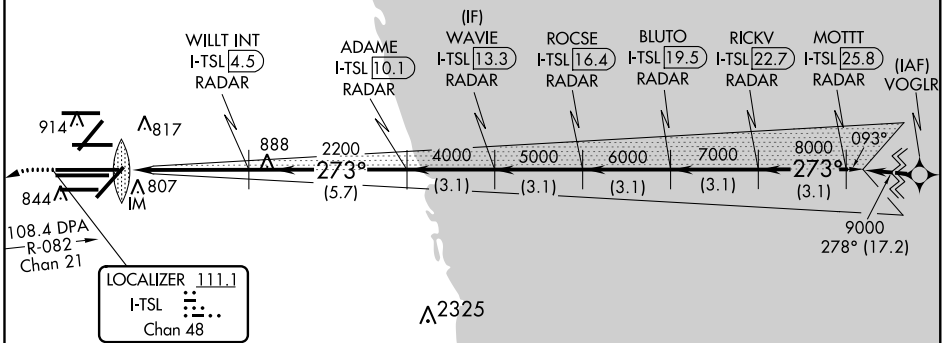
ALSf-2

MISSED APPROACH: Climb to 1100 then climbing left turn to 4000 on heading 215° and DPA VOR/DME R-082 to DPA VOR/DME and hold.

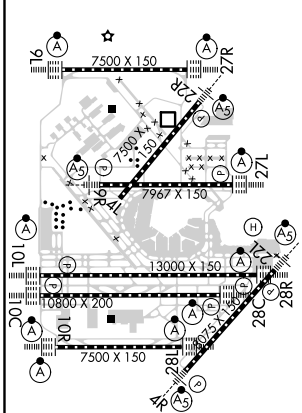
Simultaneous approach authorized.

D-ATIS <b>135.4</b> <b>282.225</b>	CHICAGO APP CON <b>119.0 292.125</b>	O'HARE TOWERS <b>128.15 348.0</b> (Rwy 9L/27R) <b>133.0 348.0</b> (10R/28L) <b>120.75 121.15 126.9 132.7 348.0</b> (CENTER)	GND CON (TWR NORTH) <b>124.125</b> (TWR SOUTH) <b>118.05</b> (ALL TWRs) <b>226.675</b>	(TWR CENTER) <b>121.75</b> (OBND) (IBND) <b>121.9</b>
--	---	--	--	--

CLNC DEL <b>121.6</b>	CPDLC
--------------------------	-------



ELEV 680	<b>D</b>	TDZE 651
----------	----------	----------



1100	4000	DPA	VGSI and ILS glidepath not coincident (VGSI Angle 3.00/TCH 70).	
↑	hdg R-082			
I-TSL DME ANTENNA	WAVIE I-TSL 13.3 RADAR	BLUTO I-TSL 19.5 RADAR	MOTT I-TSL 25.8 RADAR	
WILLT INT I-TSL 4.5 RADAR	ADAME I-TSL 10.1 RADAR	ROCSE I-TSL 16.4 RADAR	RICKV I-TSL 22.7 RADAR	
IM 754	2200	4000	5000 6000 7000 8000 9000	
273°	273°	273°	273°	
GS 3.00°	TCH 54			
1.030	4.7 NM	5.7 NM	3.1 NM 3.1 NM 3.1 NM 3.1 NM 3.1 NM	
CATEGORY	A	B	C D	
S-ILS 28R	CAT II RA 97/12 100 DA 751			
S-ILS 28R	CAT III RVR 06			

## CATEGORY II & III ILS - SPECIAL AIRCREW & AIRCRAFT CERTIFICATION REQUIRED

EC-3, 31 JAN 2019 to 28 FEB 2019

EC-3, 31 JAN 2019 to 28 FEB 2019