

LOC/DME I-SXH 108.95 Chan 26(Y)	APP CRS 093°	Rwy Ldg TDZE 669 Apt Elev 680	10540
--	------------------------	---	--------------

ILS or LOC RWY 10C

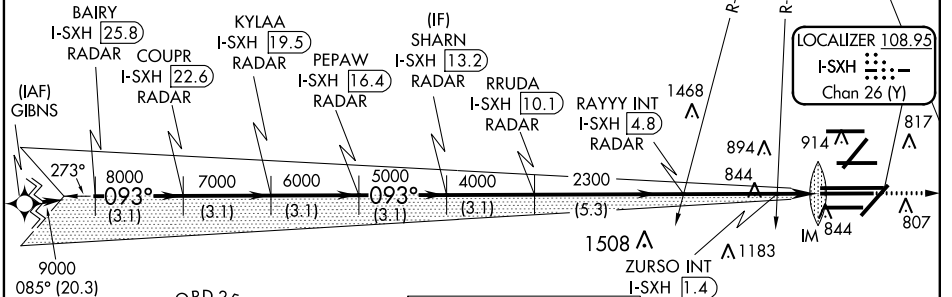
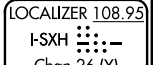
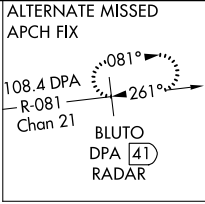
CHICAGO O'HARE INTL (ORD)

From GIBNS: RNAV-1 GPS required.
 RNAV 1-GPS or RADAR required for procedure entry. DME or RADAR required.
 Simultaneous approach authorized.

ALSf-2 A	MISSED APPROACH: Climb to 4000 on heading 093° and CGT VORTAC R-336 to CGT VORTAC and hold.
--------------------	---

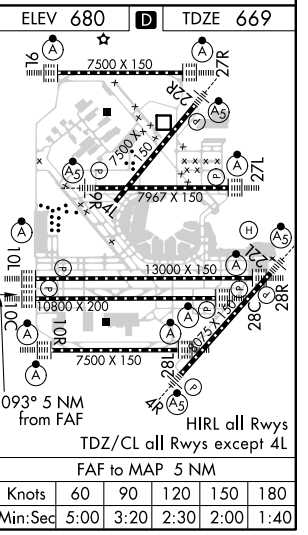
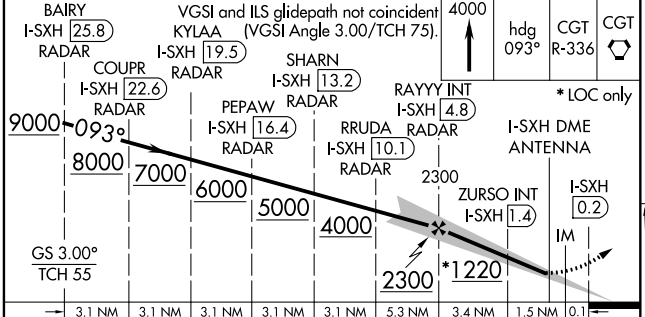
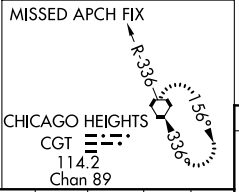
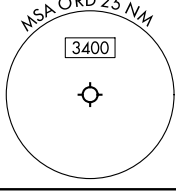
CHICAGO APP CON 119.0 292.125	O'HARE TOWERS Rwy 9L/27R 128.15 348.0 133.0 348.0 (10R/28L) 120.75 121.15 126.9 132.7 348.0 (CENTER)	GND CON (TWR NORTH) 124.125 (TWR SOUTH) 118.05 (ALL TWRs) 226.675	(TWR CENTER) 121.75 (OBND) 121.9 (IBND)	CLNC DEL 121.6
---	---	---	---	--------------------------

D-ATIS 135.4 282.225
--



EC-3, 31 JAN 2019 to 28 FEB 2019

EC-3, 31 JAN 2019 to 28 FEB 2019



BAIRY I-SXH 25.8 RADAR	COUPR I-SXH 22.6 RADAR	KYLAA I-SXH 19.5 RADAR	PEPAW I-SXH 16.4 RADAR	SHARN I-SXH 13.2 RADAR	RRUDA I-SXH 10.1 RADAR	RAYY INT I-SXH 4.8 RADAR	ZURSO INT I-SXH 1.4	I-SXH DME ANTENNA	I-SXH 0.2																																																												
* LOC only																																																																					
<table border="1"> <tr> <td>GS 3.00° TCH 55</td> <td>3.1 NM</td> <td>3.1 NM</td> <td>3.1 NM</td> <td>3.1 NM</td> <td>3.1 NM</td> <td>5.3 NM</td> <td>3.4 NM</td> <td>1.5 NM</td> <td>0.1</td> </tr> <tr> <td>CATEGORY</td> <td colspan="3">A</td> <td colspan="3">B</td> <td colspan="2">C</td> <td>D</td> </tr> <tr> <td>S-ILS 10C</td> <td colspan="9">869/18 200 (200-½)</td> </tr> <tr> <td>S-LOC 10C</td> <td colspan="2">1220/24</td> <td colspan="3">551 (500-½)</td> <td colspan="2">1220/60</td> <td colspan="2">551 (600-1¼)</td> </tr> <tr> <td colspan="10">ZURSO FIX MINIMUMS (DUAL VOR RECEIVERS OR DME REQUIRED)</td> </tr> <tr> <td>S-LOC 10C</td> <td colspan="2">1100/24</td> <td colspan="3">431 (500-½)</td> <td colspan="2">1100/40</td> <td colspan="2">431 (500-¾)</td> </tr> </table>										GS 3.00° TCH 55	3.1 NM	3.1 NM	3.1 NM	3.1 NM	3.1 NM	5.3 NM	3.4 NM	1.5 NM	0.1	CATEGORY	A			B			C		D	S-ILS 10C	869/18 200 (200-½)									S-LOC 10C	1220/24		551 (500-½)			1220/60		551 (600-1¼)		ZURSO FIX MINIMUMS (DUAL VOR RECEIVERS OR DME REQUIRED)										S-LOC 10C	1100/24		431 (500-½)			1100/40		431 (500-¾)	
GS 3.00° TCH 55	3.1 NM	3.1 NM	3.1 NM	3.1 NM	3.1 NM	5.3 NM	3.4 NM	1.5 NM	0.1																																																												
CATEGORY	A			B			C		D																																																												
S-ILS 10C	869/18 200 (200-½)																																																																				
S-LOC 10C	1220/24		551 (500-½)			1220/60		551 (600-1¼)																																																													
ZURSO FIX MINIMUMS (DUAL VOR RECEIVERS OR DME REQUIRED)																																																																					
S-LOC 10C	1100/24		431 (500-½)			1100/40		431 (500-¾)																																																													