

LOC/DME I-MED 111.1 Chan 48	APP CRS 093°	Rwy ldg 12246 TDZE 672 Apt Elev 680
-------------------------------------------------	------------------------	----------------------------------------------------------------

ILS or LOC RWY 10L

CHICAGO-O'HARE INTL (ORD)

From GIBNS: RNAV-1 GPS required.
RNAV 1-GPS or RADAR required for procedure entry. DME or RADAR required.
Simultaneous approach authorized.

ALSF-2
MISSED APPROACH: Climb to 4000 on heading 093° and CGT VORTAC R-336 to CGT VORTAC and hold.

CHICAGO APP CON 119.0 292.125	O'HARE TOWERS 128.15 348.0 (Rwy 9L/27R) 133.0 348.0 (10R/28L) 126.9 348.0 (CENTER)	GND CON (TWR CENTER) 124.125 (TWR NORTH) 118.05 (TWR SOUTH) 226.675 (ALL TWRs)	(TWR CENTER) 121.75 (OBND) 121.9 (IBND)	CLNC DEL 121.6
-----------------------------------------	------------------------------------------------------------------------------------------------------------------	--------------------------------------------------------------------------------------------------------------	-------------------------------------------------------------	--------------------------

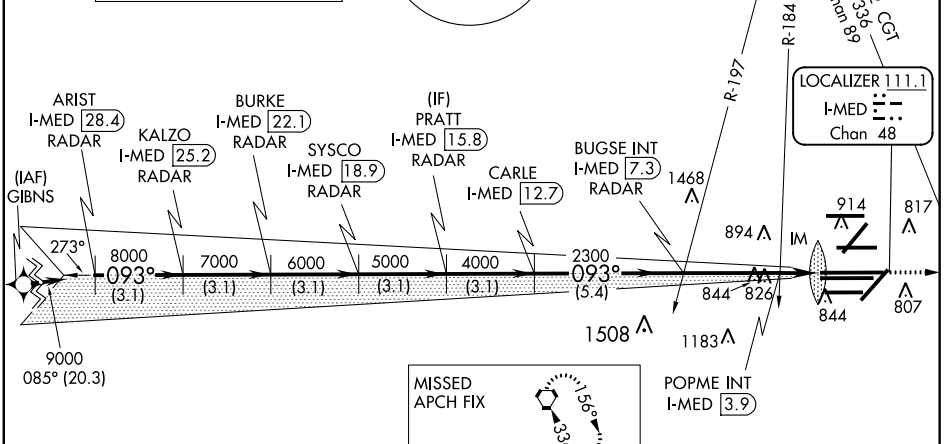
D-ATIS **135.4**
282.225

ALTERNATE MISSED APCH FIX

MSA ORD 2.5 NM
3400

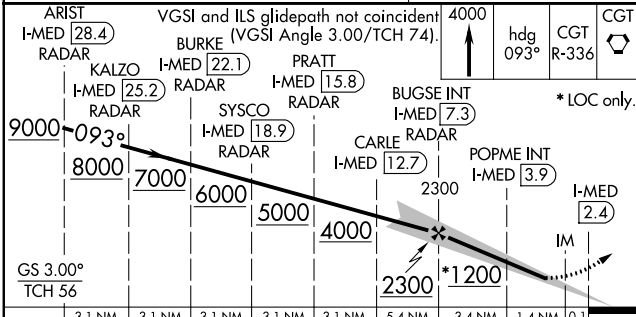
NORTHBROOK
113.0 OBK
Chan 77

CPDLC



MISSED APCH FIX

CHICAGO HEIGHTS
CGT 114.2 Chan 89



ELEV 680 TDZE 672

10L 10R 10C 28C 28R

7500 X 150
7967 X 150
13000 X 150
10800 X 200

093° 4.9 NM from FAF

HIRL all Rwy's TDZ/CL all Rwy's except 4L

FAF to MAP 4.9 NM

Knots	60	90	120	150	180
Min:Sec	4:54	3:16	2:27	1:58	1:38

CATEGORY	A	B	C	D
S-ILS 10L	872/18		200 (200-½)	
S-LOC 10L	1200/24 528 (600-½)		1200/55 528 (600-1)	
POPME FIX MINIMUMS (DUAL VOR RECEIVERS OR DME REQUIRED)				
S-LOC 10L	1080/24 408 (400-½)		1080/40 408 (400-¾)	

EC-3, 31 JAN 2019 to 28 FEB 2019

EC-3, 31 JAN 2019 to 28 FEB 2019