

LOC/DME I-AIC 110.5 Chan 42	APP CRS 273°	Rwy ldg TDZE Apt Elev	7782 654 680
---	------------------------	-----------------------------	---

ILS or LOC RWY 27L

CHICAGO O'HARE INTL (ORD)

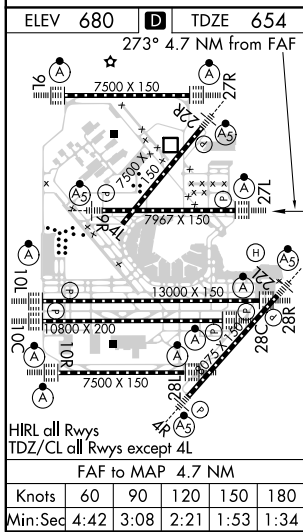
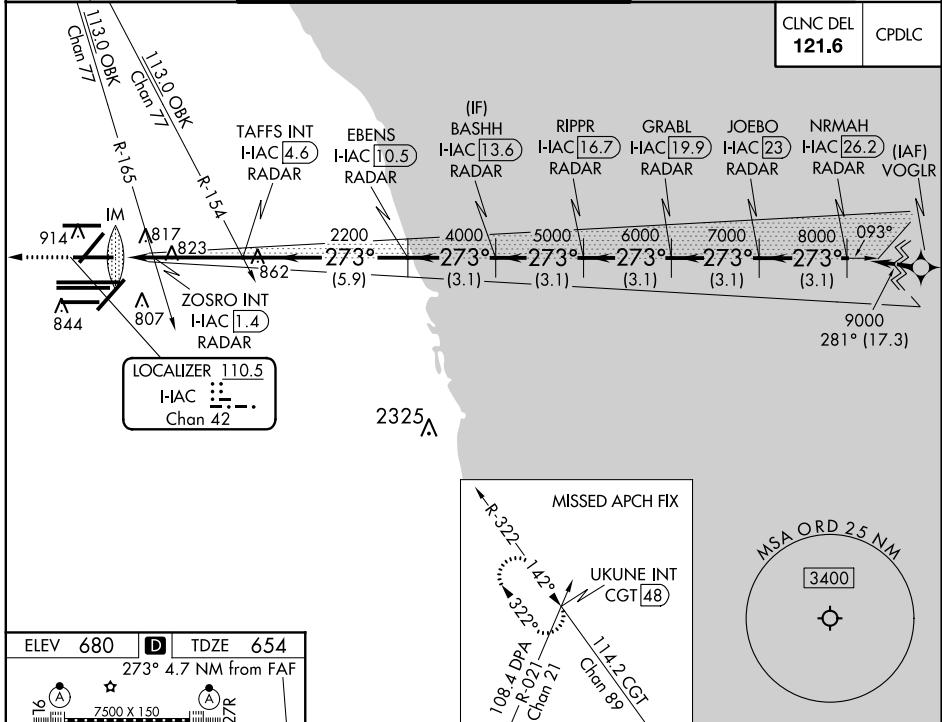
From VOGLR: RNAV 1-GPS required.
 Aircraft not GPS equipped - RADAR required for procedure entry.
 DME or RADAR required.

ALSF-2

MISSED APPROACH: Climb to 1200 then climbing right turn to 4000 on heading 295° and on CGT VORTAC R-322 to UKUNE INT/CGT 48 DME and hold.

Simultaneous approach authorized.

D-ATIS 135.4 282.225	CHICAGO APP CON 119.0 292.125	O'HARE TOWERS 128.15 348.0 (Rwy 9L/27R) 133.0 348.0 (10R/28L) 120.75 121.15 126.9 132.7 348.0 (CENTER)	GND CON (TWR CENTER) 124.125 (TWR NORTH) 121.75 (OBND) 118.05 (TWR SOUTH) 121.9 (IBND) 226.675 (ALL TWSR)
--	---	--	---



1200	4000	CGT R-322	UKUNE INT	VGSI and ILS glidepath not coincident (VGSI Angle 3.00/TCH 67).			
				BASHH I-AIC 13.6 RADAR	GRABL I-AIC 19.9 RADAR	JOEBO I-AIC 23 RADAR	NRMAH I-AIC 26.2 RADAR
*LOC only		TAFFS INT I-AIC 4.6 RADAR	EBENS I-AIC 10.5 RADAR	RIPPR I-AIC 16.7 RADAR			
I-AIC 0.1	ZOSRO INT I-AIC 1.4	2200	4000	5000	6000	7000	9000
0.1	1.4	3.2 NM	-5.9 NM	3.1 NM	3.1 NM	3.1 NM	3.1 NM
CATEGORY		A	B	C	D		
S-ILS 27L		854/18 200 (200-½)					
S-LOC 27L		1160/24	506 (500-½)	1160/55	506 (500-1)		
ZOSRO FIX MINIMUMS (DUAL VOR RECEIVERS OR DME REQUIRED)							
S-LOC 27L		1080/24	426 (400-½)	1080/40 426 (400-¾)			

EC-3, 31 JAN 2019 to 28 FEB 2019

EC-3, 31 JAN 2019 to 28 FEB 2019