

LOC/DME I-ABU <b>111.75</b> Chan 54 (Y)	APP CRS <b>273°</b>	Rwy Idg <b>7500</b> TDZE <b>664</b> Apt Elev <b>680</b>
---	------------------------	---

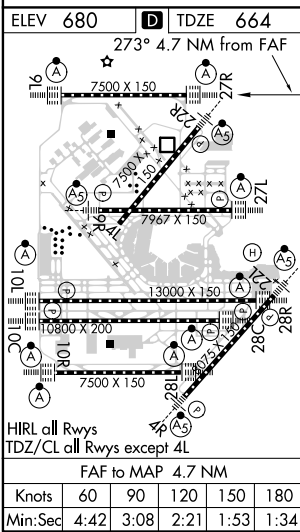
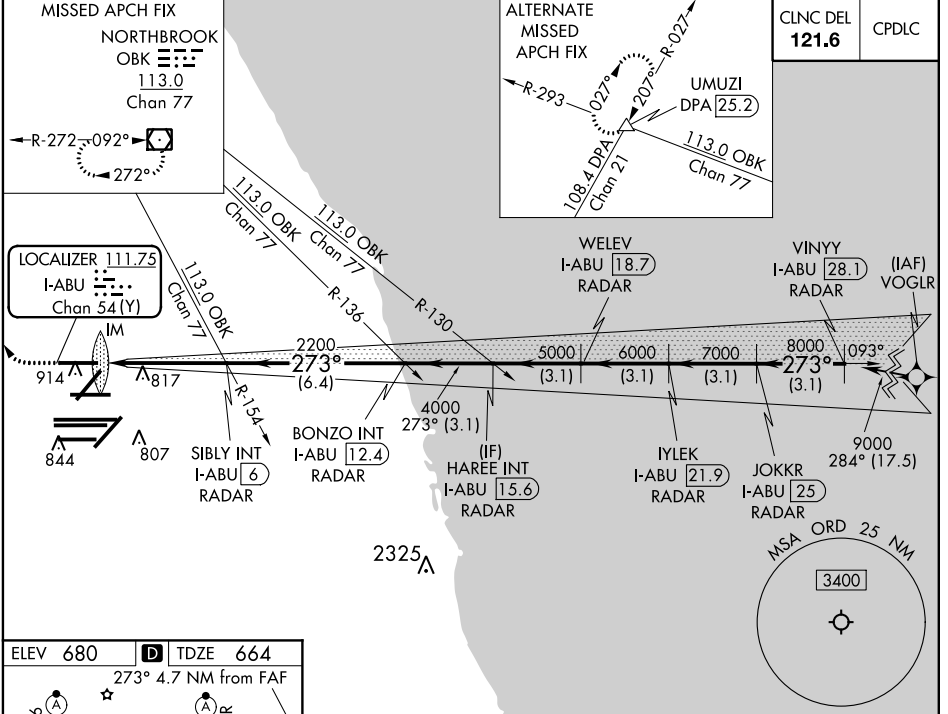
# ILS or LOC RWY 27R

CHICAGO O'HARE INTL (ORD)

RNAV-1 GPS or RADAR required for procedure entry. RADAR or DME required. **ALSf-2** MISSED APPROACH: Climb to 1100 then climbing right turn to 4000 direct OBK VOR/DME and hold, continue climb-in-hold to 4000.

Simultaneous approach authorized.

D-ATIS <b>135.4</b>	CHICAGO APP CON <b>119.0 292.125</b>	O'HARE TOWERS <b>128.15 348.0</b> (Rwy 9L/27R) <b>133.0 348.0</b> (10R/28L) <b>120.75 121.15 126.9 132.7 348.0</b> (CENTER)	GND CON (TWR NORTH) <b>124.125</b> (TWR SOUTH) <b>118.05</b> (ALL TWSR) <b>226.675</b>	TWR CENTER <b>121.75</b> (OBND) 121.9 (IBND)
------------------------	---	--	--	---



1100 4000 OBK VGSI and ILS glidepath not coincident.

\*LOC only.

	SIBLY INT I-ABU 6 RADAR	HAREE INT I-ABU 15.6 RADAR	WELEV I-ABU 18.7 RADAR	IYLEK I-ABU 21.9 RADAR	VINYY I-ABU 28.1 RADAR
	*I-ABU 2.6	BONZO INT I-ABU 12.4 RADAR	JOKKR I-ABU 25 RADAR		
	I-ABU 1.4				
	2200	2200	4000	5000	6000
	273°	273°	273°	273°	273°
	0.2	1.0	3.4	3.1	3.1
	3.4	6.4	3.1	3.1	3.1
CATEGORY	A	B	C	D	
S-ILS 27R	864/18 200 (200-1/2)				
S-LOC 27R	1120/24	456 (500-1/2)	1120/45	456 (500-7/8)	

GS 3.00° TCH 55

EC-3, 31 JAN 2019 to 28 FEB 2019

EC-3, 31 JAN 2019 to 28 FEB 2019