

LOC/DME I-VZE 108.95 Chan 26 (Y)	APP CRS 273°	Rwy Idg 10800 TDZE 651 Apt Elev 680
---	------------------------	--

ILS or LOC RWY 28C

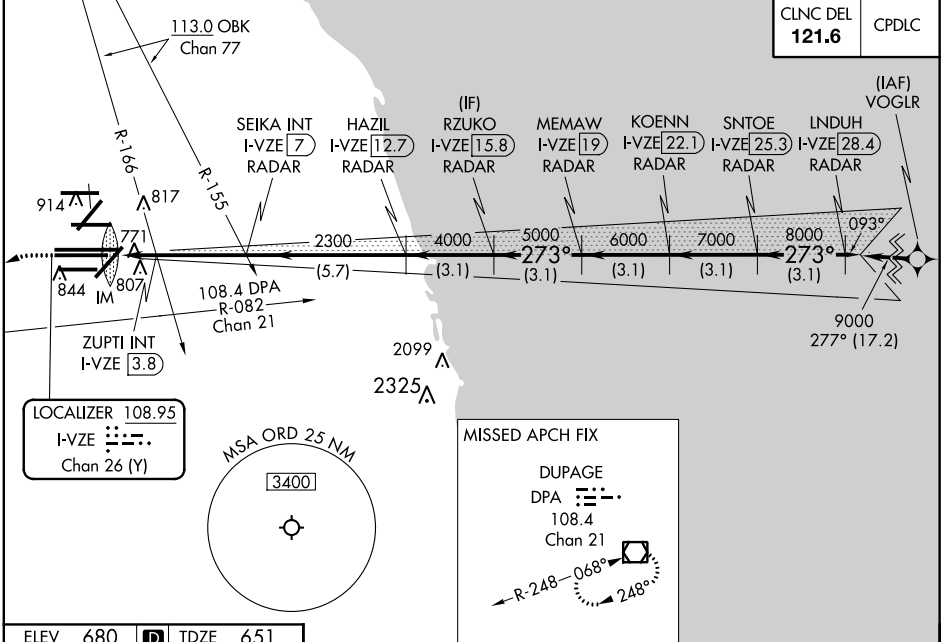
CHICAGO O'HARE INTL (ORD)

Aircraft not GPS equipped - RADAR required for procedure entry. DME or RADAR required.
From VOGLR: RNAV 1-GPS required.
Simultaneous approach authorized.

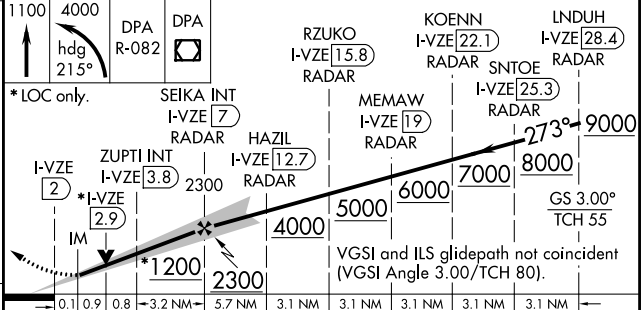
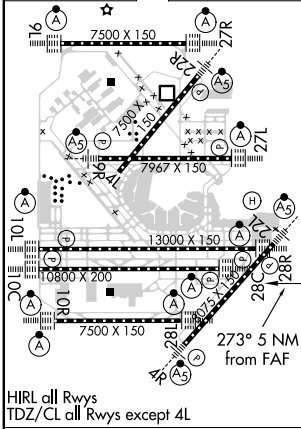
ALSf-2
MISSED APPROACH: Climb to 1100 then climbing left turn to 4000 on heading 215° and DPA VOR/DME R-082 to DPA VOR/DME and hold.

D-ATIS 135.4 282.225	CHICAGO APP CON 119.0 292.125	O'HARE TOWERS 128.15 348.0 (Rwy 9L/27R) 133.0 348.0 (10R/28L) 120.75 121.15 126.9 132.7 348.0 (CENTER)	GND CON (TWR CENTER) 124.125 (TWR NORTH) 121.75 (OBND) 118.05 (TWR SOUTH) 121.9 (IBND) 226.675 (ALL TWRs)
--	---	--	--

CNLC DEL 121.6	CPDLC
--------------------------	-------



ELEV 680	D	TDZE 651
----------	---	----------



CATEGORY	A	B	C	D
S-ILS 28C	851/18 200 (200-½)			
S-LOC 28C	1200/24	549 (600-½)	1200/60	549 (600-1¼)
ZUPTI FIX MINIMUMS (DUAL VOR RECEIVERS OR DME REQUIRED)				
S-LOC 28C	1040/24	389 (400-½)	1040/35	389 (400-¾)

EC-3, 31 JAN 2019 to 28 FEB 2019

EC-3, 31 JAN 2019 to 28 FEB 2019