

LOC I-FJU 110.1	APP CRS 045°	Rwy ldg TDZE Apt Elev	8075 661 680
---------------------------	------------------------	-----------------------------	---

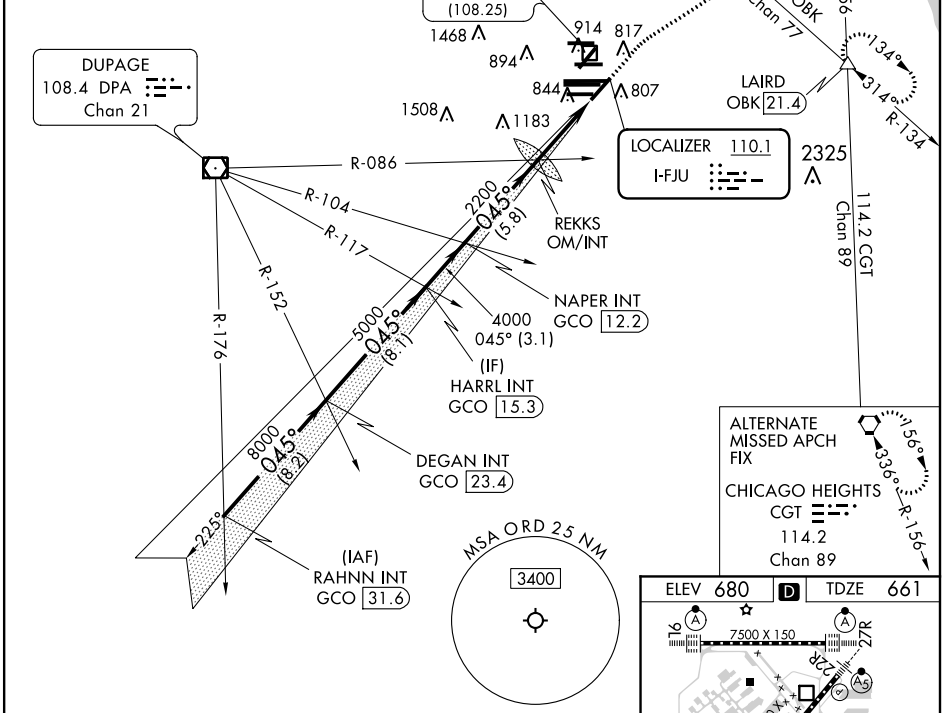
ILS or LOC RWY 4R

CHICAGO O'HARE INTL (ORD)

RADAR required for procedure entry.		MALSR	MISSED APPROACH: Climb to 1200 then climbing right turn to 4000 on heading 060° and OBK VOR/DME R-134 to LAIRD INT/OBK 21.4 DME and hold.
Simultaneous approach authorized.			

CHICAGO APP CON 119.0 292.125	O'HARE TOWERS 128.15 348.0 (Rwy 9L/27R) 133.0 348.0 (10R/28L) 348.0 (CENTER)	GND CON (TWR NORTH) 124.125 (TWR SOUTH) 118.05 (ALL TWRs) 226.675	(TWR CENTER) 121.75 (OBND) 121.9 (IBND)	CLNC DEL 121.6
---	--	---	---	--------------------------

D-ATIS 135.4 282.225
--

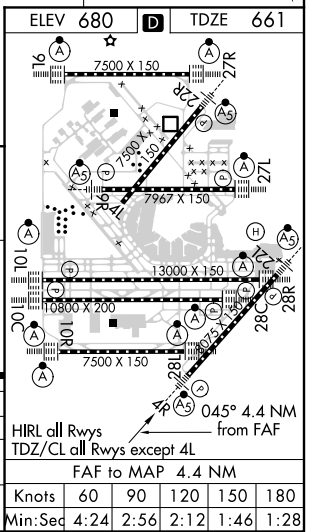


ALTERNATE MISSED APCH FIX

CHICAGO HEIGHTS
CGT 114.2
Chan 89

RAHNN INT GCO 31.6	DEGAN INT GCO 23.4	HARRL INT GCO 15.3	NAPER INT GCO 12.2	REKKS OM/INT	OBK R-134	LAIRD
VGS1 and ILS glidepath not coincident (VGS1 Angle 3.00/TCH 67). GS 3.00° TCH 52 11000 ft 8000 ft 045° 5000 ft 4000 ft 2200 ft hdg 060°						

CATEGORY	A	B	C	D
S-ILS 4R	861/18		200 (200-½)	
S-LOC 4R	1160/24 499 (500-½)		1160/50 499 (500-1)	
CIRCLING	1220-1 540 (600-1)		1220-1½ 1460-2½ 540 (600-1½) 780 (800-2½)	



EC-3, 31 JAN 2019 to 28 FEB 2019

EC-3, 31 JAN 2019 to 28 FEB 2019