

ILS PRM RWY 10C (SA CAT I) (CLOSE PARALLEL) CHICAGO O'HARE INTL (ORD)

LOC/DME I-SXH 108.95 Chan 26(Y)	APP CRS 093°	Rwy Ldg 10540 TDZE 669 Apt Elev 680
--	------------------------	--

RNAV 1-GPS or RADAR required for procedure entry. DME or RADAR required.
From GIBNS: RNAV-1 GPS required.

▽ Requires specific OPSPec, MSPEC, or LOA approval and use of HUD to DH. Simultaneous approach authorized. Use of FD or AP required during simultaneous operations. Dual VHF comm required. See additional requirements on AAUP.

ALSF-2

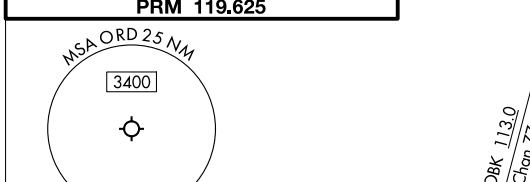
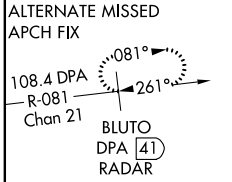
MISSED APPROACH: Climb to 4000 on heading 093° and CGT VORTAC R-336 to CGT VORTAC and hold.

D-ATIS
135.4

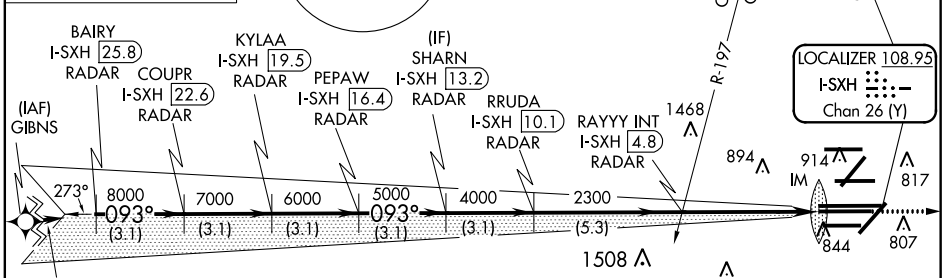
CHICAGO APP CON
282.225 119.0 292.125

O'HARE TOWERS
128.15 348.0 (Rwy 9L/27R) **133.0 348.0** (10R/28L)
120.75 121.15 126.9 132.7 348.0 (CENTER)
PRM 119.625

GND CON (TWR CENTER) **121.75** (OBND)
(TWR NORTH) **121.9** (IBND)
(TWR SOUTH) **226.675** (ALL TWRs)



CNLC DEL **121.6** CPDLC



EC-3, 31 JAN 2019 to 28 FEB 2019

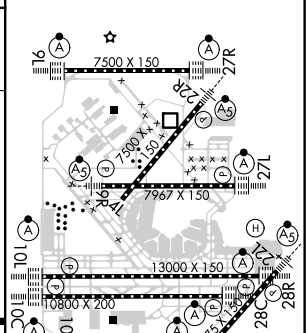
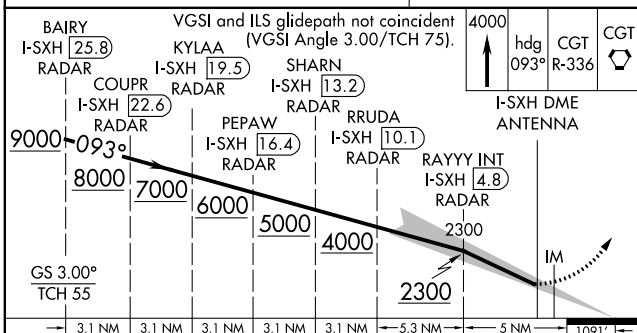
EC-3, 31 JAN 2019 to 28 FEB 2019



MISSED APCH FIX

CHICAGO HEIGHTS
CGT
114.2
Chan 89

ELEV 680 **D** TDZE 669



→ 3.1 NM	3.1 NM	3.1 NM	3.1 NM	3.1 NM	5.3 NM	5 NM	1091'
CATEGORY	A	B	C	D			
S-ILS 10C	RA 148/14			150 DA 819			

**SA CATEGORY I ILS - SPECIAL AIRCREW
& AIRCRAFT CERTIFICATION REQUIRED**

HIRL all Rwys
TDZ/CL all Rwys except 4L