

LOC/DME I-BYW 110.9 Chan 46	APP CRS 091°	Rwy Ldg TDZE 7500 680 Apt Elev 680
---	------------------------	--

ILS PRM Y RWY 10R (CLOSE PARALLEL)

CHICAGO-O'HARE INTL (ORD)

RNAV 1-GPS or RADAR required for procedure entry. DME or RADAR required.
From GIBNS: RNAV-1 GPS required.

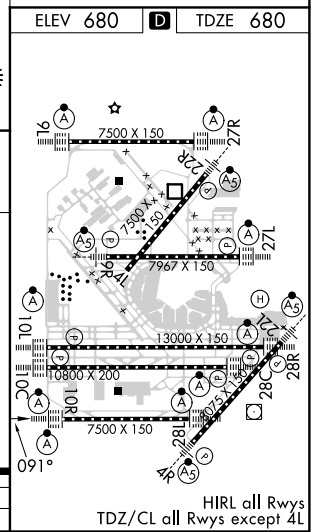
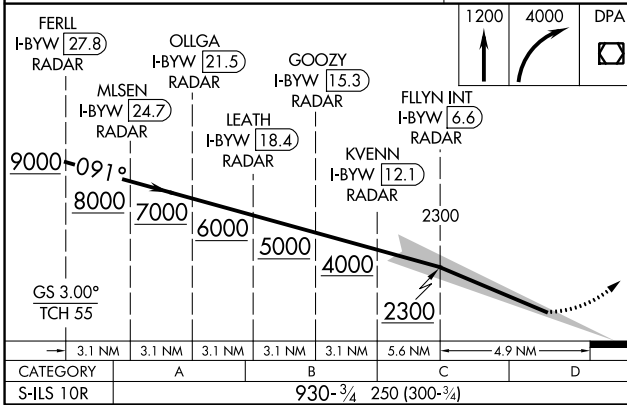
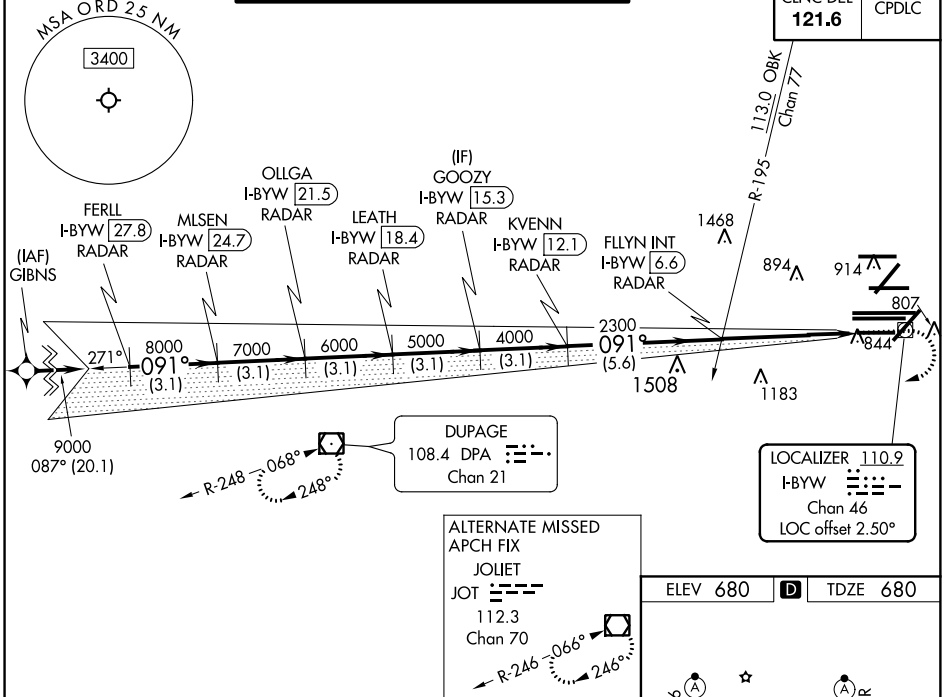
ALSIF-2

MISSED APPROACH: Climb to 1200 then climbing right turn to 4000 direct DPA VOR/DME and hold.

Simultaneous approach authorized. Use of FD or AP required during simultaneous operations. Dual VHF Comm requirements. See additional requirements on AAUP. Inop table does not apply to S-ILS 10R all Cats.
Rwy 10R helicopter visibility reduction below 3/4 SM NA.

D-ATIS 135.4 282.225	CHICAGO APP CON 119.0 292.125	O'HARE TOWERS 128.15 348.0 (Rwy 9L/27R) 120.75 121.15 126.9 132.7 348.0 (CENTER) PRM 128.05	GND CON (TWR CENTER) 124.125 (TWR NORTH) 118.05 (TWR SOUTH) 226.675 (ALL TWRs)	(TWR CENTER) 121.75 (OBND) 121.9 (IBND)
--	---	---	--	---

CNLC DEL 121.6	CPDLC
--------------------------	-------



EC-3, 31 JAN 2019 to 28 FEB 2019

EC-3, 31 JAN 2019 to 28 FEB 2019