

LOC/DME I-HZJ 110.75 Chan 44 (Y)	APP CRS 094°	Rwy Idg TDZE Apt Elev	7500 680 680
---	------------------------	-----------------------------	---

ILS Z RWY 10R (CAT II & III)

CHICAGO-O'HARE INTL (ORD)

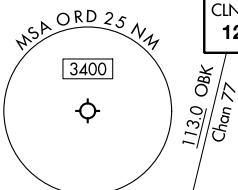
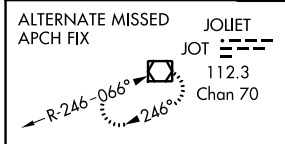
RNAV 1-GPS or RADAR required for procedure entry. DME or RADAR required.
From GIBNS: RNAV-1 GPS required.

ALSF-2

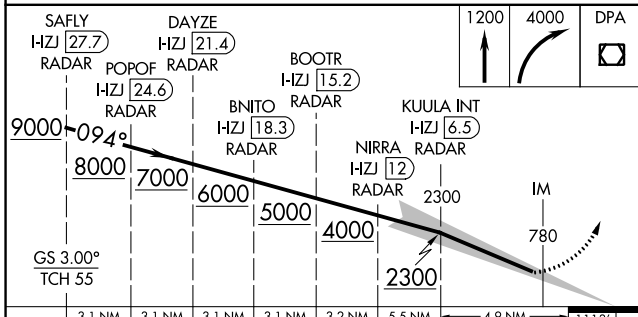
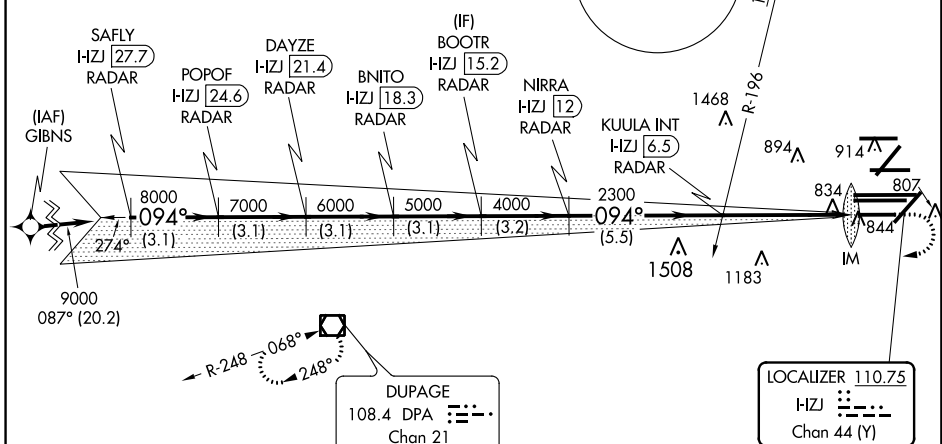
MISSED APPROACH: Climb to 1200 then climbing right turn to 4000 direct DPA VOR/DME and hold.

Simultaneous approach authorized. CAT II: RVR 1000 authorized with specific OPSPEC, MSPEC, or LOA approval and use of autoland or HUD to touchdown.

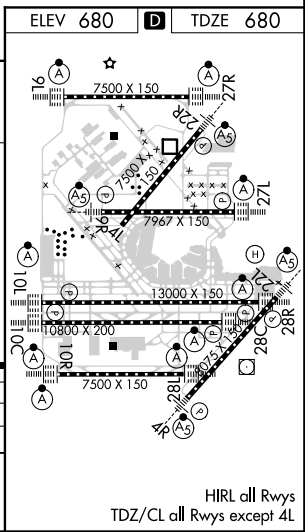
D-ATIS 135.4 282.225	CHICAGO APP CON 119.0 292.125	O'HARE TOWERS 128.15 348.0 (Rwy 9L/27R) 120.75 121.15 126.9 132.7 348.0 (CENTER)	GND CON (TWR CENTER) 121.75 (OBND) (TWR NORTH) 121.9 (IBND) (TWR SOUTH) 121.9 (IBND) 226.675 (ALL TWRS)
--	---	---	--



CLNC DEL 121.6	CPDLC
--------------------------	-------



CATEGORY	A	B	C	D
S-ILS 10R	CAT II RA 110/12		100 DA 780	
S-ILS 10R	CAT III RVR 06			



CATEGORY II & III ILS - SPECIAL AIRCREW & AIRCRAFT CERTIFICATION REQUIRED

EC-3, 31 JAN 2019 to 28 FEB 2019

EC-3, 31 JAN 2019 to 28 FEB 2019

HIRL all Rwys
TDZ/CL all Rwys except 4L