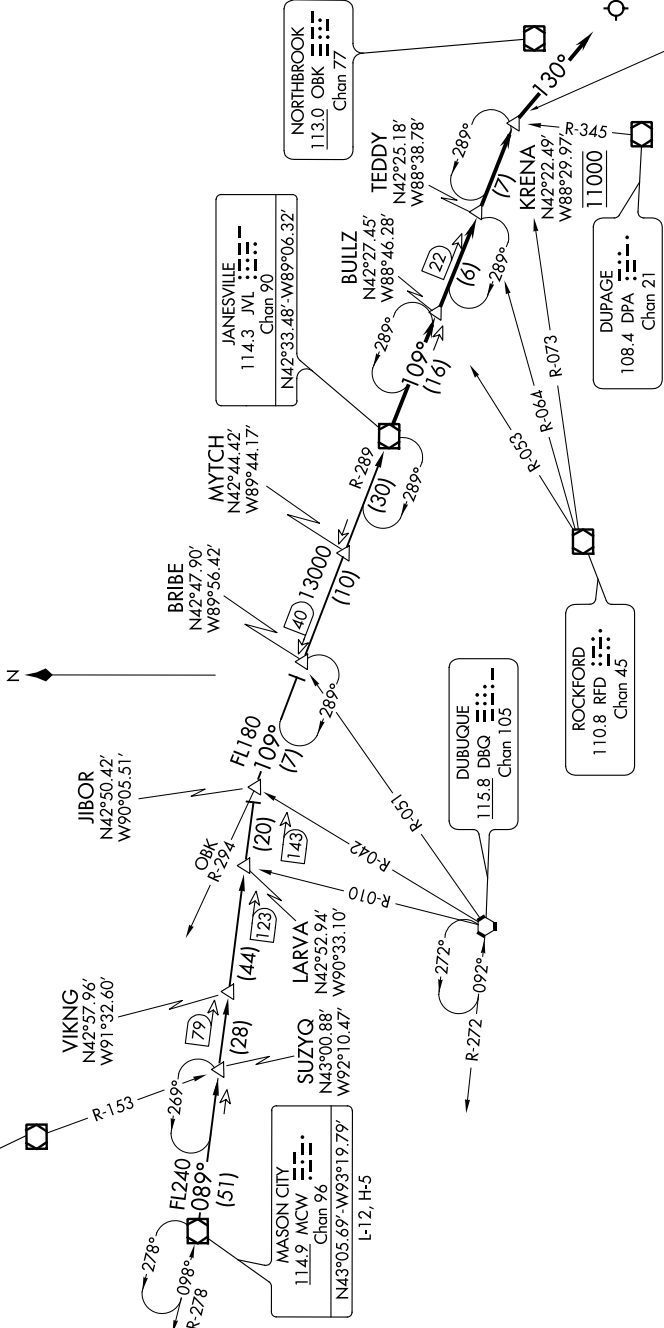


D-ATIS
135.4 282.223
CHICAGO APP CON
119.0 292.125



ARRIVAL ROUTE DESCRIPTION

MASON CITY TRANSITION [MCW,JVL9]: From over MCW VOR/DME on MCW R-089 to JIBOR, then on JVL R-289 to JVL VOR/DME, thence....
from over JVL VOR/DME on JVL R-109 to cross KRENA at 11000, then on heading 130°. Expect radar vectors to final approach course.

NOTE: RADAR required.
 NOTE: DME required.
 NOTE: Chart not to scale.

EC-3, 31 JAN 2019 to 28 FEB 2019

EC-3, 31 JAN 2019 to 28 FEB 2019