

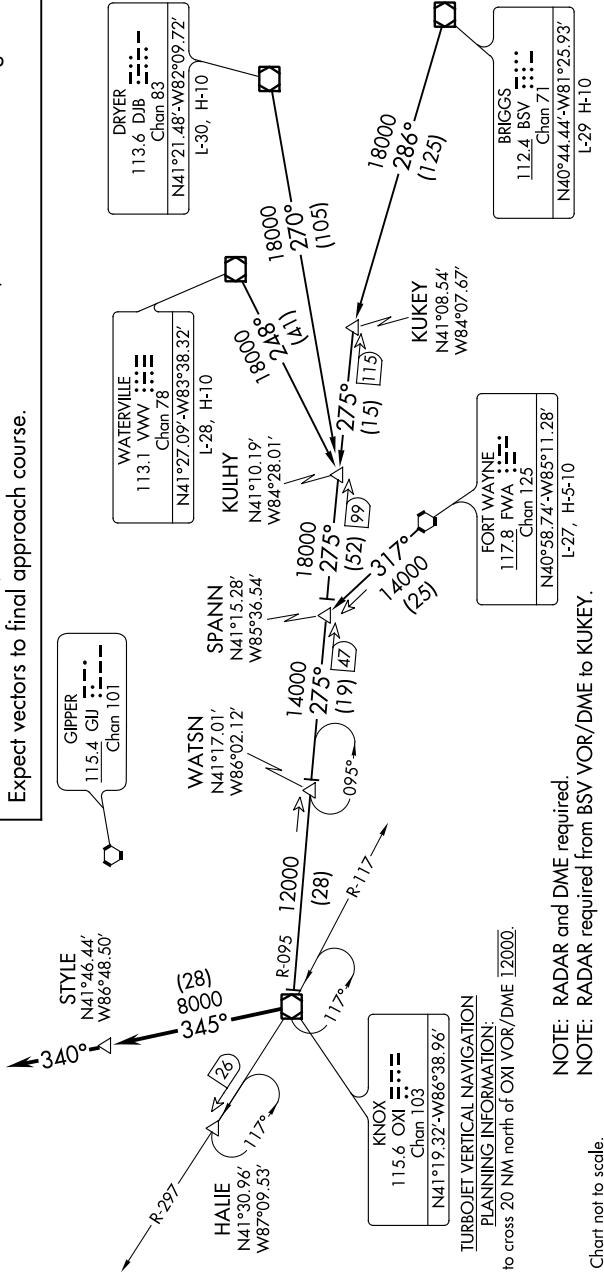
EC-3, 31 JAN 2019 to 28 FEB 2019

D-ATIS
135.4 282.225
CHICAGO APP CON
119.0 292.125

ARRIVAL ROUTE DESCRIPTION

BRIGGS TRANSITION (BSV.OX17): From over BSV VOR/DME on BSV R-286 to KUIKEY, then on OXI R-095 to OXI VOR/DME. Thence....
DRYER TRANSITION (DJB.OX17): From over DJB VOR/DME on DJB R-270 to KULHY, then on OXI R-095 to OXI VOR/DME. Thence....
FORT WAYNE TRANSITION (FWA.OX17): From over FWA VORTAC on FWA R-317 to SPANN, then on OXI R-095 to OXI VOR/DME. Thence....
WATERVILLE TRANSITION (VVV.OX17): From over VVV VOR/DME on VVV R-248 to KULHY, then on OXI R-095 to OXI VOR/DME. Thence....

...from over OXI VOR/DME on OXI R-345 to STYLE, then on 340° heading. Expect vectors to final approach course.



TURBOJET VERTICAL NAVIGATION

115.6 OXI Chan 103

Expect to cross 20 NM north of OXI VOR/DME 12000.

FORT WAYNE
117.8 FWA
Chan 125
N40°58.74'-W85°11.28'
L-27, H-5-10

NOTE: RADAR and DME required.
 NOTE: RADAR required from BSV VOR/DME to KUIKEY.

NOTE: Chart not to scale.

EC-3, 31 JAN 2019 to 28 FEB 2019