

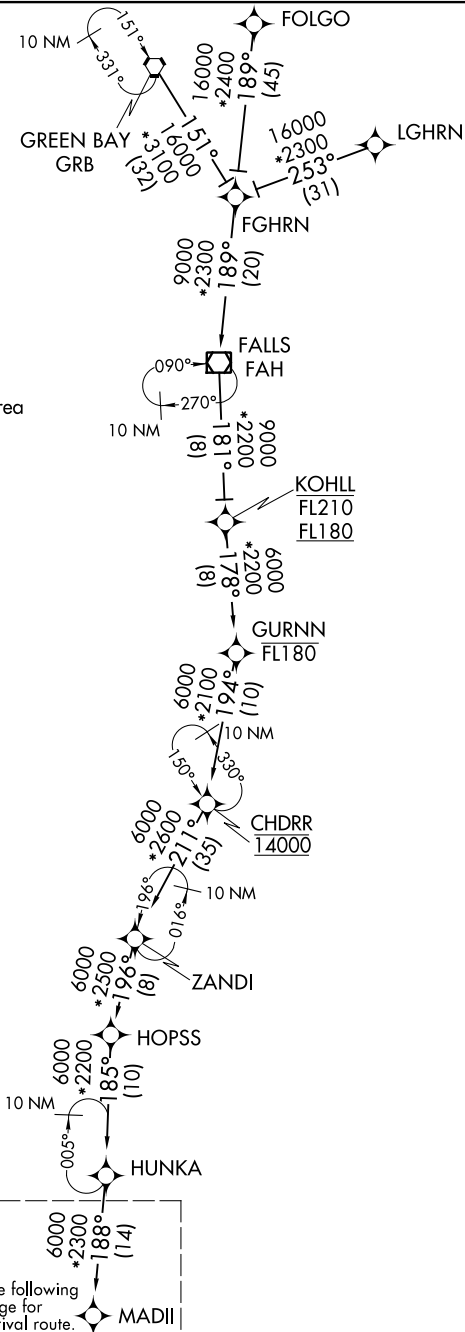
MADII FOUR ARRIVAL (RNAV) Transition Routes

CHICAGO O'HARE INTL (ORD)  
CHICAGO, ILLINOIS

D-ATIS  
135.4 282.225  
CHICAGO APP CON  
119.0 292.125

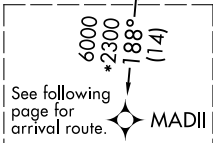
- NOTE: RADAR required.
- NOTE: RNAV 1.
- NOTE: DME/DME/IRU or GPS required.
- NOTE: ZANDI transition: For Milwaukee terminal area departures only.

- CHDRR TRANSITION (CHDRR.MADII4):
- FALLS TRANSITION (FAH.MADII4):
- FGHRN TRANSITION (FGHRN.MADII4):
- FOLGO TRANSITION (FOLGO.MADII4):
- GREEN BAY TRANSITION (GRB.MADII4):
- KOHLL TRANSITION (KOHLL.MADII4):
- LGHRN TRANSITION (LGHRN.MADII4):
- ZANDI TRANSITION (ZANDI.MADII4):



(CONTINUED ON FOLLOWING PAGE)

NOTE: Chart not to scale.



EC-3, 31 JAN 2019 to 28 FEB 2019

EC-3, 31 JAN 2019 to 28 FEB 2019