


WAAS CH 81934 W10B	APP CRS 093°	Rwy Idg 10540 TDZE 669 Apt Elev 680
--	------------------------	--

RNAV (GPS) RWY 10C

CHICAGO-O'HARE INTL (ORD)

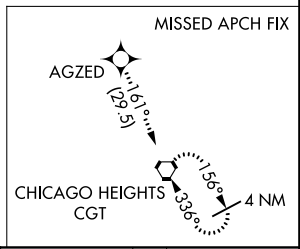
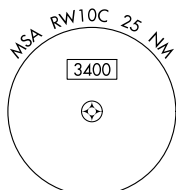
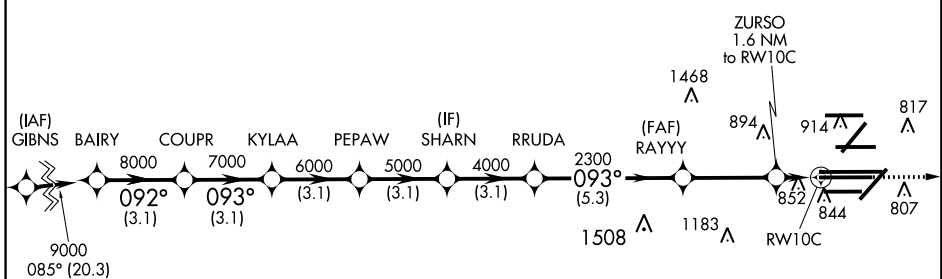
▼ DME/DME RNP-0.3 NA. Simultaneous approach authorized. For uncompensated Baro-VNAV systems, LNAV/VNAV NA below -19°C (-2°F) or above 54°C (130°F). LNAV procedure NA during simultaneous operations. Use of FD or AP providing RNAV track guidance required during simultaneous operations.

ALSF-2  MISSED APPROACH: Climb to 4000 direct AGZED and on track 161° to CGT VORTAC and hold.

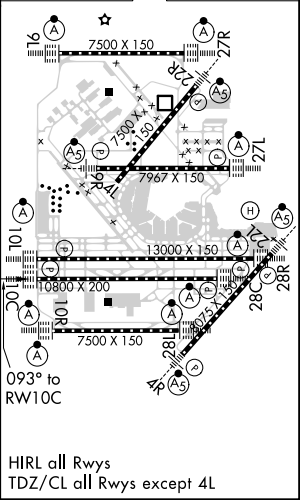
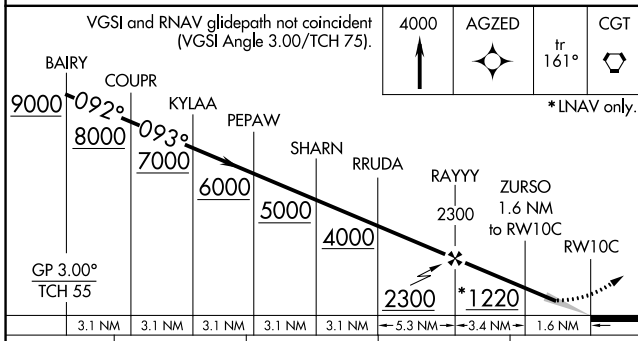
D-ATIS 135.4 282.225	CHICAGO APP CON 119.0 292.125	O'HARE TOWERS 128.15 348.0 (Rwy 9L/27R) 133.0 348.0 (10R/28L) 120.75 121.15 126.9 132.7 348.0 (CENTER)	GND CON (TWR NORTH) 124.125 (TWR SOUTH) 118.05 (ALL TWRs) 226.675	(TWR CENTER) 121.75 (OBND) (TWR INBD) 121.9 (IBND)
--	---	--	--	---

RADAR REQUIRED

CLNC DEL 121.6	CPDLC
--------------------------	-------



ELEV 680	D	TDZE 669
----------	----------	----------



CATEGORY	A		B		C		D	
LPV DA	869/18		200 (200-½)					
LNAV/VNAV DA	1056/40		387 (400-¾)					
LNAV MDA	1120/24	451 (500-½)	1120/45	451 (500-¾)				

EC-3, 31 JAN 2019 to 28 FEB 2019

EC-3, 31 JAN 2019 to 28 FEB 2019