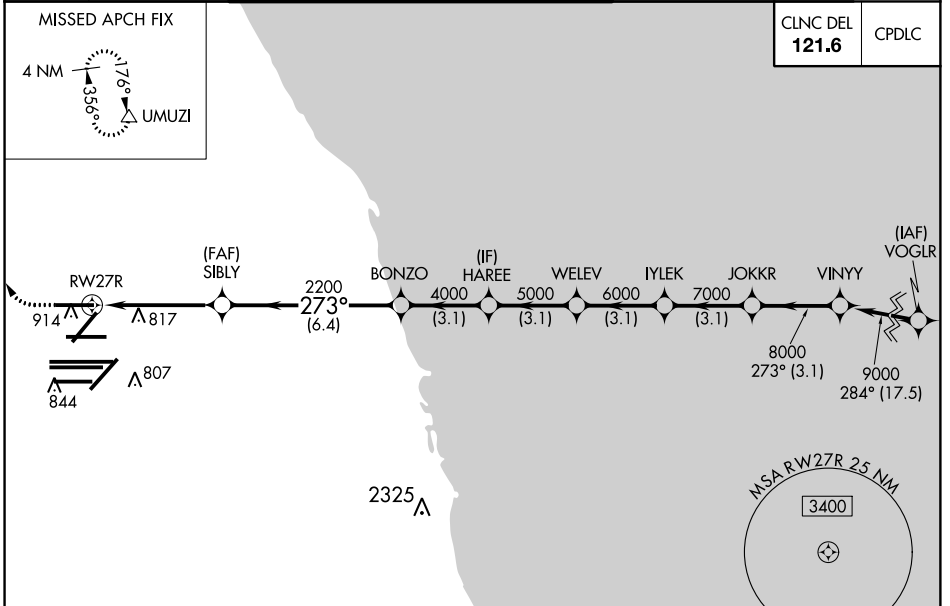


WAAS CH 69508 W27B	APP CRS 273°	Rwy Idg TDZE Apt Elev	7500 664 680
--	------------------------	-----------------------------	---

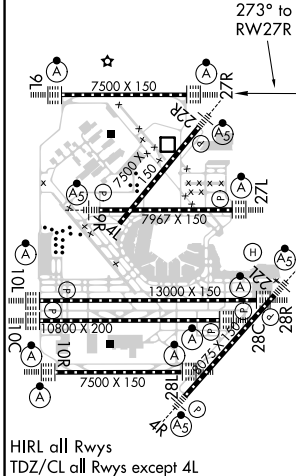
RNAV (GPS) RWY 27R

CHICAGO O'HARE INTL (ORD)

RNP APCH.		ALSIF-2		MISSED APPROACH: Climb to 1100 then climbing right turn to 4000 direct UMUZI and hold.	
RADAR required for procedure entry.		<p>▼ For uncompensated Baro-VNAV systems, procedure NA below -19°C or above 54°C. Simultaneous approach authorized. LNAV procedure NA during simultaneous operations. Use of FD or AP providing RNAV track guidance required during simultaneous operations.</p>			
D-ATIS 135.4	CHICAGO APP CON 119.0 292.125	O'HARE TOWERS 128.15 348.0 (Rwy 9L/27R) 133.0 348.0 (10R/28L) 124.125 (TWR CENTER) 118.05 (TWR SOUTH) 226.675 (ALL TWRs)		GND CON (TWR CENTER) 121.75 (OBND) 121.9 (IBND)	



ELEV 680	D	TDZE 664
----------	----------	----------



1100	4000	UMUZI	VGSi and RNAV glidepath not coincident.		JOKKR	VINNY		
* LNAV only.								
* 1.2 NM to RWY 27R		SIBLY 2200	BONZO 4000	HAREE 5000	WELEV 6000	IYLEK 7000	JOKKR 8000	VINNY 9000
RWY 27R		6.4 NM		3.1 NM	3.1 NM	3.1 NM	3.1 NM	3.1 NM
GP 3.00°							TCH 55	
CATEGORY	A		B		C		D	
LPV DA	864/18		200 (200-½)					
LNAV/VNAV DA	961/24		297 (300-½)					
LNAV MDA	1120/24 456 (500-½)		1120/45 456 (500-¾)					

EC-3, 31 JAN 2019 to 28 FEB 2019

EC-3, 31 JAN 2019 to 28 FEB 2019