

WAAS CH 42634 W28B	APP CRS 273°	Rwy Idg 10800 TDZE 651 Apt Elev 680
--	------------------------	--

RNAV (GPS) RWY 28C

CHICAGO O'HARE INTL (ORD)

▼ DME/DME RNP-0.3 NA. Simultaneous approach authorized. For uncompensated Baro-VNAV systems, LNAV/VNAV NA below -19°C (-2°F) or above 54°C (130°F). LNAV procedure NA during simultaneous operations. Use of FD or AP providing RNAV track guidance required during simultaneous operations. For inop ALSF, increase LNAV Cat C and D visibility to RVR 6000.

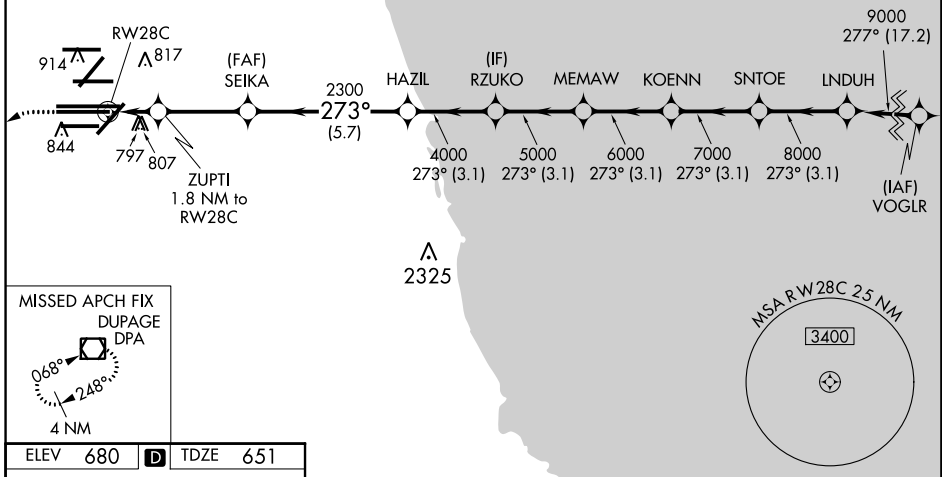


MISSED APPROACH:
Climb to 1100 then
climbing left turn to
4000 direct DPA
VOR/DME and hold.

D-ATIS 135.4	CHICAGO APP CON 119.0 292.125	O'HARE TOWERS 128.15 348.0 (Rwy 9L/27R) 133.0 348.0 (10R/28L) 120.75 121.15 126.9 132.7 348.0 (CENTER)				GND CON (TWR NORTH) 124.125 (TWR SOUTH) 118.05 (ALL TWRs) 226.675	(TWR CENTER) 121.75 (OBND) 121.9 (IBND)
------------------------	--	--	--	--	--	---	---

CLNC DEL 121.6	CPDLC
--------------------------	-------

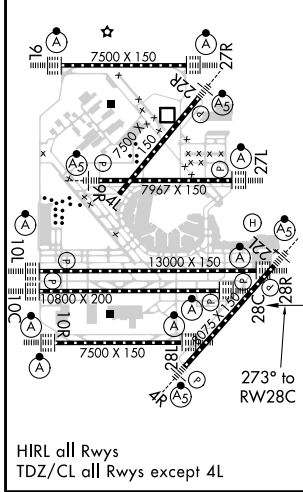
RADAR REQUIRED



EC-3, 31 JAN 2019 to 28 FEB 2019

EC-3, 31 JAN 2019 to 28 FEB 2019

ELEV 680	D	TDZE 651
-----------------	----------	-----------------



1100	4000	DPA	VGSi and RNAV glidepath not coincident (VGSi Angle 3.00/TCH 80).			
*LNAV only.						
ZUPTI 1.8 NM to RW28C	SEIKA 2300	HAZIL	RZUKO	MEMAW	KOENN	SNTOE LNDUH 273° 9000
*1 NM to RW28C	*1260	4000	5000	6000	7000	8000
GP 3.00° TCH 55						
1 NM	0.8	3.2 NM	5.7 NM	3.1 NM	3.1 NM	3.1 NM
CATEGORY	A	B		C		D
LPV DA	DA	851/18		200 (200-½)		
LNAV/VNAV DA	DA	1094/50		443 (500-1)		
LNAV MDA	1060/24	409 (400-½)		1060/40		409 (400-¾)