

WAAS CH <b>62905</b> <b>W04B</b>	APP CRS <b>042°</b>	Rwy Idg TDZE Apt Elev	<b>7500</b> <b>658</b> <b>672</b>
--	------------------------	-----------------------------	---

# RNAV (GPS) RWY 4L

CHICAGO-O'HARE INTL (ORD)

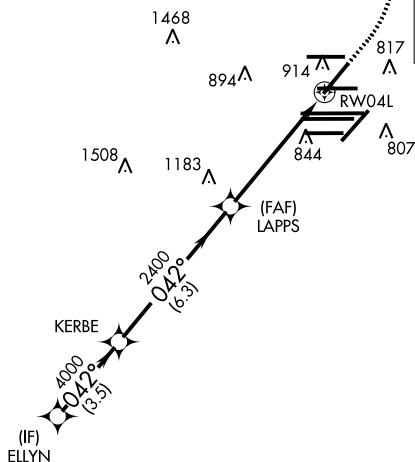
▼ For uncompensated Baro-VNAV systems, LNAV/VNAV NA below -22°C (-7°F) or above 39°C (102°F). Simultaneous approach authorized with Rwy 4R. DME/DME RNP-0.3 NA. LNAV procedure NA during simultaneous operations. Use of FD or AP providing RNAV track guidance required during simultaneous operations.

MISSED APPROACH: Climb to 1300 then climbing left turn to 4000 direct OBK VOR/DME and hold.

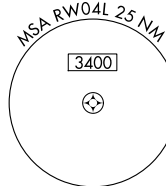
CHICAGO APP CON <b>119.0 292.125</b>	O'HARE TOWERS <b>128.15 348.0</b> (Rwy 9L/27R) <b>133.0 348.0</b> (10R/28L) <b>126.9 348.0</b> (CENTER)	GND CON (TWR NORTH) <b>124.125</b> (TWR SOUTH) <b>118.05</b> (ALL TWRs) <b>226.675</b>	(TWR CENTER) <b>121.75</b> (OBND) (IBND) <b>121.9</b>	CLNC DEL <b>121.6</b>
---	--	--	--	--------------------------

D-ATIS <b>135.4</b> <b>282.225</b>
--

## RADAR REQUIRED

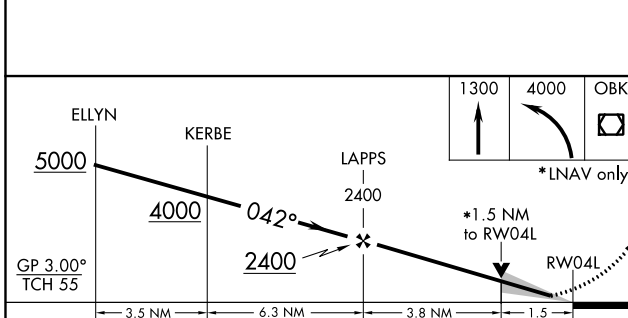


CPDLC



EC-3, 31 JAN 2019 to 28 FEB 2019

EC-3, 31 JAN 2019 to 28 FEB 2019



ELEV 672	<b>D</b>	TDZE 658
----------	----------	----------

042° to RWY 04L  
HIRL all Rwy's  
TDZL Rwy 15  
TDZ/CL all Rwy's except 4L, 15 and 33