

WAAS CH 99508 W09B	APP CRS 093°	Rwy ldg 7500 TDZE 668 Apt Elev 680
--	------------------------	---

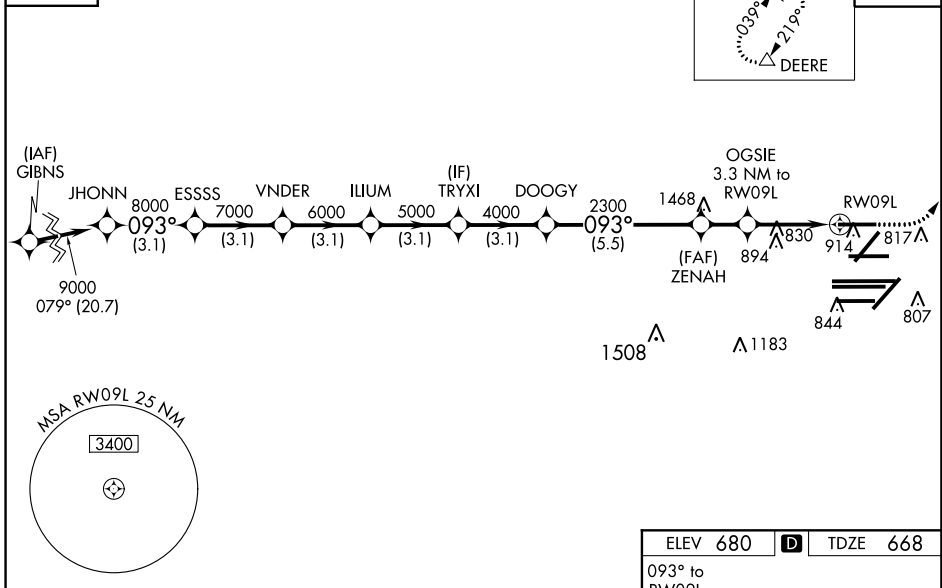
RNAV (GPS) RWY 9L

CHICAGO O'HARE INTL (ORD)

PBN APCH. RADAR required for procedure entry.		ALSIF-2 	MISSED APPROACH: Climb to 1100 then climbing left turn to 4000 direct DEERE and hold.
▼ For uncompensated Baro-VNAV systems, procedure NA below -19°C or above 54°C. Simultaneous approach authorized. LNAV procedure NA during simultaneous operations. Use of FD or AP providing RNAV track guidance required during simultaneous operations. For inop ALSF, increase LNAV/VNAV all Cats visibility to RVR 5000 and LNAV Cts C/D visibility to RVR 6000.			

CHICAGO APP CON 119.0 292.125	O'HARE TOWERS 128.15 348.0 (Rwy 9L/27R) 133.0 348.0 (10R/28L) 120.75 121.15 126.9 132.7 348.0 (CENTER)	GND CON (TWR NORTH) 124.125 (TWR SOUTH) 118.05 (ALL TWRs) 226.675	(TWR CENTER) 121.75 (OBND) (IBND) 121.9	CLNC DEL 121.6
--	--	---	--	--------------------------

D-ATIS 135.4 282.225	MISSED APCH FIX 4 NM 	CPDLC
--	-----------------------------	-------



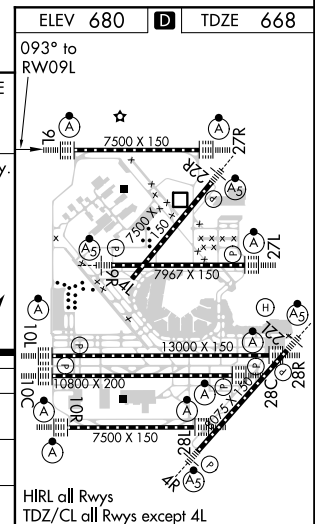
VGSI and RNAV glidepath not coincident.

JHONN	ESSSS	VNDER	ILIUM	TRYXI	DOOGY	ZENAH	OGSIE	RW09L
9000	8000	7000	6000	5000	4000	2300	1760	
3.1 NM	3.1 NM	3.1 NM	3.1 NM	3.1 NM	5.5 NM	1.7 NM	2.2 NM	1.1 NM
GP 3.00° TCH 55								
CATEGORY	A		B		C		D	
LPV DA			868/18		200 (200-½)			
LNAV/VNAV DA			989/30		321 (400-¾)			
LNAV MDA	1080/24		412 (500-½)		1080/40		412 (500-¾)	

*1100 4000 DEERE

*1100 only.

*1.1 NM to RW09L



EC-3, 31 JAN 2019 to 28 FEB 2019

EC-3, 31 JAN 2019 to 28 FEB 2019