

WAAS CH 78204 W09A	APP CRS 093°	Rwy ldg TDZE 660 Apt Elev 680	7709
--	------------------------	---	-------------

RNAV (GPS) RWY 9R

CHICAGO O'HARE INTL (ORD)

▽ For uncompensated Baro-VNAV systems, LNAV/VNAV NA below -19°C (-2°F) or above 54°C (130°F). Simultaneous approach authorized. DME/DME RNP-0.3 NA. LNAV procedure NA during simultaneous operations. Use of FD or AP providing RNAV track guidance required during simultaneous operations. For inop MALS, increase LNAV Cat C/D visibility to 1½ mile.

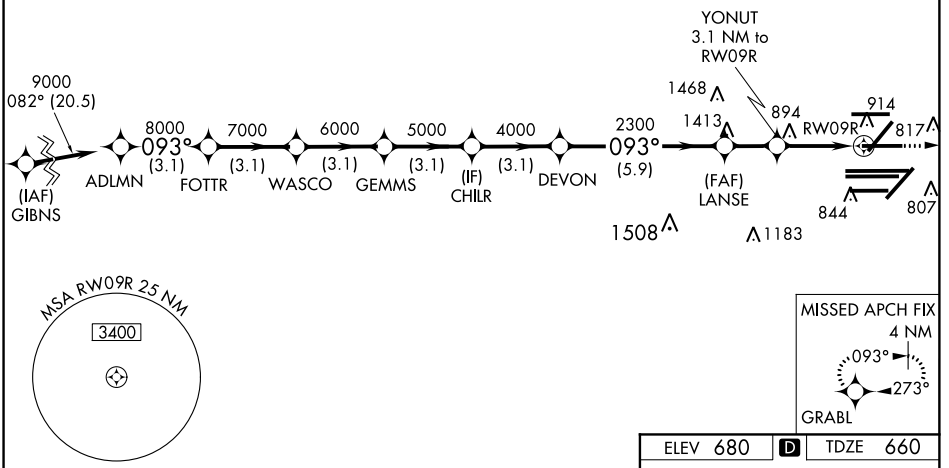


MISSED APPROACH:
Climb to 4000 direct GRABL and hold.

D-ATIS 135.4 282.225	CHICAGO APP CON 119.0 292.125	O'HARE TOWERS 128.15 348.0 (Rwy 9L/27R) 133.0 348.0 (10R/28L) 120.75 121.15 126.9 132.7 348.0 (CENTER)	GND CON (TWR NORTH) 124.125 (TWR SOUTH) 118.05 (ALL TWRs) 226.675	(TWR CENTER) 121.75 (OBND) (IBND) 121.9
--	--	---	---	--

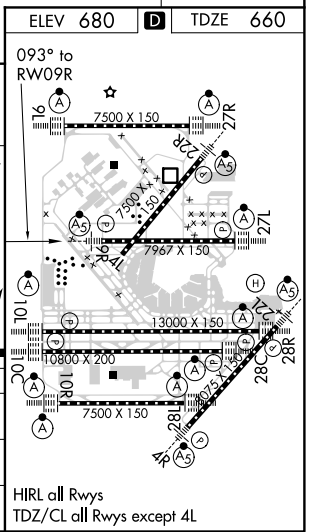
RADAR REQUIRED

CLNC DEL 121.6	CPDLC
--------------------------	-------



VGSI and RNAV glidepath not coincident (VGSI Angle 3.00/TCH 74).

ADLMN	FOTTR	WASCO	GEMMS	CHILR	DEVON	LANSE	YONUT	3.1 NM to RWY 9R
9000	8000	7000	6000	5000	4000	2300	1700	
GP 3.00° TCH 57								
3.1 NM		3.1 NM		3.1 NM		3.1 NM		
A		B		C		D		
LPV DA	860/18			200 (200-½)				
LNAV/VNAV DA	1047/40			387 (400-¾)				
LNAV MDA	1160/24		500 (500-½)		1160/50		500 (500-1)	



EC-3, 31 JAN 2019 to 28 FEB 2019

EC-3, 31 JAN 2019 to 28 FEB 2019