

(CLOSE PARALLEL)

CHICAGO O'HARE INTL (ORD)

WAAS CH 53639 W28B	APP CRS 273°	Rwy Idg 10800 TDZE 651 Apt Elev 680
--	------------------------	--

▼ For uncompensated Baro-VNAV systems, LNAV/VNAV NA below -19°C (-2°F) or above 54°C (130°F). DME/DME RNP-0.3 NA. Use of FD or AP providing RNAV track guidance required during simultaneous operations. Simultaneous approach authorized. Dual VHF comm required. See additional requirements on AAUP.

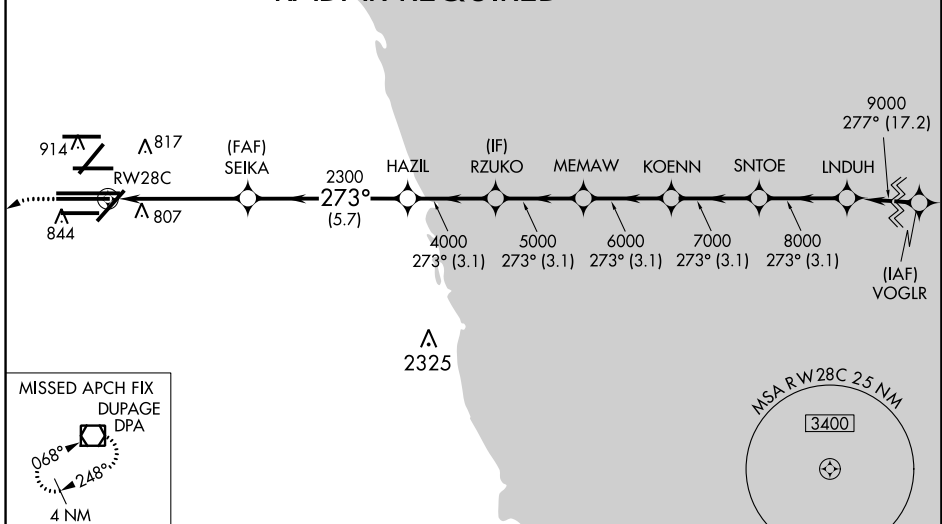


MISSED APPROACH:
Climb to 1100 then climbing left turn to 4000 direct DPA VOR/DME and hold.

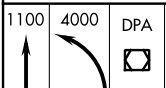
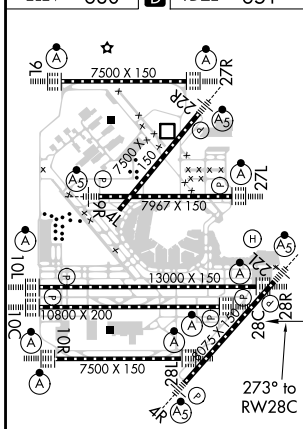
D-ATIS 135.4 282.225	CHICAGO APP CON 119.0 292.125	O'HARE TOWERS 128.15 348.0 (Rwy 9L/27R) 133.0 348.0 (10R/28L) 120.75 121.15 126.9 132.7 348.0 (CENTER) PRM 119.625	GND CON (TWR NORTH) 124.125 (TWR SOUTH) 118.05 (ALL TWRs) 226.675	(TWR CENTER) 121.75 (OBND) (IBND) 121.9
--	---	---	--	--

CLNC DEL 121.6	CPDLC
--------------------------	-------

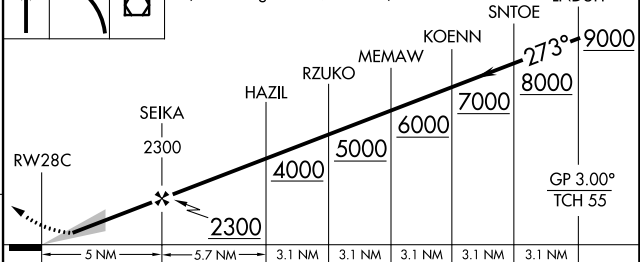
RADAR REQUIRED



ELEV 680	D	TDZE 651
-----------------	----------	-----------------



VGSi and RNAV glidepath not coincident (VGSi Angle 3.00/TCH 80).



CATEGORY	A	B	C	D
LPV DA		851/18	200 (200-½)	
LNAV/VNAV DA		1094/50	443 (500-1)	

EC-3, 31 JAN 2019 to 28 FEB 2019

EC-3, 31 JAN 2019 to 28 FEB 2019