

RNAV (GPS) PRM Y RWY 10R

(CLOSE PARALLEL)

CHICAGO-O'HARE INTL (ORD)

WAAS CH 77937 W10D	APP CRS 090°	Rwy Idg TDZE Apt Elev	7500 680 680
--	------------------------	-----------------------------	---

⚠ DME/DME RNP-0.3 NA. Simultaneous approach authorized. Dual VHF comm required. See additional requirements on AAUP. For uncompensated Baro-VNAV systems, LNAV/VNAV NA below -19°C (-2°F) or above 54°C (130°F). Use of FD or AP providing RNAV track guidance required during simultaneous operations. Inop table does not apply to LPV all Cats. Rwy 10R helicopter visibility reduction below 3/4 SM NA.

ALSF-2



MISSED APPROACH: Climb to 1200 then climbing right turn to 4000 direct DPA VOR/DME and hold.

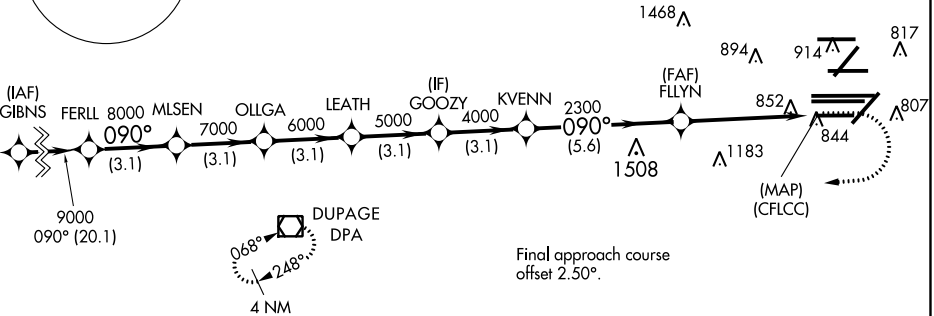
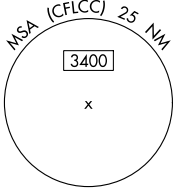
D-ATIS 135.4	CHICAGO APP CON 119.0 292.125
------------------------	---

O'HARE TOWERS			
128.15	348.0 (Rwy 9L/27R)	133.0	348.0 (10R/28L)
120.75	121.15	126.9	132.7
PRM 128.05			

GND CON (TWR CENTER)	124.125	(TWR NORTH)	121.75	(OBND)
(TWR SOUTH)	118.05	(IBND)	121.9	
226.675 (ALL TWR)				

CLNC DEL	121.6
----------	--------------

CPDLC

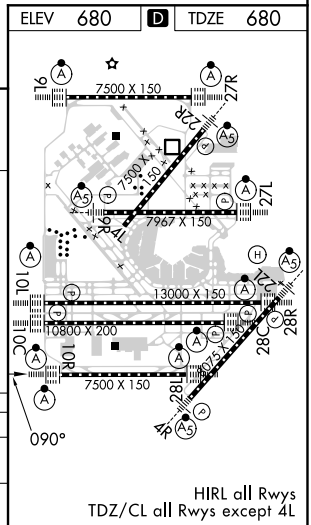


EC-3, 31 JAN 2019 to 28 FEB 2019

EC-3, 31 JAN 2019 to 28 FEB 2019

RADAR REQUIRED

		1200	4000	DPA				
	FERLL	MLSEN	OLLGA	LEATH	GOOZY	KVENN	FLLYN	(CFLCC)
	9000	8000	7000	6000	5000	4000	2300	
	GP 3.00							
	TCH 55							
	3.1 NM	3.1 NM	3.1 NM	3.1 NM	3.1 NM	5.6 NM	4.9 NM	
CATEGORY	A	B	C	D				
LPV	DA	930-3/4		250 (300-3/4)				
LNAV/VNAV	DA	1157-1 1/8		477 (500-1 1/8)				



RNAV (GPS) PRM Y RWY 10R (CLOSE PARALLEL)