

CHICAGO, ILLINOIS

AL-166 (FAA) **RNAV (GPS) PRM Y RWY 28L**

(CLOSE PARALLEL)

CHICAGO O'HARE INTL (ORD)

|  |                        |                             |   |
|--|------------------------|-----------------------------|---|
| WAAS<br>CH <b>93839</b><br><b>W28E</b> | APP CRS<br><b>275°</b> | Rwy Idg<br>TDZE<br>Apt Elev | <b>7500</b><br><b>667</b><br><b>680</b> |
|--|------------------------|-----------------------------|---|

RNP APCH. RADAR required.

▼ For uncompensated Baro-VNAV systems, LNAV/VNAV NA below -19°C or above 54°C. Simultaneous approach authorized. Use of FD or AP required during simultaneous operations. Dual VHF comm required. See additional requirements on AAPP.

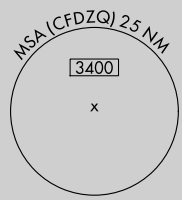
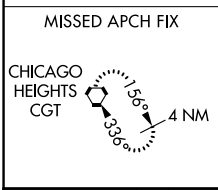
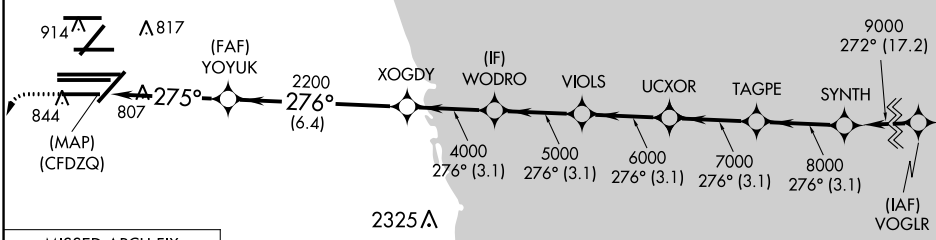
ALSf-2

MISSED APPROACH: Climb to 1200 then climbing left turn to 4000 direct CGT VORTAC and hold.

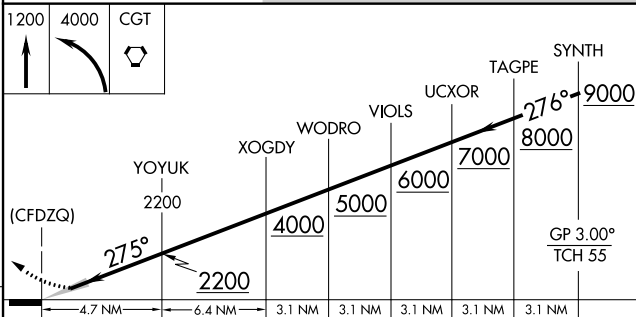
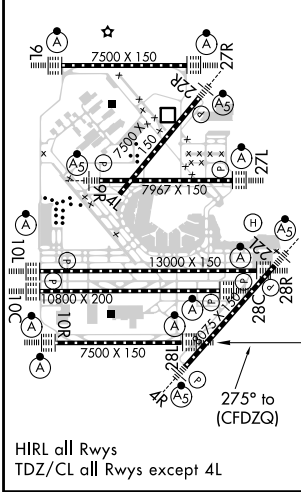
|  |   |  |   |
|--|---|--|---|
| D-ATIS<br><b>135.4</b><br><b>282.225</b> | CHICAGO APP CON<br><b>119.0 292.125</b> | O'HARE TOWERS<br><b>128.15 348.0</b> (Rwy 9L/27R) <b>133.0 348.0</b> (10R/28L) <b>120.75 121.15 126.9 132.7 348.0</b> (CENTER) | GND CON (TWR CENTER)<br><b>124.125</b> (TWR NORTH) <b>121.75</b> (OBND)<br><b>118.05</b> (TWR SOUTH) <b>121.9</b> (IBND)<br><b>226.675</b> (ALL TWRS) |
|--|---|--|---|

|                          |       |
|--------------------------|-------|
| CLNC DEL<br><b>121.6</b> | CPDLC |
|--------------------------|-------|

Final approach course offset 2.50°.



|                 |          |                 |
|-----------------|----------|-----------------|
| ELEV <b>680</b> | <b>D</b> | TDZE <b>667</b> |
|-----------------|----------|-----------------|



|              |   |         |             |   |
|--------------|---|---------|-------------|---|
| CATEGORY     | A | B       | C           | D |
| LPV DA       |   | 917/24  | 250 (300-½) |   |
| LNAV/VNAV DA |   | 1090/40 | 423 (500-¾) |   |

CHICAGO, ILLINOIS  
Orig-A 13SEP18

41°58'N-87°54'W

CHICAGO O'HARE INTL (ORD)

**RNAV (GPS) PRM Y RWY 28L (CLOSE PARALLEL)**

EC-3, 31 JAN 2019 to 28 FEB 2019

EC-3, 31 JAN 2019 to 28 FEB 2019