

WAAS CH <b>77937</b> <b>W10D</b>	APP CRS <b>090°</b>	Rwy Idg TDZE Apt Elev	<b>7500</b> <b>680</b> <b>680</b>
--	------------------------	-----------------------------	---

# RNAV (GPS) Y RWY 10R

CHICAGO-O'HARE INTL (ORD)

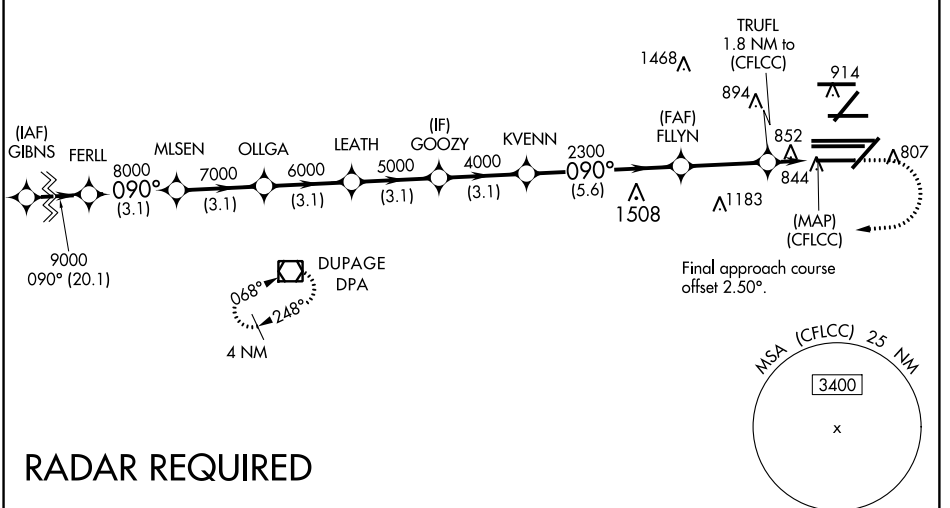
**▼** DME/DME RNP-0.3 NA. Simultaneous approach authorized. For uncompensated Baro-VNAV systems, LNAV/VNAV NA below -19°C (-2°F) or above 54°C (130°F). LNAV procedure NA during simultaneous operations. Use of FD or AP providing RNAV track guidance required during simultaneous operations. Inop table does not apply to LPV all Cats. For inop ALS, increase LNAV Cat A and B visibility to 1 SM. Rwy 10R helicopter visibility reduction below ¾ SM NA.

**ALSF-2**

**MISSED APPROACH:**  
Climb to 1200 then climbing right turn to 4000 direct PPA VOR/DME and hold.

D-ATIS <b>135.4</b> <b>282.225</b>	CHICAGO APP CON <b>119.0 292.125</b>	O'HARE TOWERS <b>128.15 348.0</b> (Rwy 9L/27R) <b>133.0 348.0</b> (10R/28L) <b>120.75 121.15 126.9 132.7 348.0</b> (CENTER)				GND CON (TWR NORTH) <b>124.125</b> (TWR SOUTH) <b>118.05</b> (ALL TWRs) <b>226.675</b>	(TWR CENTER) <b>121.75</b> (OBND) (TWR INBD) <b>121.9</b>
--	---	--	--	--	--	--	--

CLNC DEL <b>121.6</b>	CPDLC
--------------------------	-------

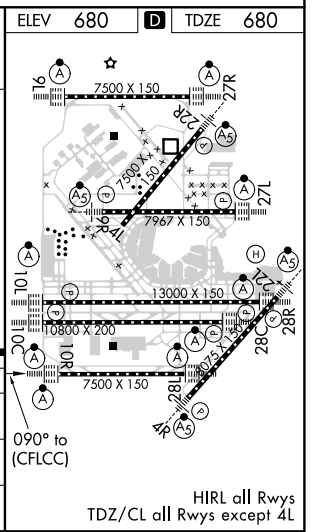


**RADAR REQUIRED**

EC-3, 31 JAN 2019 to 28 FEB 2019

EC-3, 31 JAN 2019 to 28 FEB 2019

ELEV 680		D TDZE 680	
*LNAV only.			
GP 3.00 TCH 55	9000	8000	7000
	3.1 NM	3.1 NM	3.1 NM
	3.1 NM	3.1 NM	3.1 NM
	3.1 NM	3.1 NM	3.1 NM
	3.1 NM	3.1 NM	3.1 NM
	3.1 NM	3.1 NM	3.1 NM
	5.6 NM	3.1 NM	0.6 NM
	1.2 NM	0.6 NM	1.2 NM
CATEGORY	A	B	C
LPV DA		930-¾	250 (300-¾)
LNAV/VNAV DA		1157-1⅛	477 (500-1⅛)
LNAV MDA		1120-¾	440 (500-¾)



HIRL all Rwy's  
TDZ/CL all Rwy's except 4L