

WAAS CH <b>93839</b> <b>W28E</b>	APP CRS <b>275°</b>	Rwy ldg TDZE Apt Elev	<b>7500</b> <b>667</b> <b>680</b>
--	------------------------	-----------------------------	---

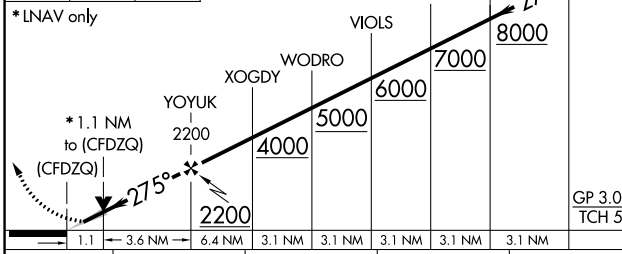
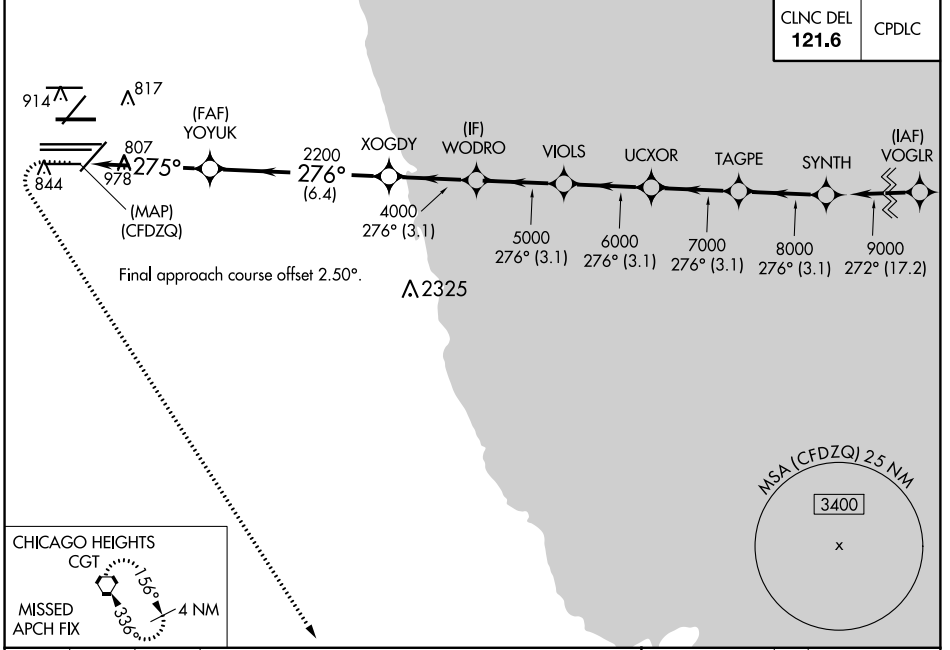
# RNAV (GPS) Y RWY 28L

CHICAGO-O'HARE INTL (ORD)

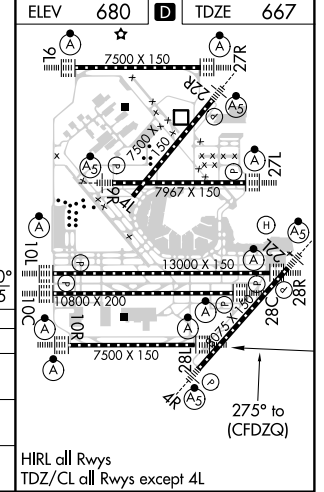
RNP APCH:  
 Simultaneous approach authorized. LNAV procedure NA during simultaneous operations. For uncompensated Baro-VNAV systems, LNAV/VNAV NA below -19°C or above 54°C. Use of FD or AP required during simultaneous operations.

ALSF-2  
 MISSED APPROACH: Climb to 1200 then climbing left turn to 4000 direct CGT VORTAC and hold.

D-ATIS <b>135.4</b> <b>282.225</b>	CHICAGO APP CON <b>119.0 292.125</b>	O'HARE TOWERS <b>128.15 348.0</b> (Rwy 9L/27R) <b>133.0 348.0</b> (10R/28L) <b>120.75 121.15 126.9 132.7 348.0</b> (CENTER)		GND CON (TWR CENTER) <b>124.125</b> (TWR NORTH) <b>121.75</b> (OBND) <b>118.05</b> (TWR SOUTH) <b>121.9</b> (IBND) <b>226.675</b> (ALL TWRs)
--	---	--	--	---



CATEGORY	A	B	C	D
LPV DA	917/24		250 (300-½)	
LNAV/VNAV DA	1090/40		423 (500-¾)	
LNAV MDA	1060/24 393 (400-½)		1060/35 393 (400-⅝)	



EC-3, 31 JAN 2019 to 28 FEB 2019

EC-3, 31 JAN 2019 to 28 FEB 2019