

WAAS CH 77804 W27A	APP CRS 273°	Rwy Idg TDZE Apt Elev	7782 654 680
--	------------------------	-----------------------------	---

RNAV (GPS) Z RWY 27L

CHICAGO O'HARE INTL (ORD)

▼ For uncompensated Baro-VNAV systems, LNAV/VNAV NA below -19°C (-2°F) or above 54°C (130°F). Simultaneous approach authorized. DME/DME RNP-0.3 NA. LNAV procedure NA during simultaneous operations. Use of FD or AP providing RNAV track guidance required during simultaneous operations. For inop ALSF-2, increase LNAV Cat C/D visibility to 1½ mile.

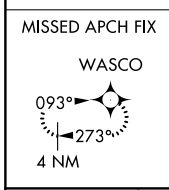
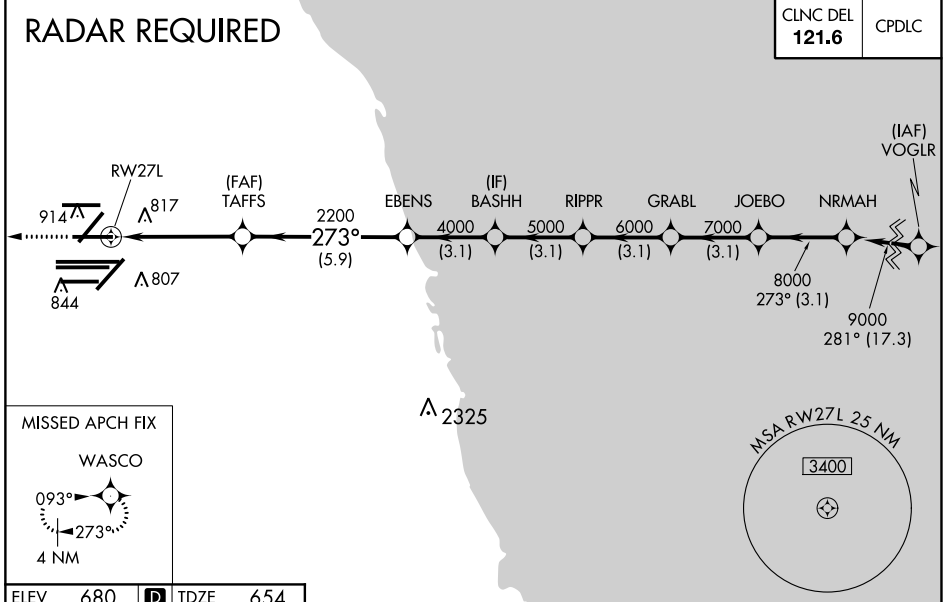
ALSF-2

MISSED APPROACH:
Climb to 4000 direct WASCO and hold.

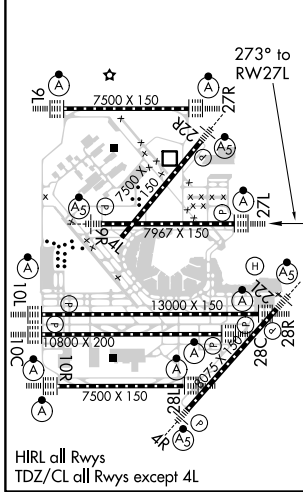
D-ATIS 135.4	CHICAGO APP CON 119.0 292-125	O'HARE TOWERS 128.15 348.0 (Rwy 9L/27R) 133.0 348.0 (10R/28L) 120.75 121.15 126.9 132.7 348.0 (CENTER)	GND CON (TWR NORTH) 124.125 (TWR SOUTH) 118.05 (ALL TWRs) 226.675	(TWR CENTER) 121.75 (OBND) (IBND) 121.9
------------------------	---	--	--	--

RADAR REQUIRED

CLNC DEL 121.6	CPDLC
--------------------------	-------



ELEV 680	D	TDZE 654
----------	----------	----------



4000	WASCO	VGSI and RNAV glidepath not coincident (VGSI Angle 3.00/TCH 67).	NRMAH
*LNAV only.			
RWY 27L	TAFSS	EBENS	BASHH
2200	2200	4000	5000
1.3 NM	3.4 NM	5.9 NM	3.1 NM
GRABL	RIPPR	JOEBO	NRMAH
7000	6000	8000	9000
3.1 NM	3.1 NM	3.1 NM	3.1 NM
GP 3.00°	TCH 55		
CATEGORY	A	B	C
LPV DA	854/18 200 (200-½)		
LNAV/VNAV DA	1125/60 471 (500-¼)		
LNAV MDA	1120/24	466 (500-½)	1120/50 466 (500-1)

EC-3, 31 JAN 2019 to 28 FEB 2019

EC-3, 31 JAN 2019 to 28 FEB 2019